



## SEM TRAINERS & SYSTEMS

WHERE TIME MOVES AHEAD TO KEEP PACE WITH KNOWLEDGE

SEM- Scientific Educative Methods in Science, Engineering & Medicine

**Mobile :** +91 88495 63724  
**Mobile 1:** +91 98791 03905

**Email:** sem@semtrainers.com  
**Website:** www.semtrainers.com



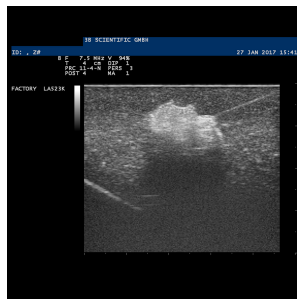
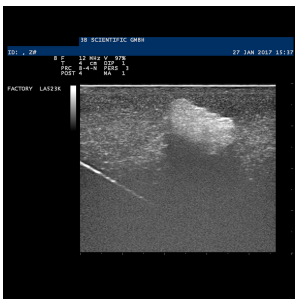
## SONO

Item No. 1019635 [P125]  
Weight 2kg  
Dimensions 36 x 36 x 12.5 cm  
Brand 3B Scientific

[Read More](#)

**SKU:**

**Categories:**Ultrasound



## Product Description

Realistic reproduction of a breast made from ultrasound material with three tumours for realistic punctures and biopsies. • Easy to use • Cost effective • Realistic echogenicity The material of the SONOtrain™ trainer simulates the feel of real soft tissue for carrying out palpations and injections and shows realistic texture and echogenicity on ultrasound images. The SONOtrain™ trainer is an excellent teaching tool for basic training and for improving dexterity and hand-eye coordination skills. Please note: an ultrasound device is not part of the delivery content.

Why Choose the 3B Scientific® SONOtrain™ Breast Model with Tumours (1019635 / P125) for Your Simulation Lab in India?

The SONOtrain™ Breast Model with Tumours (Item No. 1019635 [P125]) by 3B Scientific® is a compact ultrasound breast phantom with three embedded tumour simulants designed for ultrasound-guided puncture and biopsy training. For radiology, breast surgery, oncology, and general surgery training programmes, nursing colleges, and clinical skills labs in India that need to train ultrasound-guided breast biopsy technique — or to develop basic probe handling, image interpretation, and hand-eye coordination on a breast phantom — this model provides a cost-effective, ready-to-use platform compatible with any ultrasound machine.

The model is fabricated from SONOtrain™ material, a formulation developed by 3B Scientific® to replicate the soft tissue feel of the human breast under palpation and needle insertion while producing realistic echogenicity on standard ultrasound images. Trainees can palpate the breast surface to identify the tumour locations before confirming and targeting them under ultrasound — practising the same sequence used in clinical breast examination and image-guided biopsy. The three embedded tumours each produce echogenic responses that allow trainees to distinguish mass morphology and develop the probe orientation and needle-tracking skills required for accurate fine needle aspiration or core biopsy procedures. An ultrasound device is not included and must be provided separately.

Why Buy from SEM Trainers?

SEM Trainers & Systems is an authorized distributor of 3B Scientific products in India with over 30 years of experience supplying medical simulators to 1,500+ institutions across 28 states. We provide pan-India delivery, on-site installation, faculty orientation, and dedicated after-sales support.

Q: How many tumours are in this model? A: Three tumours are embedded in the breast phantom.

Q: Does this model work with any ultrasound machine? A: Yes. The SONOtrain™ material produces realistic echogenicity on standard ultrasound equipment. An ultrasound machine is not included and

must be provided separately.

Q: Can palpation as well as ultrasound be used to locate the tumours? A: Yes. The material simulates the feel of real soft tissue, allowing trainees to practise palpation-based tumour detection before confirming with ultrasound — mirroring the clinical sequence.

Q: Is this model suitable for needle puncture and biopsy practice? A: Yes. The model is designed specifically for ultrasound-guided puncture and biopsy training on all three embedded tumours.