



SEM TRAINERS & SYSTEMS

WHERE TIME MOVES AHEAD TO KEEP PACE WITH KNOWLEDGE

SEM- Scientific Educative Methods in Science, Engineering & Medicine

Mobile : +91 88495 63724
Mobile 1: +91 98791 03905

Email: sem@semtrainers.com
Website: www.semtrainers.com



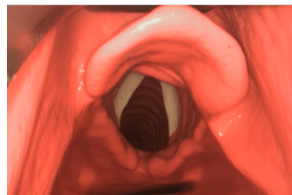
AirSim

Item No. AA11100
Weight Approx. 3kg
Make: TruCorp, Ireland

[Read More](#)

SKU:

Categories: Airway Management Adult



Product Description

Our AirSim® model is ideal for training in airway management and awake fiberoptic intubation. It features the uniquely constructed AirSim® airway for realistic feedback during airway management procedures. Visually and anatomically correct, the nasal cavity and airway include important internal landmarks for training in nasotracheal intubation and nasally directed fiber optic examination.

Model Features

- Anatomically correct internal features and visually accurate landmarks in airway & nasal cavity created from CT DICOM data
- Inflatable tongue with lifelike texture can simulate edema

- Replaceable lung bags inflate with successful ventilation
- Esophagus and replaceable bag representing stomach

Medical Procedure Training

- Single nasotracheal intubation
- Full range of supraglottic device insertion
- Direct laryngoscopy
- Fibre optic intubation & examination
- Endotracheal tube insertion
- Combi tube insertion
- Nasogastric (NG) tube insertion techniques
- Single lung isolation techniques

Airway Management Trainer Head for Intubation & Examination Practice

The AirSim nasal passage was developed to provide an anatomically correct nasal cavity including important landmarks such as the turbinates for a realistic training experience in nasal intubation procedures. True to life neck tilt, jaw thrust and chin facilitate practice in bag-valve-mask ventilation techniques.

ENDOTRACHEAL, OROTRACHEAL & NASOTRACHEAL INTUBATION TRAINING

The TruCorp AirSim intubation head is ideal for practicing Combi tube insertion, nasogastric tube insertion and the full range of supraglottic device insertion including nasopharyngeal and oropharyngeal airways. The AirSim airway trainer is compatible with a full range of supraglottic devices. We recommend following the equipment sizes as per the [product user manual](#) for optimal performance. In addition to our airway manikins, we also offer:

- A vascular access training model
- A patient monitor simulator app
- Medical manikins for clinical skills training

TruCorp products are ideal for students as well as healthcare professionals in continuing medical education programs.

DURABLE AIRWAY TRAINER FOR TEACHING

This model withstands continuous and repeated use in medical procedure training, making it ideal for a classroom setting, and as an airway demonstration model for device manufacturers and

educators.

Package Contents

- 1 [Carrier case](#)
- 1 Bottle of [TruCorp lubrication](#)
- 3 [Adult lung bags](#) replicating 2 lungs & stomach
- 2 sets of adhesive pads (attachable to suction cups for increased stability if required)

Parts & Accessories

- [Base plinth](#)
- [Neck locks](#)
- [Suction cup \(Set of 8\)](#)