



SEM TRAINERS & SYSTEMS

WHERE TIME MOVES AHEAD TO KEEP PACE WITH KNOWLEDGE

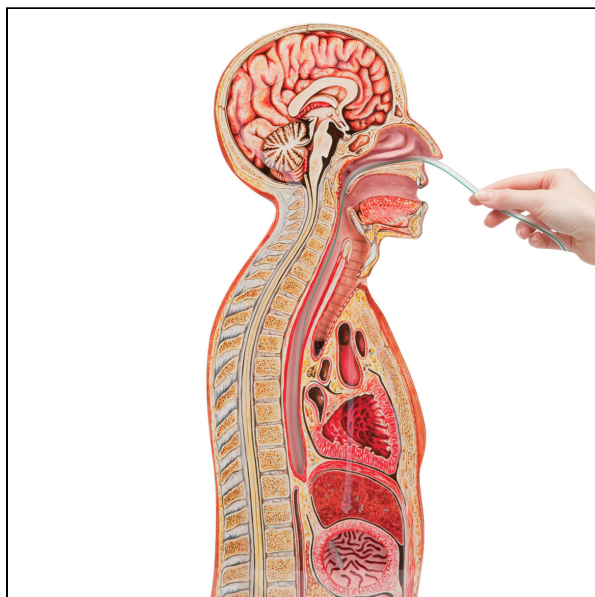
SEM- Scientific Educative Methods in Science, Engineering & Medicine

Mobile : +91 88495 63724

Mobile 1: +91 98791 03905

Email: sem@semtrainers.com

Website: www.semtrainers.com



Nasogastric Intubation Model

Item No. 1005568 [W43020]

Weight 3.396kg

Dimensions 58.5 x 30.5 x 8 cm

Brand WRS Group

MPN: 84087

[Read More](#)

SKU:

Categories:Airway Management Adult

Product Description

This instructional model shows a median section through nose, mouth, pharynx, trachea, esophagus and stomach. Plastic feeding tubes or catheters may be passed through the nose or mouth into the esophagus and stomach. A tracheostoma has been added to demonstrate endotracheal aspiration. Why Choose the Nasogastric Intubation Model for Your Simulation Lab in India? The Nasogastric Intubation Model from 3B Scientific is a trusted training tool used across simulation labs in India for hands-on nasogastric tube insertion practice. This simulator helps medical students and healthcare professionals build critical competencies in a safe, controlled environment — fully aligned with NMC's Competency-Based Medical Education (CBME) guidelines for mandatory clinical skills training. Who Is This Simulator Ideal For? This product is recommended for medical colleges setting up OSCE stations, nursing institutions, and hospitals building clinical skills laboratories as per NMC guidelines. Whether you are setting up a new simulation lab or upgrading your existing facility, the Nasogastric Intubation Model offers an excellent balance of realism, durability, and training value. Why Buy from SEM

Trainers? SEM Trainers is a leading supplier of medical manikins and simulators across India. Authorized 3B Scientific distributor in India. We provide complete support including pan-India delivery, on-site installation, faculty training workshops, and prompt after-sales maintenance. All our products carry genuine manufacturer warranty and meet ISO 9001 quality standards. Frequently Asked Questions Q: Is the Nasogastric Intubation Model compliant with NMC simulation lab requirements? A: Yes, this simulator supports the skill-based training competencies specified under NMC's CBME framework for Indian medical and nursing institutions. Q: Does SEM Trainers provide installation and training support? A: Absolutely. We offer on-site installation, hands-on demo sessions, and faculty orientation workshops for every product delivered, anywhere in India. Q: What is the warranty and how do I get support? A: All products come with standard manufacturer warranty. For support, reach us at sem@semtrainers.com or call +91-88495 63724.