



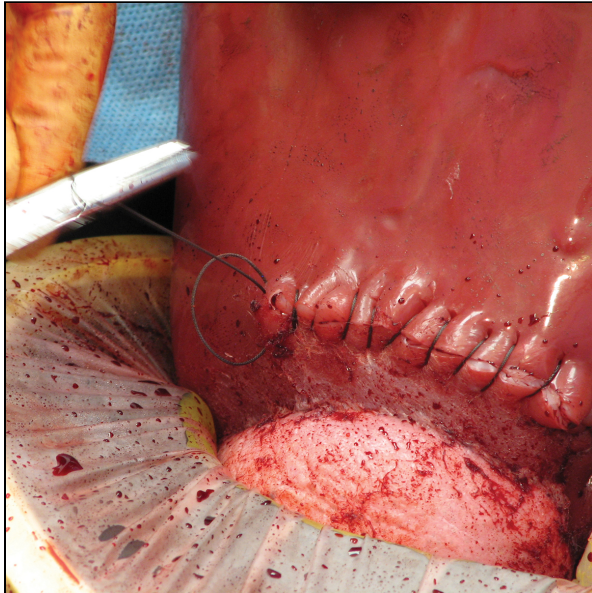
SEM TRAINERS & SYSTEMS

WHERE TIME MOVES AHEAD TO KEEP PACE WITH KNOWLEDGE

SEM- Scientific Educative Methods in Science, Engineering & Medicine

Mobile : +91 88495 63724
Mobile 1: +91 98791 03905

Email: sem@semtrainers.com
Website: www.semtrainers.com



Emergency C-Section & Delivery Trainer – C-Celia

Item No. 1022567
Weight 58.9kg
Dimensions 60 x 50 x 27 cm
Brand Operative Experience Inc.
MPN: OB-300-2000
Previous Item No. 1021391

[Read More](#)

SKU:

Categories:Gynecology

Product Description

Extremely realistic obstetric simulator for emergency Cesarean deliveries Each simulator supports multiple difficult Cesarean deliveries with **realistic incisions and amniotic fluid**. With the C-Celia – Emergency C-Section Delivery Simulator, you can teach and train the complete scenario from the first incision to fetal extraction and afterbirth all the way to uterus repair and closing of the abdominal skin. The material used in the simulator gives the trainee a **life-like experience** (no hard plastics), is very durable and easy to clean.

- Pregnant abdomen simulator enables **full transverse** (Pfannenstiel incision) or **vertical emergency C-section** (running from the umbilicus to the symphysis pubis)
- Perform **Cesarean section with incisions** through abdominal wall, muscle, fascia, linea alba,

uterus and amniotic sack

- Train **emergency fetal extraction** and clinical protocol procedures
- Practice C-section tissue **repair and suturing techniques** with life-like soft tissue
- **Realistic anatomy** enables hands-in-the-body simulation

Difficult fetal presentations can be manually positioned by the instructor to simulate the fetal extraction scenario that needs to be trained by the obstetricians and the medical team. Once the need for a C-section has been established, the medical team needs to work together fast and seamlessly. With realistic obstetric simulation, the team can practice medical procedures and clinical protocols for emergency C-sections, and learn how to work together effectively. **Delivery content:**

- Pregnant abdomen emergency C-section simulator
- 2 uteri
- 1 set of twin babies
- Repair kit: amniotic delivery sack, adhesive to allow each uterus to be repaired and reused 5 times (allows 10 total uses)
- 5 abdominal inserts
- Lubricant gel

C-Celia Feature Comparison: The following guide gives you an overview of C-Celia’s obstetric simulation features for difficult Cesarean deliveries.

| <u>C-Celia: Complete Obstetric Training System for Cesarean Deliveries</u> | | | | |
|--|---|---|--|--|
| | <u>Obstetric Simulator for Complete Cesarean Delivery 1022567</u> | <u>Obstetric Simulator for Fetal Extractions at Cesarean Deliveries 1022559</u> | <u>Obstetric Simulator for Postpartum Hemorrhage (PPH) Control 1022561</u> | <u>Obstetric Simulator for Cesarean Emergency Hysterectomy 1022564</u> |
| C-section delivery stage: | Pregnant abdomen, pre C-section | Open abdomen with transverse Cesarean incision | Open, post C-section delivery abdomen | Open, post C-section delivery abdomen |

| | | | | |
|---|---|---|--|---|
| <p>Cesarean delivery skills trained:</p> | <p>Emergency Cesarean delivery with:</p> <ul style="list-style-type: none"> • Full transverse (Pfannenstiel incision) C-section • Vertical emergency C-section (running from the umbilicus to the symphysis pubis) <p>C-Section through abdominal wall and uterus with incisions through:</p> <ul style="list-style-type: none"> • Abdominal wall • Muscle • Fascia • Linea alba • Uterus • Amniotic sack | <p>Difficult Cesarean delivery maneuvers:</p> <ul style="list-style-type: none"> • Manual delivery utilizing fundal pressure • Vacuum assisted extraction • Forceps extraction | <ul style="list-style-type: none"> • Management of Postpartum Hemorrhage (PPH) after Cesarean delivery • Repair of complex lacerations and uterine artery injuries • Supports PPH control techniques like Bakri Balloon, B-Lynch suture, Hayman suture and O-Leary Stitch • Surgical PPH control: Compressive uterine sutures, uterine artery ligation, hypogastric artery ligation • Non-surgical PPH control: uterine fundal massage, bimanual uterine massage, uterine packing, uterine tamponade, external aortic compression | <p>Postpartum and Caesarean hysterectomy:</p> <ul style="list-style-type: none"> • Hemorrhage control • Clamping and cutting of uterine art • Fully operable removal of uterus |
| <p>Obstetric simulator features:</p> | <ul style="list-style-type: none"> • Includes twin babies (with umbilical cord and placenta) • Simulated amniotic fluid | <ul style="list-style-type: none"> • Includes twin babies (with umbilical cord and placenta) | <ul style="list-style-type: none"> • Integrated pressurized bleeding and lubrication system | <ul style="list-style-type: none"> • Contains uterus, bladder, ureters and detailed representation of uterine arteries |

Why Choose the Emergency C-Section Delivery Trainer C-Celia for Your Simulation Lab in India? The Emergency C-Section Delivery Trainer C-Celia from 3B Scientific is a trusted training tool used across simulation labs in India for hands-on emergency cesarean delivery practice. This simulator helps medical students and healthcare professionals build critical competencies in a safe, controlled environment — fully aligned with NMC's CBME curriculum for obstetrics and gynecology practical

training. Who Is This Simulator Ideal For? This product is recommended for obstetrics and gynecology departments, nursing colleges with midwifery programs, and government hospitals mandated to provide EmOC (Emergency Obstetric Care) training. Whether you are setting up a new simulation lab or upgrading your existing facility, the Emergency C-Section Delivery Trainer C-Celia offers an excellent balance of realism, durability, and training value. Why Buy from SEM Trainers? SEM Trainers is a leading supplier of medical manikins and simulators across India. Authorized 3B Scientific distributor in India. We provide complete support including pan-India delivery, on-site installation, faculty training workshops, and prompt after-sales maintenance. All our products carry genuine manufacturer warranty and meet ISO 9001 quality standards. Frequently Asked Questions Q: Is the Emergency C-Section Delivery Trainer C-Celia compliant with NMC simulation lab requirements? A: Yes, this simulator supports the skill-based training competencies specified under NMC's CBME framework for Indian medical and nursing institutions. Q: Does SEM Trainers provide installation and training support? A: Absolutely. We offer on-site installation, hands-on demo sessions, and faculty orientation workshops for every product delivered, anywhere in India. Q: What is the warranty and how do I get support? A: All products come with standard manufacturer warranty. For support, reach us at sem@semtrainers.com or call +91-88495 63724.