



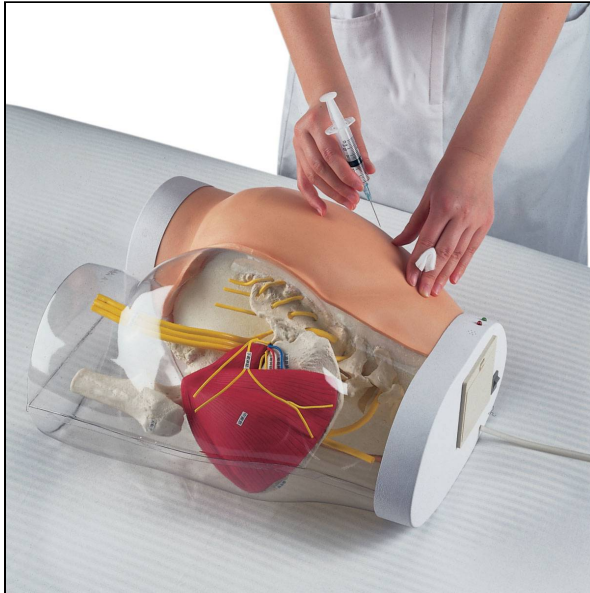
## SEM TRAINERS & SYSTEMS

WHERE TIME MOVES AHEAD TO KEEP PACE WITH KNOWLEDGE

SEM- Scientific Educative Methods in Science, Engineering & Medicine

**Mobile :** +91 88495 63724  
**Mobile 1:** +91 98791 03905

**Email:** sem@semtrainers.com  
**Website:** www.semtrainers.com



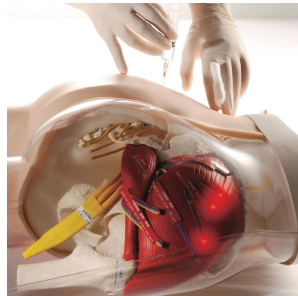
## Two-in-One i.m. Injection Model of Buttock

Item No. 1005394 [W30503]  
Weight 6.799 kg  
Dimensions 38 x 35 x 22 cm  
MPN: M152

[Read More](#)

**SKU:**

**Categories:** Intramuscular (I.m.) and Intradermal



### Product Description

This unique model of a human buttock has a special two-in-one function: On the right hand side, the anatomy of the bones, ilium crista, greater trochanter, m. gluteus medius, nerves and veins can be studied through the transparent outer structure. The student can transfer what he has learned about the position of nerves, veins etc. to the left hand side on which intra-muscular injections can be practiced. Anatomical landmarks can be palpated through the soft skin to identify the correct positions for injection. The injection of fluid (water) is possible. Correct injections are confirmed by a green light,

if the injection is placed in a wrong position or too deep, a red light will appear and a buzzer will sound.

	<b>Intramuscular Injection Simulator - Upper Arm</b>	<b>Intramuscular Injection Simulator - Upper Leg</b>	<b>Buttock Injection Simulator</b>	<b>Intramuscular injection simulator</b>	<b>Intramuscular Injection Model of Buttocks</b>	<b>Intramuscular Injection Simulator</b>	<b>Intradermal Injection Simulator</b>
<b>Item No.</b>	<a href="#">1009840</a>	<a href="#">1000511</a>	<a href="#">1000514</a>	<a href="#">1010008</a>	<a href="#">1005394</a>	<a href="#">1005586</a>	<a href="#">1005628</a>
<b>Body part</b>	upper arm	upper leg	buttock	muscle extract with skin	pelvis with buttocks	lower torso	forearm
<b>Palpable anatomical landmarks</b>	Yes	Yes	Yes	-	Yes	Yes	-
<b>Injection type</b>	intramuscular	intramuscular	intramuscular	intramuscular	intramuscular	intramuscular	intradermal
<b>Injection sites</b>	as indicated by a trainer	as indicated by a trainer	as indicated by a trainer	all the surface	as indicated by a trainer	as indicated by a trainer	eight
<b>Proper injection</b>	audiovisual feedback	audiovisual feedback	audiovisual feedback	-	green light will appear	-	skin welt will form
<b>Additional information</b>	training and test modes are available	training and test modes are available	training and test modes are available	will absorb fluid	special skin material does not show needle marks	simulated bony structure is embedded in the torso	liquid skin repair kit included (M-1013686)