



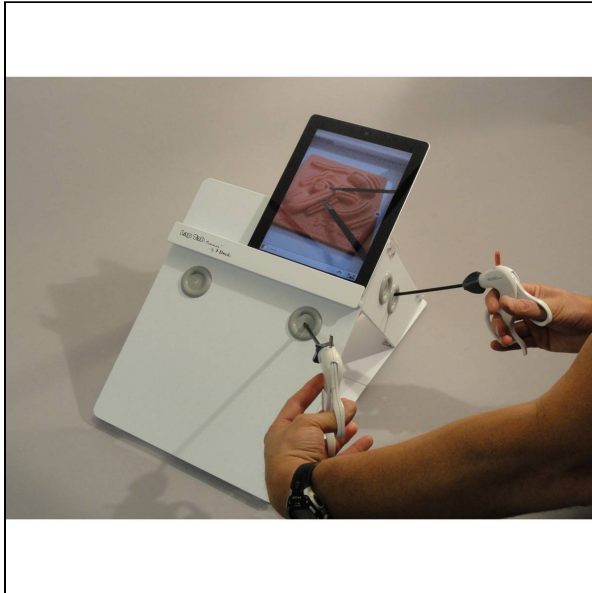
SEM TRAINERS & SYSTEMS

WHERE TIME MOVES AHEAD TO KEEP PACE WITH KNOWLEDGE

SEM- Scientific Educative Methods in Science, Engineering & Medicine

Mobile : +91 88495 63724
Mobile 1: +91 98791 03905

Email: sem@semtrainers.com
Website: www.semtrainers.com



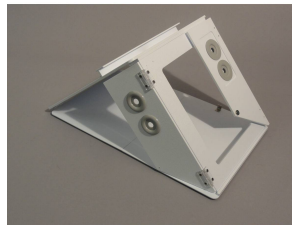
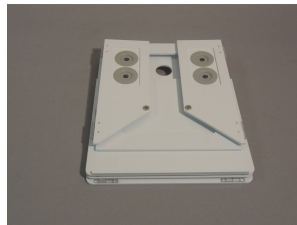
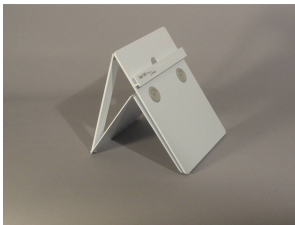
Lap Tab Trainer

Item No. 1018108 [W44901]
Weight 2.27kg
Dimensions 45.7 x 30.5 x 5.1 cm
Brand 3-Dmed
MPN: LTS-MH

[Read More](#)

SKU:

Categories:Laparoscopy



Product Description

Technology meets simplicity with the fold-up trainer with side ports that works with your iPad, iPhone, tablet, or smartphone. With all of the features of the Lap Tab trainer™ and the addition of side ports (one on each side), we have increased the versatility of the trainer. The Lap Tab trainer™ with Side Ports is ideal for residents to take home and practice. Being our most portable trainer yet, the Lap Tab trainer™ with Side Ports is small enough to fit into a backpack and is simple to set up. Why Choose the

Lap Tab Trainer for Your Simulation Lab in India? The Lap Tab Trainer is a trusted training tool used across simulation labs in India for hands-on laparoscopic training practice. This simulator helps medical students and healthcare professionals build critical competencies in a safe, controlled environment — fully aligned with NMC's CBME requirements for surgical skills training and competency assessment.

Who Is This Simulator Ideal For? This product is recommended for surgical skill labs, minimal access surgery training centers, and medical colleges offering hands-on laparoscopic and endoscopic training workshops. Whether you are setting up a new simulation lab or upgrading your existing facility, the Lap Tab Trainer offers an excellent balance of realism, durability, and training value.

Why Buy from SEM Trainers? SEM Trainers is a leading supplier of medical manikins and simulators across India. We provide complete support including pan-India delivery, on-site installation, faculty training workshops, and prompt after-sales maintenance. All our products carry genuine manufacturer warranty and meet ISO 9001 quality standards.

Frequently Asked Questions

Q: Is the Lap Tab Trainer compliant with NMC simulation lab requirements? A: Yes, this simulator supports the skill-based training competencies specified under NMC's CBME framework for Indian medical and nursing institutions.

Q: Does SEM Trainers provide installation and training support? A: Absolutely. We offer on-site installation, hands-on demo sessions, and faculty orientation workshops for every product delivered, anywhere in India.

Q: What is the warranty and how do I get support? A: All products come with standard manufacturer warranty. For support, reach us at sem@semtrainers.com or call +91-88495 63724.