



SEM TRAINERS & SYSTEMS

WHERE TIME MOVES AHEAD TO KEEP PACE WITH KNOWLEDGE

SEM- Scientific Educative Methods in Science, Engineering & Medicine

Mobile : +91 88495 63724
Mobile 1: +91 98791 03905

Email: sem@semtrainers.com
Website: www.semtrainers.com



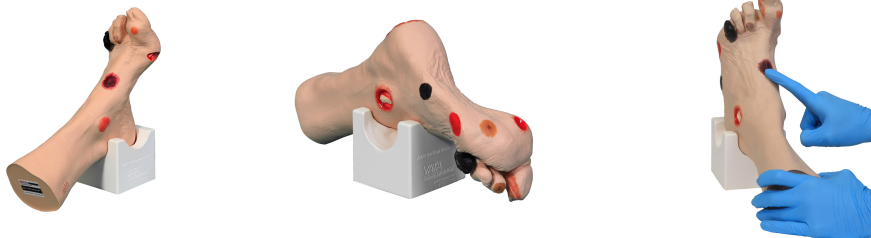
Wilma Wound Foot™

Item No. 1017978 [w46516]
Weight 1.81kg
Dimensions 21.6 x 10.2 x 22.9 cm
Brand VATA
MPN: 950

[Read More](#)

SKU:

Categories: Decubitus Care



Product Description

The newest and most comprehensive model of its kind, molded from an 80-year old patient for a true-to-life experience when assessing the various wounds. Twenty different conditions are presented on Wilma Wound Foot™ so you can see and understand how they are different. Great care has been

taken to color each wound just as you would see it on a patient. Once the different etiologies are understood, you can discuss and devise treatment plans that will deliver optimized patient care. Wound assessment has become critical as inaccurate wound assessment can misdirect the plan of care, affect reimbursement, cause inaccurate reporting of patient outcomes and the appearance of potential adverse events. This model is an effective tool for educating all healthcare professionals and patients in the identification and staging of wounds and their probable etiologies. Wilma Wound Foot™ is also an excellent visual aid for educating those who cannot read well enough to understand basic health care information, allowing them to see what can occur without proper care. Routine cleansing and dressing changes can be taught and practiced on all the wounds by healthcare providers, patients, families and caregivers. The model is made of flexible material permitting the toes to be moved for closer examination or the application of dressings. This unique material permits the application and removal of dressings without leaving an “adhesive residue”, when used according to supplied instructions. Each model is supplied with a positioning base for the foot which will give “hands free” access to all the sites when applying dressings or for teaching. An optional carrying case is also available. A great tool for training, competency testing, skills assessment and dressing techniques! The following wounds*, pressure ulcers* and foot abnormalities are presented on Wilma Wound Foot™ :

- Stage I pressure ulcer on the medial malleolus
- Stage II pressure ulcer on the lateral foot (behind the 5th toe)
- Stage III pressure ulcer on the heel with infection
- Stage IV pressure ulcer on the lateral malleolus with exposed tendon and bone (with osteomyelitis)
- Stage IV pressure ulcer on the medial foot (behind the great toe) with exposed tendon and slough
- Suspected DTI (Deep Tissue Injury) on top of foot with “mushy/boggy” feel when palpated
- Unstageable eschar on lateral foot * Full thickness ulcer, plantar, 1st digit, probable diabetic neuropathic etiology
- Callus under the 4th metatarsal phalangeal joint
- Amputated 2nd toe * Dry gangrene of the 5th toe, due to ischemia
- Interdigital maceration between the 4th and 5th toe
- Partial thickness wounds between 3rd and 4th toe at 1st joint
- Corn on top of 3rd toe
- Callus at tip of 3rd toe
- Ingrown toenail on the medial aspect of the great toe
- Fungal thickened toenail on the great toe
- Blister on great toe at the first joint
- Hammer toes - 3rd, 4th and 5th toes
- Skin stapled wound

Size: 12 1/2” X 8” X 3 5/8” Sh. wt. 4.0 lbs. Why Choose the Wilma Wound Foot for Your Simulation Lab in India? The Wilma Wound Foot from 3B Scientific is a trusted training tool used across simulation labs in India for hands-on wound care training practice. This simulator helps medical students and

healthcare professionals build critical competencies in a safe, controlled environment — fully aligned with Indian Nursing Council (INC) and NMC skill-lab requirements for nursing education programs. Who Is This Simulator Ideal For? This product is recommended for nursing colleges, BSc and GNM training institutions, hospital in-service training departments, and skill labs focusing on patient care competencies. Whether you are setting up a new simulation lab or upgrading your existing facility, the Wilma Wound Foot offers an excellent balance of realism, durability, and training value. Why Buy from SEM Trainers? SEM Trainers is a leading supplier of medical manikins and simulators across India. Authorized 3B Scientific distributor in India. We provide complete support including pan-India delivery, on-site installation, faculty training workshops, and prompt after-sales maintenance. All our products carry genuine manufacturer warranty and meet ISO 9001 quality standards. Frequently Asked Questions Q: Is the Wilma Wound Foot compliant with NMC simulation lab requirements? A: Yes, this simulator supports the skill-based training competencies specified under NMC's CBME framework for Indian medical and nursing institutions. Q: Does SEM Trainers provide installation and training support? A: Absolutely. We offer on-site installation, hands-on demo sessions, and faculty orientation workshops for every product delivered, anywhere in India. Q: What is the warranty and how do I get support? A: All products come with standard manufacturer warranty. For support, reach us at sem@semtrainers.com or call +91-88495 63724.