



SEM TRAINERS & SYSTEMS

WHERE TIME MOVES AHEAD TO KEEP PACE WITH KNOWLEDGE

SEM- Scientific Educative Methods in Science, Engineering & Medicine

Mobile : +91 88495 63724
Mobile 1: +91 98791 03905

Email: sem@semtrainers.com
Website: www.semtrainers.com



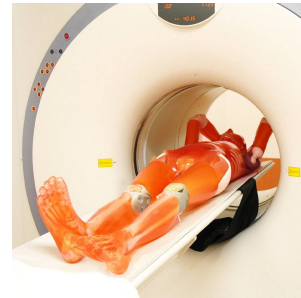
CT Whole Body Phantom "PBU-60"

Item No. PH-2B
Weight 50 kg
Brand KYOTO KAGAKU, JAPAN

[Read More](#)

SKU:

Categories: Radiology Phantom



Product Description

A unique, life size whole body phantom for CT provides a variety of educational application as well as visual evaluation in finding out optimal scanning conditions

Features

1. Radiology absorption and HU number approximate to human body.
2. Main joints have close-to human articulation
3. Phantom can be disassembled into 10 individual parts

Training skills / Applications

Set includes

Height (approx.)

Packing size (approx.)

Weight (approx.)

Packing weight (approx.)

Materials

Replacement parts

Optional parts

Related products

Publication references

Update

Plain X-ray / CT /Basic patient positioning

1 whole body phantom / 1 head supporter / 1 flat head screwdriver/ 1 set of samaple X-ray / manual

165 cm / 65in

W92 x D57 x H38cm, W37 x D23 x H15in / W90 x D63 x H22cm, W36 x D25 x H9in / W89 x D57 x H16cm, W35 x D23 x H6in

50 kg / 110 lb

80 kg / 176 lb

Soft tissue: urethane based resin (density: 1.06) Synthetic bone: epoxy resin (density: 1.31) Skull: spoxy resin (density: 1.11) *Phantom has no metal parts or liquid structure

41350-200-01 head for PH-2B / 41350-200-02 right hand for PH-2&2B / 45350-200-03 left hand PH-2&2B / 41350-200-04 right upper arm for PH-2&2B / 41350-200-05 left upper arm for PH2&2B / 41350-200-06 torso for PH2B / 41350-200-12 right thigh for PH2&2B /41350-200-13 left thigh for PH2&2B / 41350-200-14 right foot for PH2&2B / 41350-200-15 left foot for PH2&2B

41363-070 storage cases (consist of 2 boxes) / 41350-200-16 body plates for PH-2/2B (BMI 32) / 41350-200-17 body plates for PH-2/2B (BMI 40)

[PH-2D Bone Fracture Pediatric Phantom PBU-70B](#) [PH-2E CT Whole Body Phantom with Pathologies PH-60 Tough Whole Body Phantom "PBU-90 RUGGED"](#) [PH-2 Whole Boday Phantom "PBU-50"](#) [41350-000-11 Fractured Hand/Forearm Phantom for PH2/2B](#)

Kim, S., & Jung, H. (2013). A Study on Performance of Low-Dose Medical Radiation Shielding Fiber (RSF) in CT Scans. International Journal Of Technology, 4(2), 178-187. doi:10.14716/ijtech.v4i2.107

July 28, 2020