



SEM TRAINERS & SYSTEMS

WHERE TIME MOVES AHEAD TO KEEP PACE WITH KNOWLEDGE

SEM- Scientific Educative Methods in Science, Engineering & Medicine

Mobile : +91 88495 63724
Mobile 1: +91 98791 03905

Email: sem@semtrainers.com
Website: www.semtrainers.com



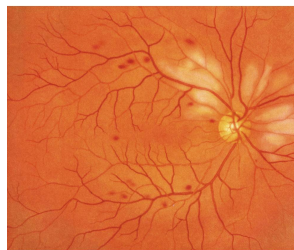
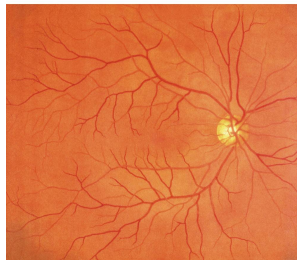
EYE Examination Simulator

Item No. M82
Weight 4 kg
Brand KYOTO KAGAKU, JAPAN

[Read More](#)

SKU:

Categories:EYE



Product Description

Practical fundus examination simulator with 10 clinical images and variations

Features

Training skills / Applications

Case / Pathology

Set includes

Size (approx.)

Packing size (approx.)

Weight (approx.)

Packing weight (approx.)

Materials

Replacement parts

Related products

Production ? Development Supervision

Update

Why Choose the Eye Examination Simulator for Your Simulation Lab in India? The Eye Examination Simulator is a trusted training tool used across simulation labs in India for hands-on ophthalmoscopy training practice. This simulator helps medical students and healthcare professionals build critical competencies in a safe, controlled environment — fully aligned with NMC's Competency-Based Medical Education (CBME) guidelines for mandatory clinical skills training. Who Is This Simulator Ideal

1. 10 fundus slide cases of common eye diseases 2. Real clinical images 3. Lenses are used for a part of the eyeball, and reproduces the visual axis close to human. 4. You can examine the optic fundus with any ophthalmoscope available on the market. Provides you with the simulation of an actual examination. 5. It is possible to change the degree of dilation and contraction of the pupil in 3 steps (2, 3.5, 5mm) offering different degrees of challenges. (*M82A is 2 steps; 3.5, 8mm) 6. The soft and supple material allows simulations of a real examination, in ways such as pulling up the eyelid.

Funds examination with direct ophthalmoscope

Normal fundus / Hypertensive retinopathy:-Grade 3 arteriolar vasoconstriction -Grade 1 arteriolosclerosis / -hemorrhages and cotton wool spots / -simple vein concealment / Diabetic retinopathy:microaneurysm, hemorrhages and hard exudates / Papilloedema (chronic phase) / Papilloedema (acute phase) / Glaucomatous optic atrophy:glaucomatous optic disc cupping and nerve fiber defect / Rerinal vein occlusion {acute phase) :flame-shaped hemorrhage and cotton wool spots / Rerinal vein occlusion (post rerinal laser photocoagulation) / Toxoplasmosis:retinochoroiditis / Age-related macular degeneration:macular exudates and subretinal hemorrhage / *M82A includes two normal fundus slides.

1 manikin head and shoulder with pupils 3steps (2,3.5,5 mm dia.) *M82 pulpils 2 steps (3.5,8mm dia.) *M82A 1 -1 slider holder with 3 steps depth setting / 1 slide duster / 1 set of case slides/ 1 storage case / 1 instruction manual

W42 x D22 x H39□ / W16.5 x D8.7 x H15.4in

M82:W49 x D29 x H53cm / W19 x D11 x H20in M82A:W48 x D27 x H36cm / W19 x D11 x H14in

2kg/4.4lbs

4kg/8lb

soft resin / hard resin / Latex is included in the blower

11220-010 1 replacement fundus case (set of 10 cases)

[MW12 EAR Examination Simulator II](#)

Japan Society for Medical Education Working Group with the cooperation of:Kansai Medical University Department of Ophthalmology

October 1, 2020

For? This product is recommended for medical colleges setting up OSCE stations, nursing institutions, and hospitals building clinical skills laboratories as per NMC guidelines. Whether you are setting up a new simulation lab or upgrading your existing facility, the Eye Examination Simulator offers an excellent balance of realism, durability, and training value. Why Buy from SEM Trainers? SEM Trainers is a leading supplier of medical manikins and simulators across India. We provide complete support including pan-India delivery, on-site installation, faculty training workshops, and prompt after-sales maintenance. All our products carry genuine manufacturer warranty and meet ISO 9001 quality standards. Frequently Asked Questions Q: Is the Eye Examination Simulator compliant with NMC simulation lab requirements? A: Yes, this simulator supports the skill-based training competencies specified under NMC's CBME framework for Indian medical and nursing institutions. Q: Does SEM Trainers provide installation and training support? A: Absolutely. We offer on-site installation, hands-on demo sessions, and faculty orientation workshops for every product delivered, anywhere in India. Q: What is the warranty and how do I get support? A: All products come with standard manufacturer warranty. For support, reach us at sem@semtrainers.com or call +91-88495 63724.