



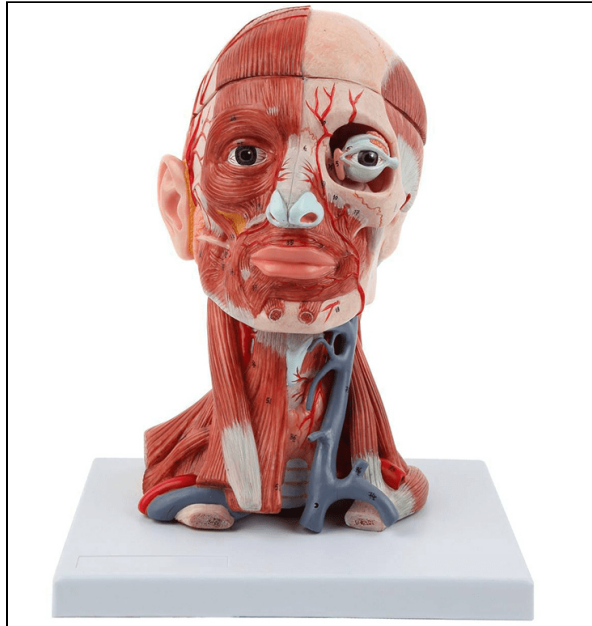
## SEM TRAINERS & SYSTEMS

WHERE TIME MOVES AHEAD TO KEEP PACE WITH KNOWLEDGE

SEM- Scientific Educative Methods in Science, Engineering & Medicine

**Mobile :** +91 88495 63724  
**Mobile 1:** +91 98791 03905

**Email:** sem@semtrainers.com  
**Website:** www.semtrainers.com



## Neck and Head Musculature Model, 10-Parts

Item No. MG34921  
Weight 9.9 lbs  
Make: Nasco Healthcare, USA

[Read More](#)

**SKU:**

**Categories:**Head Models

### Product Description

This anatomical model is made of resin and represents in detail the superficial and deep muscular anatomy of the head and neck, also showing nerves, bone and vascular parts. It is possible to dissect it into 10 parts: -Base of the head; -Skull; -Eye; -Sickle of the brain; -Right half of the brain; -Left half of the brain (4 parts); -Cervical vein. Removable from the base. Accompanying an interactive 3D anatomical model with augmented reality is a great tool to encourage learning and support. This platform allows students to engage in comparative analysis of anatomical models as they compare and contrast the structure of individual organs. This initiative also provides a platform for continuing education, providing opportunities for all students to increase their knowledge of anatomy, physiology and pathophysiology. One-Year Warranty Ship Weight (LBs): 9.9 lbs. Dimensions. (Inches): 14.96 x 11.02 x 12.99