



SEM

SEM TRAINERS & SYSTEMS

WHERE TIME MOVES AHEAD TO KEEP PACE WITH KNOWLEDGE

SEM- Scientific Educative Methods in Science, Engineering & Medicine

Mobile : +91 88495 63724

Mobile 1: +91 98791 03905

Email: sem@semtrainers.com

Website: www.semtrainers.com



Pregnancy Series Models, Set of 8

Item No. MG31154

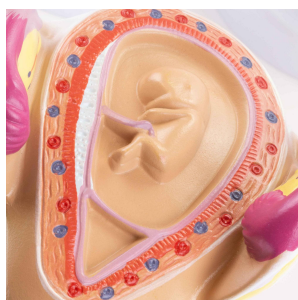
Weight 12.1 lbs

Make: Nasco Healthcare, USA

[Read More](#)

SKU:

Categories: Pregnancy Models



Product Description

This pregnancy series set with eight models demonstrates the development process of the human fetus from the 4th week to the 7th month of pregnancy. All the main anatomical structures of the uterus and fetus are represented. One of the models in the set shows a pregnancy with twins. Each model is mounted on an individual stand that can be removed for easy viewing. 1 month old embryo;; 2-month-old embryo; 3-month-old embryo; 4-month-old fetus (lying transversely); 5-month-old fetus (breech

position); 5-month-old fetus (lying transversely); Twin Fetuses aged 5 months (Normal Position); 7-month-old fetus. Accompanying an interactive 3D anatomical model with augmented reality is a great tool to encourage learning and support. This platform allows students to engage in comparative analysis of anatomical models as they compare and contrast the structure of individual organs. This initiative also provides a platform for continuing education, providing opportunities for all students to increase their knowledge of anatomy, physiology and pathophysiology. One-Year Warranty Ship Weight (LBs): 12.1 lbs. Dimensions. (Inches): 23.62 x 7.87 x 11.81