



SEM TRAINERS & SYSTEMS

WHERE TIME MOVES AHEAD TO KEEP PACE WITH KNOWLEDGE

SEM- Scientific Educative Methods in Science, Engineering & Medicine

Mobile : +91 88495 63724
Mobile 1: +91 98791 03905

Email: sem@semtrainers.com
Website: www.semtrainers.com



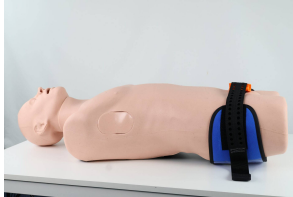
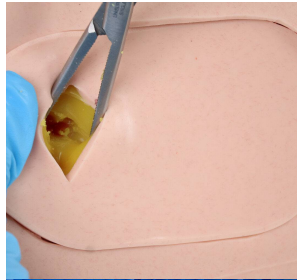
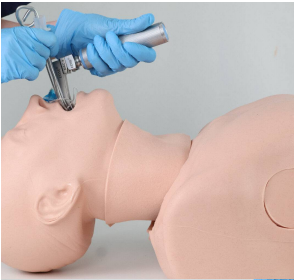
TruMan® Trauma Adult

Item No. TTA0001
Weight 20.4 lbs.
Make: TruCorp, UK

[Read More](#)

SKU:

Categories:Advanced Trauma Life Support (ATLS)



Product Description

Lifelike training in advanced airway management skills, CPR and emergency surgical procedures for

life threatening trauma situations. Anatomically correct simulated human torso and AirSim X airway facilitate training in percutaneous tracheostomy, needle & surgical cricothyroidotomy, chest tube insertion, needle decompression of tension pneumothorax and more.

Durable | Realistic | Simulation Ready

The TruMan Trauma Adult is built for performance and longevity. Designed with clinically accurate anatomy, it provides healthcare professionals with a hands-on learning experience. Durable and ready to use straight out of the case, this model ensures dependable simulation training in any environment.

Automatically Accurate

The torso model replicates the realistic **size, weight, and appearance** of an adult male, with clearly defined anatomical landmarks for CPR training, including full **head tilt, chin lift, and lifelike chest recoil**. Chest drains inserts simulate **skin, fat and muscle** tissue layers, while the **airway** – designed using CT DICOM data – features a realistic larynx with palpable cricoid landmarks, laryngeal cartilages & tracheal rings. Pelvic binding features detailed structures such as the **iliac crest, greater trochanters, and pelvic bone** for accurate trauma training.

Advanced Training Feature

The advanced trauma training system provides realistic simulation for key emergency procedures, such as **chest tube insertion, CPR, surgical and needle cricothyroidotomy and needle decompression** with true-to-life resistance and insertion depth.

Durability

The TruMan Trauma Adult is built for exceptional durability, withstanding:

80,000+ intubations **3,000+** chest needle decompression **250,000+** chest compressions **1,000+** bilateral needle decompressions Ensuring reliable long-term performance and minimal maintenance. This unit comes with a **2-year [warranty](#)** as standard.

Zero setup Required

Delivered ready to use in a durable carry case for transportation and safe storage.

Ideal for Busy Classroom

This manikin facilitates bilateral chest drain insertion and complete chest needle decompression training, enabling trainees to practice simultaneously. Its durable, cost-effective consumables and efficient design make it ideal for classroom-based learning.

Why Choose the TruMan® Trauma Adult for Your Simulation Lab in India?

The TruMan® Trauma Adult (Item No. TTA0001) by TruCorp®, UK is a clinically accurate adult male torso simulator weighing 9.25 kg, built for ATLS, emergency medicine, and critical care training in life-threatening trauma procedures — delivered ready to use, zero setup required, in a durable carry case. The airway is designed from CT DICOM data, reproducing the precise anatomy of the adult larynx with palpable cricoid landmarks, laryngeal cartilages, and tracheal rings — the same AirSim® X airway platform that carries TruCorp's 2-year warranty. The torso replicates the realistic size, weight, and appearance of an adult male with clearly defined anatomical landmarks, and the chest drain inserts simulate skin, fat, and muscle tissue layers with true-to-life resistance and insertion depth. For ATLS training centres, emergency medicine departments, anaesthesia skills labs, and NMC-mandated simulation labs in India that need a single torso covering the full range of life-threatening trauma procedures with exceptional durability, the TruMan® Trauma Adult is that platform.

The procedure set covers the core ATLS airway and thoracic emergency skills: percutaneous tracheostomy, needle cricothyroidotomy, surgical cricothyroidotomy, bilateral chest tube insertion (Seldinger and open technique), bilateral needle decompression for tension pneumothorax at the 2nd intercostal space midclavicular line, CPR with full head tilt, chin lift, and lifelike chest recoil, and endotracheal intubation via direct and video laryngoscopy with the full range of supraglottic devices. The pelvic binding module features detailed iliac crest, greater trochanter, and pelvic bone structures for accurate trauma assessment training. The durability specification is a direct operational advantage in high-volume simulation labs: 80,000+ intubations per airway insert, 250,000+ chest compressions, 3,000+ chest needle decompressions per insert, and 1,000+ bilateral needle decompressions — meaning consumable replacement frequency is significantly lower than comparable trainers. The USB-C connection enables compatibility with the TruMonitor® patient monitor simulator for integrated clinical decision-making training. The bilateral chest drain design enables two trainees to practise simultaneously, maximising throughput in classroom settings.

Why Buy from SEM Trainers? SEM Trainers & Systems is an authorized distributor of TruCorp® products in India with over 30 years of experience supplying medical simulators to 1,500+ institutions across 28 states. We provide pan-India delivery, on-site installation, faculty orientation, and dedicated after-sales support. All products carry genuine manufacturer warranty and meet ISO 9001 quality standards.

Frequently Asked Questions

Q: What is included in the standard package? A: One TruMan® Trauma Adult model (TTA0001), USB-C connection cable, carrier case, 100 ml TruCorp lubrication (TL001), one wrap around neck skin (RSN2005), five larynx inserts (NLX050 — one attached, four spare), and one set of torso chest drain inserts (CDNCN2).

Q: What is the difference between the TruMan® Trauma Adult (TTA0001) and the Smart TruMan® Trauma Adult? A: The Smart TruMan® Trauma Adult adds integrated electronic performance monitoring and feedback capability via the TruMonitor® system. The TTA0001 is the standard non-instrumented configuration with USB-C connectivity for optional TruMonitor® integration. Contact us for a comparison at sem@semtrainers.com.

Q: What is the warranty and how do I get support? A: The TruMan® Trauma Adult carries a 2-year warranty. For support in India, contact SEM Trainers at sem@semtrainers.com or +91-88495 63724.

Package Contents

- x1 TruMan Trauma Adult model (TTA0001)
- x1 USB C connection cable
- x1 TruMan Trauma Adult carrier case
- x1 100ml TruCorp lubrication (TL001)
- x1 Wrap Around Neck Skin (RSN2005)
- x5 Larynx Insert (NLX050) 1 attached, 4 extra
- x1 set of Torso Inserts – Chest Drain (CDNCN2)

Additional package contents:

- [Torso inserts](#)
- [Larynx inserts](#)
- [Wrap around neck skin](#)
- [Super Saver Trauma Training Pack](#)

▪