



## SEM TRAINERS & SYSTEMS

WHERE TIME MOVES AHEAD TO KEEP PACE WITH KNOWLEDGE

SEM- Scientific Educative Methods in Science, Engineering & Medicine

**Mobile :** +91 88495 63724  
**Mobile 1:** +91 98791 03905

**Email:** sem@semtrainers.com  
**Website:** www.semtrainers.com



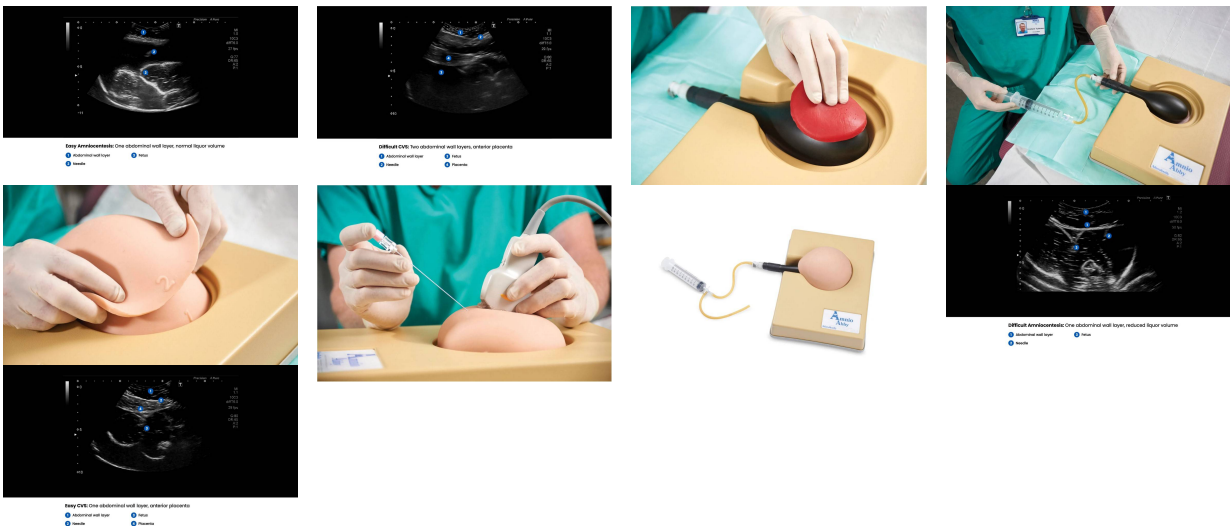
## Amnio Abby® - Ultrasound Guided Invasive Procedures Simulator

Item No. AR60  
Weight  
Make: Adam, Rouilly Limited, UK

[Read More](#)

**SKU:**

**Categories:**Ultrasound



### Product Description

Amnio Abby® offers realistic training in ultrasound-guided amniocentesis and chorionic villus sampling.

With a 15-week fetus, variable amniotic fluid, adjustable placenta, and layered abdominal walls, it supports safe practice of needle insertion, transplacental approaches, and advanced invasive procedures, strengthening clinician skills, confidence, and team-based obstetric training.

## Skills

- A range of easy and more difficult procedures can be experienced by varying fetal position, abdominal layers, amniotic fluid volume and placental position enhancing simulation for both new trainees and experienced clinicians
- Visualisation under ultrasound of key anatomical structures including abdominal wall, placenta, fetus, umbilical cord and amniotic fluid
- Identification of a suitable needle entry point in the simulated abdomen
- Monitoring of the needle path under real-time ultrasound guidance
- Successful withdrawal of an amniotic fluid sample
- Transplacental needle approach simulation (via placement of the placenta and adjustment of the amniotic volume)
- Chorionic villus sampling (CVS) procedures
- Clinical planning and team work before, during and after invasive procedures
- Patient communication

## Supplementing Invasive Procedures Competency

- As Non-invasive Prenatal Testing (NIPT) and other techniques reduce the need for amniocentesis and other ultrasound guided diagnostic procedures, trainees and operator skills can be enhanced using this realistic simulator
- To remain proficient, guidelines state “competency should be maintained by carrying out at least 30 ultrasound guided invasive procedures per annum”<sup>1</sup>
- Amnio Abby® can help operators to have sufficient confidence to perform more advanced techniques such as cordocentesis and intrafetal procedures that will continue to be required even with the decline in diagnostic invasive tests

<sup>1</sup> Professor Z Alfirevic FRCOG, Mr SA Walkinshaw FRCOG and Professor MD Kilby FRCOG. (2010). Amniocentesis and Chorionic Villus Sampling, Green-top Guideline No. 8. London. Royal College of Obstetricians and Gynaecologists, pp. 5 – 6

## Features

- Easy to use, minimal maintenance
- Highly realistic sonographic image
- 15 week size fetus with umbilical cord insertion
- Amniotic sac which may be punctured several times to allow for a number of invasive procedures to be simulated before replacement

- Variable amniotic fluid volume allowing for training to be tailored for easy or difficult procedures
- Separate placenta for posterior or anterior placement, to allow for transplacental scenarios as well as chorionic villus sampling (CVS) procedures
- Two abdominal layers to allow for simulation of patients with a higher BMI

## 2 Year Guarantee

- This model, manufactured by Adam,Rouilly, comes with a 2 Year Guarantee
- This guarantee applies to models which have been used correctly and covers durability and functionality

## Development

Developed in collaboration with **Dr Graham Tydeman**, Consultant in Obstetrics and Gynaecology – NHS Fife, **Professor Andy Shennan** – Professor of Obstetrics, and **Dr Annette Briley** – Consultant Midwife, Clinical Trial Manager, Maternal and Fetal Research Unit, Guy's and St Thomas' Hospital, the **Amnio Abby®** simulator has been designed to enhance training in **ultrasound guided amniocentesis and chorionic villus sampling (CVS)**. As Non-invasive Prenatal Testing (NIPT) becomes more common, Amnio Abby® enables clinicians to practice the skills and dexterity required for invasive procedures in a safe, controlled manner. Using our expertise in material innovation and anatomical accuracy, the simulator has been designed to give a highly realistic sonographic representation of a pregnant mother's abdomen at 15 week gestation. To enhance training scenarios the simulator includes two abdominal wall layers to simulate patients with increased Body Mass Index (BMI), variable amniotic liquor volume and separate placenta to ensure competency and help increase required skill levels.

## Includes

- 2 abdominal layers
- Fetal sac with 15 week-old sized fetus and umbilical cord
- Separate placenta
- Sac filling syringe and tubing
- Base
- Carrying case

Why Choose the Amnio Abby® Ultrasound-Guided Invasive Procedures Simulator (AR60) for Your Simulation Lab in India?

The Amnio Abby® (Item No. AR60) by Adam, Rouilly Limited, UK is a phantom simulator for ultrasound-guided amniocentesis and chorionic villus sampling (CVS) training, developed in collaboration with consultant obstetricians and maternal-fetal medicine specialists at Guy's and St Thomas' Hospital,

London. For fetal medicine units, obstetrics and gynaecology residency programmes, maternal-fetal medicine fellowship training, and high-risk obstetrics training centres in India, Amnio Abby® provides the only category of simulator that can address a growing clinical training gap: as Non-invasive Prenatal Testing (NIPT) reduces the volume of diagnostic amniocenteses performed, trainees and practising clinicians are losing the case exposure needed to maintain procedural competency. Current RCOG guidance specifies that competency should be maintained by carrying out at least 30 ultrasound-guided invasive procedures per year — a threshold that is increasingly difficult to meet through clinical caseload alone.

The simulator presents a 15-week gestation abdomen with a realistic sonographic image under real ultrasound — trainees visualise the abdominal wall layers, placenta, fetus, umbilical cord, and amniotic fluid on their own ultrasound machine before and during needle insertion. Amniotic fluid volume is variable, allowing the instructor to configure easy or more challenging scenarios; the placenta is a separate removable component that can be placed anteriorly or posteriorly to simulate transplacental approaches and CVS procedures. Two interchangeable abdominal wall layers allow simulation of patients with a higher BMI, adding procedural difficulty for more advanced trainees. The amniotic sac can be punctured multiple times before requiring replacement, supporting repeated practice within a single session. The simulator also supports progression to advanced techniques including cordocentesis and intrafetal procedures, which will continue to be required regardless of the decline in routine diagnostic invasive testing.

The Amnio Abby® carries a 2-year manufacturer guarantee covering durability and functionality under correct use. The complete set includes two abdominal layers, a fetal sac with 15-week fetus and umbilical cord insertion, a separate placenta, a sac filling syringe and tubing, a base, and a carrying case.

### Why Buy from SEM Trainers?

SEM Trainers & Systems is an authorized distributor of Adam, Rouilly products in India with over 30 years of experience supplying medical simulators to 1,500+ institutions across 28 states. We provide pan-India delivery, on-site installation, faculty orientation, and dedicated after-sales support.

Q: Does this simulator work with our own ultrasound machine? A: Yes. Amnio Abby® is designed to produce a realistic sonographic image under real ultrasound — no proprietary screen or software is required. Trainees use their own department ultrasound probe directly on the simulator.

Q: What procedures can be practised? A: Amniocentesis, chorionic villus sampling (CVS), transplacental needle approaches, and — for advanced trainees — cordocentesis and intrafetal procedures.

Q: Can the difficulty level be adjusted? A: Yes, in multiple ways — by varying amniotic fluid volume, changing placental position from posterior to anterior, altering fetal position, and switching between the standard and higher-BMI abdominal layers.

Q: How many times can the amniotic sac be punctured before replacement? A: The sac can be punctured several times before requiring replacement, supporting multiple procedures per session.

Q: What is the manufacturer guarantee period? A: Two years, covering durability and functionality under correct use.

## **Manufacturer**

Adam,Rouilly <sup>▪</sup>