



## SEM TRAINERS & SYSTEMS

WHERE TIME MOVES AHEAD TO KEEP PACE WITH KNOWLEDGE

SEM- Scientific Educative Methods in Science, Engineering & Medicine

**Mobile :** +91 88495 63724  
**Mobile 1:** +91 98791 03905

**Email:** sem@semtrainers.com  
**Website:** www.semtrainers.com



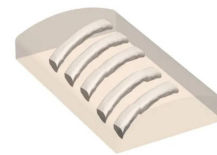
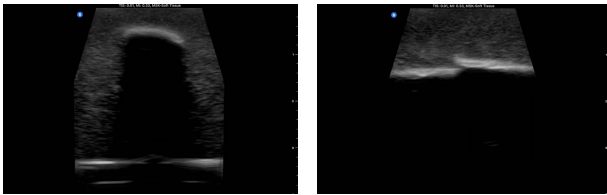
## Ultrasound Phantom - Bone Fracture, Light

**Item No.** AV711  
**Weight**  
**Make:** Adam, Rouilly Limited, UK

[Read More](#)

**SKU:**

**Categories:**Ultrasound



## Product Description

VATA's Ultrasound Phantom – Bone Fracture is a great training aid for developing skills required to localize bone fractures in soft tissue. The unique patient simulation material is flesh colored with the tactile feel and puncture resistance of human tissue. **Features**

- 5 bones present in model (3 bones superficial and 2 deeper)
- 1 healthy bone with no fracture and 4 with varying degrees of fractures
- Flesh toned and curved with a contour that mimics patients
- Exceptional image quality

## Important

- Ultrasound machine not included

The Ultrasound Phantom – Bone Fracture, Light (Item No. AV711) by VATA, distributed by Adam Rouilly Limited, UK is a point-of-care ultrasound (POCUS) training phantom specifically designed for developing skills in localising bone fractures in soft tissue using diagnostic ultrasound — the fastest-growing emergency and orthopaedic bedside skill in India's medical colleges and trauma centres. For emergency medicine training programmes, orthopaedic surgery simulation labs, POCUS training courses, and NMC-mandated clinical skills labs in India that need a dedicated bone fracture ultrasound phantom with multiple fracture presentations on a single model, this is the specific-use phantom for that training need. Ultrasound machine is not included.

The phantom contains five bones embedded in VATA's unique patient simulation material — flesh coloured with the tactile feel and puncture resistance of human tissue, curved with a contour that mimics real patients on the examination table. Three bones are positioned superficially for easier probe placement and image acquisition during early-stage training, and two are deeper for more advanced scan planning and image optimisation exercises. One bone is completely healthy with no fracture — providing a normal reference image — and four bones present varying degrees of fractures, ranging from subtle to displaced, enabling a structured curriculum that progresses from identifying obvious pathology to recognising equivocal findings. Exceptional image quality is a stated design standard for all VATA phantoms, ensuring trainees develop skill on ultrasound images that accurately represent what they will see in clinical practice.

**Why Buy from SEM Trainers?** SEM Trainers & Systems has over 30 years of experience supplying medical simulators and ultrasound training phantoms to 1,500+ institutions across 28 states in India. We provide pan-India delivery, on-site installation, faculty orientation, and dedicated after-sales support.

**Q: How many bones are in this phantom and what is their arrangement?** A: Five bones — 3 superficial and 2 deeper — with 1 healthy (no fracture) and 4 presenting varying degrees of fractures for progressive training.

**Q: Is an ultrasound machine included?** A: No. A compatible ultrasound machine must be available separately.

**Q: What is the skin tone of this phantom?** A: Light skin tone (AV711). Confirm with SEM Trainers whether a dark skin tone variant is available.

## **Manufacturer**

VATA