



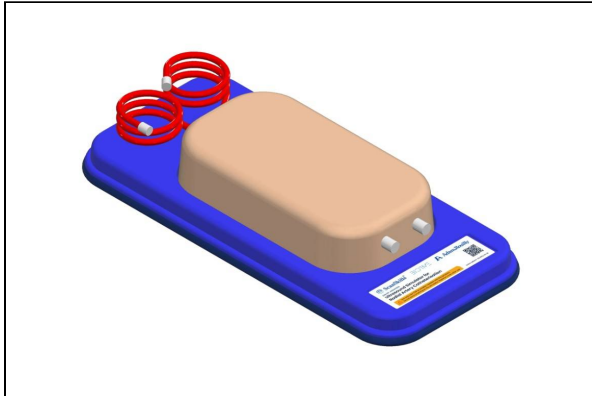
## SEM TRAINERS & SYSTEMS

WHERE TIME MOVES AHEAD TO KEEP PACE WITH KNOWLEDGE

SEM- Scientific Educational Methods in Science, Engineering & Medicine

**Mobile :** +91 88495 63724  
**Mobile 1:** +91 98791 03905

**Email:** sem@semtrainers.com  
**Website:** www.semtrainers.com



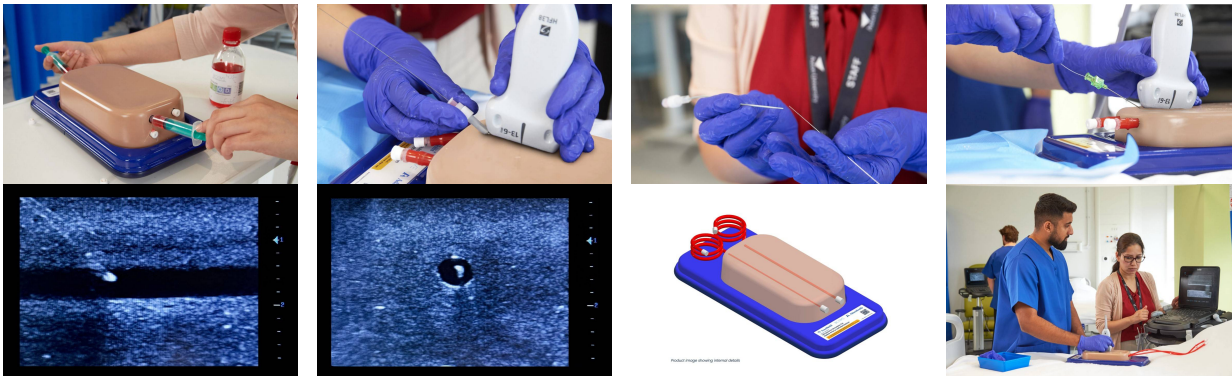
## Ultrasound Simulator for Radial Artery Catheterisation, Light

**Item No.** ARB401  
**Weight**  
**Make:** Adam, Rouilly Limited, UK

[Read More](#)

**SKU:**

**Categories:**Ultrasound



### Product Description

Designed for realistic radial artery catheterisation practice, this simulator includes two arteries (2.5–4 mm) positioned 10 mm below the surface within lifelike echogenic material. Extended artery lengths allow complete procedural training, supporting accurate needle insertion, probe control, anatomy recognition, and vascular access skills safely in a controlled learning environment.

Our first release is the exceptional collection of BIOTME ultrasound trainers available in both light and dark skin tones.

These products are simple, powerful training devices which allow repeated, realistic practice of ultrasound guided invasive technique. Additionally, ultrasound machine proficiency, probe dexterity and recognition of anatomical structures can be learnt – all with minimal set up and maintenance.

BIOTME are constructed from a specialist material that mimics real human tissue both in feel and in its echogenic properties. On interventional models, needle traces disappear within a few days after practice (when used with 23G or smaller needles) – enhancing both the realism and cost-effectiveness of these trainers. The materials used in the BIOTME collection are fully recyclable and can be returned to us when the time comes to replace them.

## Skills

- Identification of veins under ultrasound
- Handling of vascular access devices
- General use of ultrasound machine controls, adjustment and probe dexterity
- Learn invasive techniques safely in a controlled environment

## Features

- For practice of artery catheterisation techniques
- Includes extended lengths to arteries in order to practice the complete technique
- Contains two arteries of diameters approximately 2.5 mm and 4 mm located 10 mm below the surface of the simulator
- Soft, realistic echogenic material which mimics human tissue
- Needle traces disappear after a few days
- Tubeless veins occlude when pressed either by hand or ultrasound probe
- Vein occlusion is visible under ultrasound
- Latex free
- Allows for mock blood to be extracted or liquid to be injected
- Veins pre-filled with mock blood. Easily refill with our **ARB600 Mock Blood Refill Kit**
- Highly mobile all in one trainer on a base with Protective storage cover

## Important

- Ultrasound gel must be used with the models

- Use only new 23G or smaller needles with this product
- Replace cover after use
- Do not store anything on the simulator
- Size (base and lid L/W/H) 393, 176.9, 87.2 mm

## Includes

- BIOTME ultrasound simulator mounted on a base
- Protective storage cover
- Instruction manual

## Why Choose the BIOTME Ultrasound Simulator for Radial Artery Catheterisation – Light for Your Simulation Lab in India?

The Ultrasound Simulator for Radial Artery Catheterisation – Light (Item No. ARB401, 393 × 176.9 × 87.2 mm including base and lid) by BIOTME, distributed by Adam Rouilly Limited, UK is a purpose-built ultrasound-guided radial artery catheterisation trainer — containing two arteries of approximately 2.5 mm and 4 mm diameter positioned 10 mm below the tissue surface, with extended artery lengths enabling complete procedural training from probe placement and anatomy identification through to needle insertion and cannulation technique. For anaesthesiology training programmes, critical care medicine courses, emergency medicine training, and NMC-mandated simulation labs in India that need to train ultrasound-guided radial artery catheterisation safely before trainees perform arterial line insertion on real patients, this is a dedicated single-procedure trainer built specifically for that skill. Ultrasound gel must be used with this model.

BIOTME's specialist tissue material mimics real human tissue in both tactile feel and echogenic properties — arteries and surrounding tissue appear under ultrasound as they would in a real patient, training both probe technique and image interpretation alongside needle insertion skill. A distinctive feature of BIOTME material is self-healing: needle traces disappear within a few days when using 23G or smaller needles, making each training session available on the same simulator without visible evidence of previous punctures — extending the useful training life significantly beyond standard fixed phantoms. Tubeless arteries occlude when compressed by hand or ultrasound probe, with occlusion visible under ultrasound — training the critical probe-pressure management skill that affects image quality and vessel assessment. The arteries are pre-filled with mock blood, allowing mock blood extraction practice; refilling is straightforward with the ARB600 Mock Blood Refill Kit. The fully recyclable material can be returned when replacement is needed. Latex free. Highly mobile, mounted on a base with a protective storage cover.

Includes: BIOTME ultrasound simulator mounted on a base, protective storage cover, and instruction manual. Not included: ultrasound machine, ultrasound gel.

**Why Buy from SEM Trainers?** SEM Trainers & Systems has over 30 years of experience supplying medical simulators and ultrasound training phantoms to 1,500+ institutions across 28 states in India. We provide pan-India delivery, on-site installation, faculty orientation, and dedicated after-sales support.

**Q: What artery diameters and depths are present in this simulator?** A: Two arteries — approximately 2.5 mm and 4 mm diameter — both positioned 10 mm below the tissue surface, with extended lengths for complete procedural training.

**Q: Do needle puncture marks remain visible after training sessions?** A: No. The BIOTME material is self-healing — needle traces disappear within a few days when using 23G or smaller needles, restoring the phantom's appearance for subsequent training sessions.

**Q: What consumable is needed for refilling?** A: The ARB600 Mock Blood Refill Kit, available separately, is the compatible refill product for this simulator.

## **Manufacturer**

BIOTME