



## SEM TRAINERS & SYSTEMS

WHERE TIME MOVES AHEAD TO KEEP PACE WITH KNOWLEDGE

SEM- Scientific Educative Methods in Science, Engineering & Medicine

**Mobile :** +91 88495 63724  
**Mobile 1:** +91 98791 03905

**Email:** sem@semtrainers.com  
**Website:** www.semtrainers.com



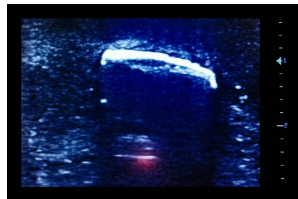
## Ultrasound Simulator with Foreign Bodies, Light

**Item No.** ARB206  
**Weight**  
**Make:** Adam, Rouilly Limited, UK

[Read More](#)

**SKU:**

**Categories:**Ultrasound



## Product Description

Designed for realistic ultrasound training in locating and assessing foreign objects, this simulator supports probe control and anatomy recognition. Lifelike echogenic material mimics human tissue, containing a pin, bullet, pellet, metal shard, and splinter for accurate identification and assessment

under ultrasound in a safe, controlled learning environment.

Our first release is the exceptional collection of BIOTME ultrasound trainers available in both light and dark skin tones.

These products are simple, powerful training devices which allow repeated, realistic practice of ultrasound guided invasive technique. Additionally, ultrasound machine proficiency, probe dexterity and recognition of anatomical structures can be learnt – all with minimal set up and maintenance.

BIOTME are constructed from a specialist material that mimics real human tissue both in feel and in its echogenic properties. On interventional models, needle traces disappear within a few days after practice (when used with 23G or smaller needles) – enhancing both the realism and cost-effectiveness of these trainers. The materials used in the BIOTME collection are fully recyclable and can be returned to us when the time comes to replace them.

## Skills

- Identification of foreign bodies under ultrasound
- General use of ultrasound machine controls, adjustment and probe dexterity
- Learn safely in a controlled environment

## Features

- For the location and assessment of foreign bodies
- Contains a pin, bullet, pellet, metal shard, and a splinter
- Soft, realistic echogenic material which mimics human tissue
- Latex free
- Highly mobile all in one trainer on a base with Protective storage cover

## Important

- Ultrasound gel must be used with the models
- Use only new 23G or smaller needles with this product
- Replace cover after use
- Do not store anything on the simulator
- Size (base and lid L/W/H) 338, 176.9, 87.2 mm

## Includes

- BIOTME ultrasound simulator mounted on a base
- Protective storage cover
- Instruction manual

## **Why Choose the BIOTME Ultrasound Simulator with Foreign Bodies – Light for Your Simulation Lab in India?**

The Ultrasound Simulator with Foreign Bodies – Light (Item No. ARB206, 338 × 176.9 × 87.2 mm including base and lid) by BIOTME, distributed by Adam Rouilly Limited, UK is a purpose-built ultrasound training simulator for foreign body localisation and assessment — containing five embedded foreign objects (pin, bullet, pellet, metal shard, and splinter) in lifelike echogenic material, enabling realistic, repeatable training in identifying and characterising sub-surface foreign bodies under ultrasound before extraction. For emergency medicine training programmes, trauma surgery courses, military pre-hospital training, and NMC-mandated simulation labs in India that need to train soft tissue foreign body ultrasound assessment, this simulator provides the complete range of clinically encountered embedded foreign object types on a single compact platform. Ultrasound gel must be used with this model.

Foreign body localisation under ultrasound is a critical pre-extraction clinical skill — identifying the exact position, depth, orientation, and material type of an embedded object determines the safest extraction approach and avoids inadvertent injury to adjacent structures. The five embedded objects span the most clinically significant foreign body categories: metallic (pin, bullet, pellet, metal shard) which produce characteristic posterior acoustic shadowing under ultrasound, and organic (splinter) which are particularly challenging to localise due to lower echogenicity — training trainees to distinguish between these ultrasound characteristics and adjust probe technique accordingly. BIOTME's specialist tissue material mimics real human tissue in both feel and echogenic properties, providing realistic ultrasound images that accurately represent what trainees will encounter clinically. Latex free. Highly mobile, mounted on a base with protective storage cover.

Includes: BIOTME ultrasound simulator mounted on a base, protective storage cover, and instruction manual. Not included: ultrasound machine, ultrasound gel.

**Why Buy from SEM Trainers?** SEM Trainers & Systems has over 30 years of experience supplying medical simulators and ultrasound training phantoms to 1,500+ institutions across 28 states in India. We provide pan-India delivery, on-site installation, faculty orientation, and dedicated after-sales

support.

**Q: What foreign bodies are embedded in this simulator?** A: Five — a pin, bullet, pellet, metal shard, and splinter — covering both metallic and organic foreign body types with distinct ultrasound characteristics.

**Q: Is this simulator for foreign body extraction training or identification only?** A: Identification and assessment under ultrasound. The embedded objects are permanent within the material; this trainer develops the localisation and characterisation skills that precede extraction, not the extraction technique itself.

**Q: Does this simulator require needle insertion?** A: Needle insertion is possible with 23G or smaller needles, though the primary skill trained is probe-based foreign body identification and assessment rather than needle-guided extraction.

## **Manufacturer**

BIOTME