



SEM TRAINERS & SYSTEMS

WHERE TIME MOVES AHEAD TO KEEP PACE WITH KNOWLEDGE

SEM- Scientific Educative Methods in Science, Engineering & Medicine

Mobile : +91 88495 63724
Mobile 1: +91 98791 03905

Email: sem@semtrainers.com
Website: www.semtrainers.com



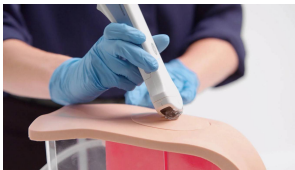
Suprapubic Insertion Unit (Ultrasound Guided), Light

Item No. ALT60852
Weight
Make: Adam, Rouilly Limited, UK

[Read More](#)

SKU:

Categories:Ultrasound



Product Description

The Limbs & Things Suprapubic Insertion Unit can be used independently or combined with another catheterisation trainer for a real to life simulation. This module allows for the practice of the surgical procedure of suprapubic catheterisation and is made of echolucent silicone for ultrasound guided procedures.

Skills

- Suprapubic catheter management on female anatomy
- Blind and ultrasound guided suprapubic catheter insertion

- Ultrasound bladder scanning on a full bladder

Features

- Ultrasound bladder scanning – allows for ultrasound identification of urine present in the bladder, reducing risks associated with CaUTI
- Ultrasound guided Suprapubic Catheterisation – allows for advanced procedure training in Urology
- Allows for the practice of Blind Suprapubic Catheterisation
- More robust design means longer lasting models, keeping on-going costs lower
- Ability to view catheter path when modules are used outside of the Pelvic Shell
- Improved Water System
- Softer, more realistic anatomy
- Anatomy:
 - Pubic bone
 - Rectus sheath
 - Anatomically accurate bladder
- Improved internal anatomy to allow for smoother insertion of catheter into the bladder
- New ultrasound bladder scanning aides in identification of urine in the bladder, reducing risks associated with CaUTI
- Ultrasound guided catheterization allows for more advanced Urology training
- Modules are interchangeable, and fit with the Male and Female Urinary Catheterisation models
- Ability to view the path of the catheter during procedures
- Non-drip valve
- Simulated Patient: can be used with a standardised patient to help improve communication skills

Includes

- ALT60857 Suprapubic Catheterisation Module, Light
- ALT60858 Suprapubic Insertion Bungs (x2)
- ALT60863 Water System

Cleaning & Safety

- Drain all water from the product
- Remove all catheters from the trainer
- Clean product surface with soft, damp cloth and mild detergent
- Allow trainer to dry completely before storing
- Components of the trainer are latex free
- Always deflate the balloon before removing a catheter

Why Choose the Suprapubic Insertion Unit (Ultrasound Guided), Light for Your Urology Training Programme in India?

The Suprapubic Insertion Unit (Ultrasound Guided), Light (Item No. ALT60852) by Limbs & Things is a urology training module that lets trainees practice the full suprapubic catheterisation pathway — from ultrasound bladder scanning through to catheter insertion — on realistic, echolucent silicone anatomy. For urology departments, nursing skills labs, and emergency medicine training centres in India that need to train both blind and ultrasound-guided suprapubic catheterisation technique, this module can be used on its own or combined with another catheterisation trainer for a more complete simulation.

The unit supports ultrasound bladder scanning, allowing trainees to confirm the presence of urine before inserting a catheter — a step that reduces the risk of catheter-associated urinary tract infection (CaUTI) in real practice. It also supports ultrasound-guided suprapubic catheterisation for advanced urology training, as well as blind suprapubic catheterisation technique. The model features anatomically accurate internal structures, including the pubic bone, rectus sheath, and bladder, with improved internal anatomy for smoother catheter insertion and the ability to view the catheter's path when the module is used outside the pelvic shell. A non-drip valve and improved water system support cleaner, more realistic repeated use, and the more robust design extends the model's working life to help keep ongoing costs down. Modules are interchangeable and fit with the Male and Female Urinary Catheterisation models, and the unit can also be used alongside a standardised patient to build communication skills. Components are latex-free.

Includes: ALT60857 Suprapubic Catheterisation Module, Light; ALT60858 Suprapubic Insertion Bungs (x2); ALT60863 Water System.

Why Buy from SEM Trainers?

SEM Trainers & Systems is an authorized distributor of Limbs & Things products in India with over 30 years of experience supplying medical simulators to 1,500+ institutions across 28 states. We provide pan-India delivery, on-site installation, faculty orientation, and dedicated after-sales support.

Q: Can this be used independently, or does it need another trainer? A: It can be used independently, or

combined with another catheterisation trainer for a more complete, realistic simulation.

Q: What procedures can be practiced? A: Ultrasound bladder scanning, blind suprapubic catheter insertion, and ultrasound-guided suprapubic catheter insertion.

Q: What's included? A: The Suprapubic Catheterisation Module (Light), two Suprapubic Insertion Bungs, and a Water System.

Manufacturer

Limbs & Things