



SEM TRAINERS & SYSTEMS

WHERE TIME MOVES AHEAD TO KEEP PACE WITH KNOWLEDGE

SEM- Scientific Educative Methods in Science, Engineering & Medicine

Mobile : +91 88495 63724
Mobile 1: +91 98791 03905

Email: sem@semtrainers.com
Website: www.semtrainers.com

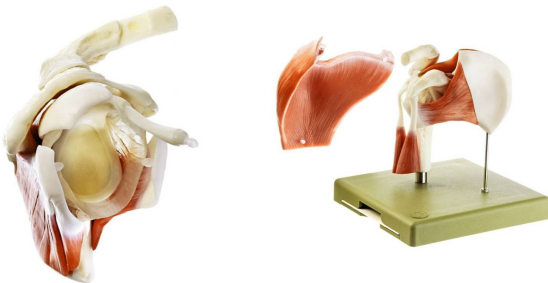


Model of the Shoulder Joint

[Read More](#)

SKU:

Categories: Joint Models



Product Description

Adam Rouilly offers a wide selection of Anatomical Models - Bones (Extremities/Joints). Explore our diverse collection tailored to precise educational needs. Our models provide effective tools for medical training and anatomical study, enhancing teaching and learning experiences.

Skills

- Modelled according to nature, in SOMSO-PLAST®
- Developed in collaboration with Dr. med. Wolfgang Birkner
- Representation of the ligaments, the capsule, and the muscles with an emphasis on the rotator cuff
- Separates into 12 parts
- On a stand with green base
- H 19 cm, W 18 cm, D 18 cm
- Weight 800 g

Manufacturer

SOMSO