



SEM TRAINERS & SYSTEMS

WHERE TIME MOVES AHEAD TO KEEP PACE WITH KNOWLEDGE

SEM- Scientific Educative Methods in Science, Engineering & Medicine

Mobile : +91 88495 63724
Mobile 1: +91 98791 03905

Email: sem@semtrainers.com
Website: www.semtrainers.com

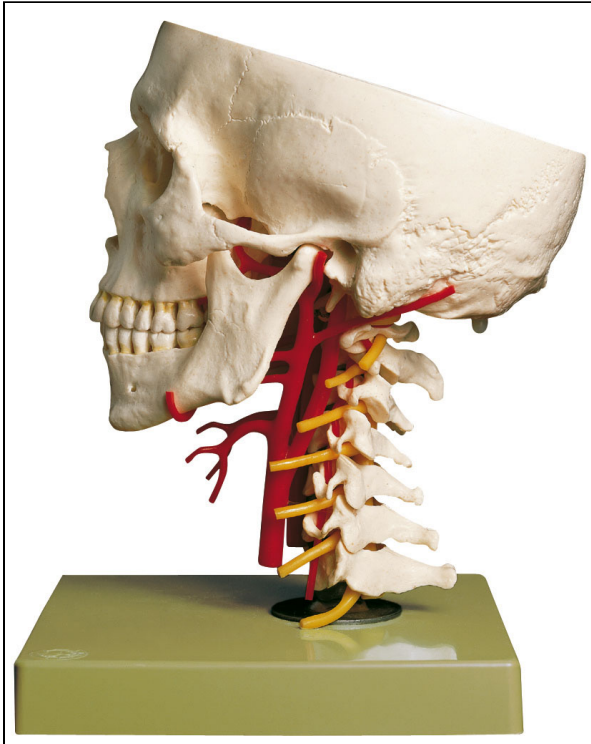
Artificial Base of Skull With Arteries

Item No. PO81/6
Weight 1.2kg.
Make: Adam, Rouilly Limited, UK

[Read More](#)

SKU:

Categories:Human Skull Models



Product Description

Adam Rouilly offers a wide selection of Anatomical Models - Bones (Skeleton). Explore our diverse collection designed for precise educational needs. Our models deliver effective tools for medical training and anatomical study, enhancing teaching and learning experiences.

Features

- Modelled according to nature, in SOMSO-PLAST®
- Comprises: base of skull, mandible, and cervical vertebrae with nerves
- Representation of cervical arteries with internal passage through the base of skull with emphasis on basilar artery with complete circle of Willis
- In one piece
- Movable
- On a stand with green base
- H 27 cm, W 18 cm, D 20 cm
- Weight 1.2 kg