



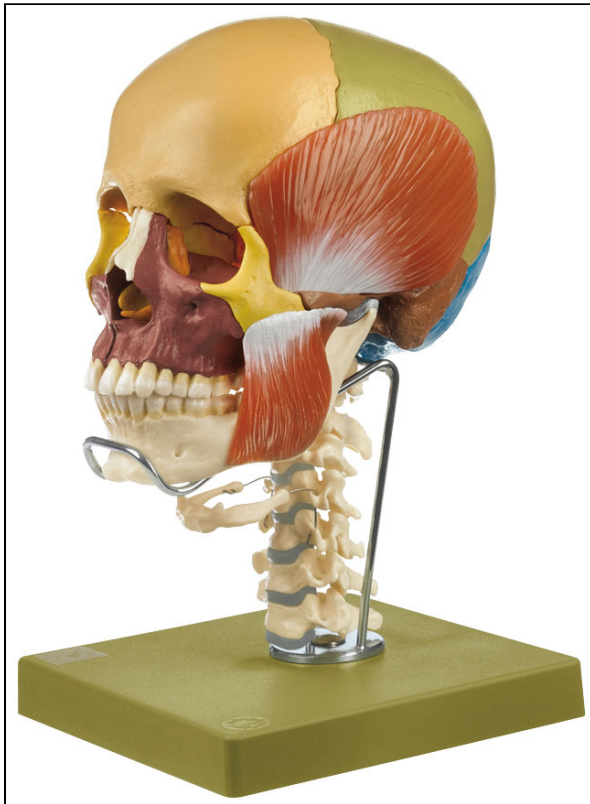
SEM TRAINERS & SYSTEMS

WHERE TIME MOVES AHEAD TO KEEP PACE WITH KNOWLEDGE

SEM- Scientific Educative Methods in Science, Engineering & Medicine

Mobile : +91 88495 63724
Mobile 1: +91 98791 03905

Email: sem@semtrainers.com
Website: www.semtrainers.com



14 Part Coloured Skull + Muscles, Cervical Spine & Hyoid Bone

Item No. PO104/C+M
Weight
Make: Adam, Rouilly Limited, UK

[Read More](#)

SKU:

Categories: Human Skull Models

Product Description

Adam Rouilly offers a wide selection of Anatomical Models - Bones (Skull). Explore our diverse collection tailored to precise educational needs. Our models provide effective tools for medical training and anatomical study, enhancing teaching and learning experiences.

Features

- Modelled according to nature, in SOMSO-PLAST®, after Prof. Dr. med. Dr. med. h.c. J.W. Rohen, Department of Anatomy, University of Erlangen
- 14 Part skull as PO104 but with the addition of:
 - Cervical spine
 - Hyoid bone
 - Cervical spine and hyoid bone as PO104/C
 - Four muscles of mastication as PO104/M which can be individually removed and reassembled in their natural position:
 - Temporalis
 - Masseter
 - Lateral
 - Medial pterygoid
 - Shows the relationship of the masticatory muscles to the temporomandibular joint and lower jaw
 - Muscles are shown natural size, in SOMSO-Plast®
- The model of the skull comprises 14 individual parts, that can be disassembled and put back together by way of plug connections
- The individual cranial bones are coloured
- Besides the bones of the cranium (frontal, parietal, temporal, occipital, and sphenoidal), those of the viscerocranium (ethmoid, vomer, zygomatic, maxilla, mandible) can be isolated or re-assembled to form the mosaic of the entire skull

Product parts

14

Manufacturer

SOMSO