



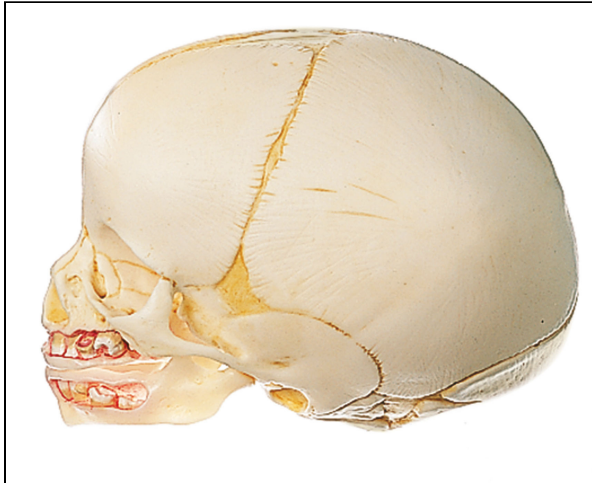
SEM TRAINERS & SYSTEMS

WHERE TIME MOVES AHEAD TO KEEP PACE WITH KNOWLEDGE

SEM- Scientific Educative Methods in Science, Engineering & Medicine

Mobile : +91 88495 63724
Mobile 1: +91 98791 03905

Email: sem@semtrainers.com
Website: www.semtrainers.com



Artificial Skull of a Newborn

Item No. PO4
Weight 250 g
Make: Adam, Rouilly Limited, UK

[Read More](#)

SKU:

Categories: Human Skull Models

Product Description

Adam Rouilly offers a wide selection of Anatomical Models - Bones (Skull). Explore our diverse collection tailored to precise educational needs. Our models provide effective tools for medical training and anatomical study, enhancing teaching and learning experiences.

Features

- Modelled according to nature, in SOMSO-PLAST®
- Separates into 2 parts
- Upper and lower jaw are open
- Circumference: 33.9 cm
- Weight 250 g