



SEM TRAINERS & SYSTEMS

WHERE TIME MOVES AHEAD TO KEEP PACE WITH KNOWLEDGE

SEM- Scientific Educative Methods in Science, Engineering & Medicine

Mobile : +91 88495 63724
Mobile 1: +91 98791 03905

Email: sem@semtrainers.com
Website: www.semtrainers.com



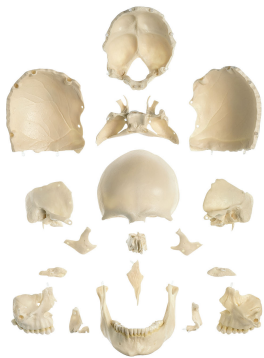
18 Part Model of Skull

Item No. PO101/218
Weight
Make: Adam, Rouilly Limited, UK

[Read More](#)

SKU:

Categories: Human Skull Models



Product Description

Adam Rouilly offers a wide selection of Anatomical Models - Bones (Skull). Explore our diverse collection tailored to precise educational needs. Our models provide effective tools for medical training

and anatomical study, enhancing teaching and learning experiences.

Features

- Modelled according to nature, in SOMSO-PLAST®, after Prof. Dr. med. Dr. med. hc. J.W. Rohen, Department of Anatomy, University of Erlangen
- The model of the skull comprises 18 individual parts, that can be disassembled and put back together by way of plug connections
- Besides the bones of the cranium (frontal, parietal, temporal, occipital, and sphenoidal), those of the viscerocranium (ethmoid, vomer, palatine, zygomatic, maxilla, mandible) as well as the inferior nasal concha (concha nasalis inf.) can be isolated or re-assembled to form the mosaic of the entire skull

Product parts

18

Manufacturer

SOMSO