



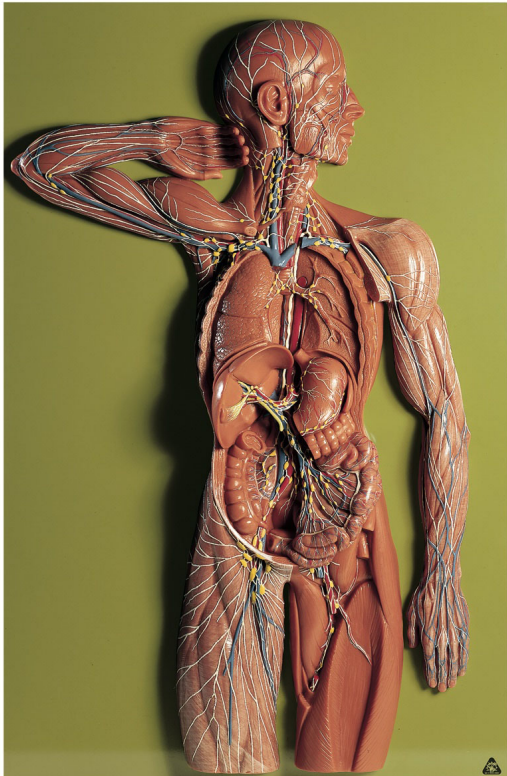
SEM TRAINERS & SYSTEMS

WHERE TIME MOVES AHEAD TO KEEP PACE WITH KNOWLEDGE

SEM- Scientific Educative Methods in Science, Engineering & Medicine

Mobile : +91 88495 63724
Mobile 1: +91 98791 03905

Email: sem@semtrainers.com
Website: www.semtrainers.com



Lymphatic System

Item No. MH33
Weight 8.25 kg
Make: Adam, Rouilly Limited, UK

[Read More](#)

SKU:

Categories: Human Heart Models

Product Description

Adam Rouilly offers a wide selection of Anatomical Models - Circulatory Organs/Heart. Explore our diverse collection tailored to precise educational needs. Our models provide effective tools for medical training and anatomical study, enhancing teaching and learning experiences.

Features

- Relief model, approximately 2/3 natural size, in SOMSOPLAST®
- In one piece
- Mounted on a green board
- H 84 cm, W 54 cm, D 10 cm
- Weight 8.25 kg