



## SEM TRAINERS & SYSTEMS

WHERE TIME MOVES AHEAD TO KEEP PACE WITH KNOWLEDGE

SEM- Scientific Educative Methods in Science, Engineering & Medicine

**Mobile :** +91 88495 63724  
**Mobile 1:** +91 98791 03905

**Email:** sem@semtrainers.com  
**Website:** www.semtrainers.com

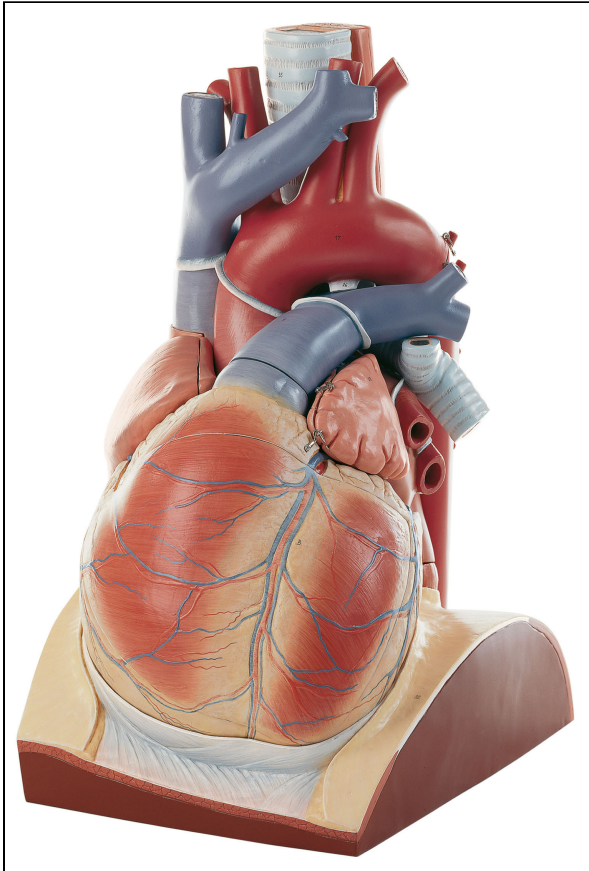
## Heart (Lecture Theatre Model)

**Item No.** MH29  
**Weight** 24 kg  
**Make:** Adam, Rouilly Limited, UK

[Read More](#)

**SKU:**

**Categories:** Human Heart Models



## Product Description

Adam Rouilly offers a wide selection of Anatomical Models - Circulatory Organs/Heart. Explore our diverse collection tailored to precise educational needs. Our models provide effective tools for medical training and anatomical study, enhancing teaching and learning experiences.

### Skills

- Enlarged approximately 4 times, in SOMSO-PLAST®
- This model of the human heart can be separated and combined in many ways
- It is mounted in a natural position on a diaphragm base and is of special interest for teaching in lecture theatres
- The crown of the heart and the ventricular base can be demonstrated
- The proportions of the pericardium can be demonstrated at the corresponding intersecting lines, the plane of the valve with semilunar and sigmoid valves and the passage of the coronary vessels can be demonstrated in their correlation
- Trachea and oesophagus can be seen as well as the descending aorta
- Separates into 10 parts: base of the diaphragm, ventricular base with ventricles (2 parts), crown of the heart, right auricle, left auricle, pulmonary artery, aorta (2 parts), trachea, and oesophagus
- On a green base
- H 76 cm, W 48cm, D 60 cm
- Weight 24 kg