



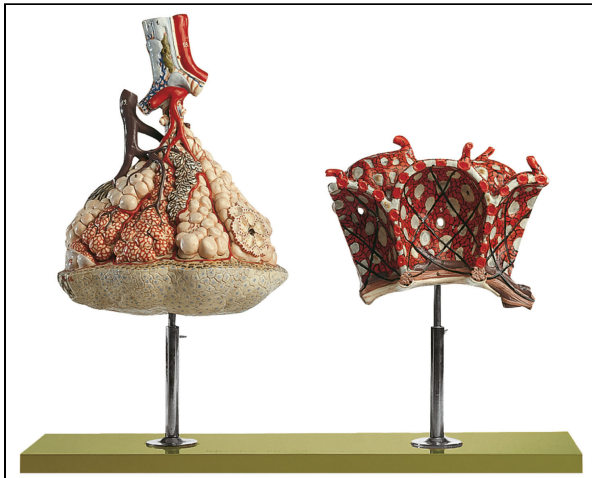
SEM TRAINERS & SYSTEMS

WHERE TIME MOVES AHEAD TO KEEP PACE WITH KNOWLEDGE

SEM- Scientific Educative Methods in Science, Engineering & Medicine

Mobile : +91 88495 63724
Mobile 1: +91 98791 03905

Email: sem@semtrainers.com
Website: www.semtrainers.com



Lobule of the Lung With Additional Model Pulmonary Alveoli

Item No. MH24
Weight 2.65 kg
Make: Adam, Rouilly Limited, UK

[Read More](#)

SKU:

Categories:Lung Models

Product Description

Adam Rouilly offers a wide selection of Anatomical Models - Circulatory Organs/Heart. Explore our diverse collection tailored to precise educational needs. Our models provide effective tools for medical training and anatomical study, enhancing teaching and learning experiences.

Features

- Lobule of the lung:
 - Enlarged approximately 150 times, in SOMSO-Plast®
 - Representation of lobule with arterial and venous circulation and bronchial branches
 - One acinus open to show the alveolar duct
- Model of an adjacent alveolus:
 - Enlarged approximately 1000 times, in SOMSO-Plast®
 - Representation of the alveolar wall, its vessels, the epithelial cover and the elastic and muscular elements

- The separate passage of the arterial and venous vessels is clearly visible at this magnification
- In one piece
- On a stand with a green base
- H 45 cm W 48 cm D 16 cm
- Weight: 2.65 kg