

Nursing Catalog



**Nursing Clinical Lab
as per
INC Guidelines**



SEM TRAINERS & SYSTEMS

WHERE TIME MOVES AHEAD TO KEEP PACE WITH KNOWLEDGE

SEM - Scientific Educative Methods in Science, Engineering & Medicine

Researchers Designers & Consultants
(Simulations & Training Methodologies)

A center for the dissemination of
simulation training methodologies in
Science, Engineering & Medicine

Think Tank and Consultants
in Medical Clinical Skills Laboratories

 Shop No. 7, Saibaba Apartment,
Opposite Main Post Office, Halar Road,
Valsad-396001, Gujarat.

 www.semtrainers.com

 semtrainersvalsad@gmail.com,
sem@semtrainers.com

 88495 63724 / 98791 03905

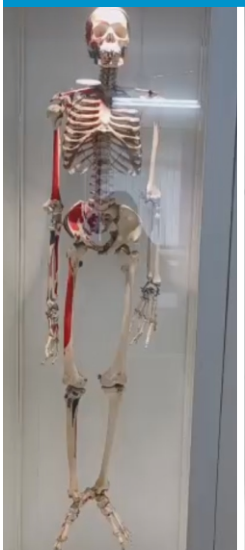
 02632-356286

 **Pune** : 85302 03623 / 88050 27511

 **Mumbai** : 98220 02296

 **Gujarat** : 97256 80788 / 78629 28520

FOLLOW US ON:     



INDEX

Nursing Foundation & Medical Surgical Nursing Laboratory			
Sr. No.	Model No.	Categories	Page No.
01	SB23541 L	Simple Simon® (Male) - Light	02
02	SB23540 L	Simple Susie® (Female) - Light	03
03	PP-AM-100M	Prestan Adult CPR Training Manikin	04
04	7010	Training arm for intravenous injection and infusion	05
05	LF00961	Intramuscular Inj Sim	06
06	LF01008	Intradermal Injection Simulator	07
07	LF00843	Male/female Catheter Trainer	08
08	LF00857	MALE&FEMALE CATH SIMULATRS	09
09	LF00906	Ostomy Care Simulator	10
10	LF01174	Ng Tube&trach Skills Sim	11
11	LF03770	Chest Tube Manikin	12
12	LF01142	Auscultation Trainer and Smartscope	13
Advanced Nursing Laboratory			
13	LF01121	Arm Iv Advanced Light	15
14	LF00995EX	Arterial Puncture Arm	16
15	LF01087	Central Venous Cannul	17
16	LF03670 A	Interactive ECG Simulator	18
17	LF03699	Airway Larry W/stand	19
18	SB47847	AED Practi-Trainer - Bilingual	20
19	LF03890	CRiSis™ Manikin	21
Pre- Clinical Sciences Laboratory			
A- Realia, Specimens and Equipments			
20	2960	Didactic skeleton "Oscar"	23
21	3020	Skeleton, unassembled	24
B- Models			
22	B160	Muscular Figure, 30 Parts, 85 cm	25
23	B109	Sexless torso, 12 parts	26
24	J213	Skin block model	27
25	G205	Heart with bypass	28
26	G207	Heart model, 2 part, with conducting system	29
27	F210	Eye model, 4 times life size, 6 parts	30
28	E210	Ear, 3 times life size, 4 parts	31
29	C918	Anatomical brain model, life-size, 5 parts	32
30	G115	Lungs, Heart and Pharynx, 7 parts	33
31	G121	Larynx Model, 2 Times enlarged, 5 Parts	34
32	K221	Human digestive system, 5 parts	35
33	K215	Stomach, life size, 2 parts	36

Sr. No.	Model No.	Categories	Page No.
34	H210	Female Pelvis, life size, 3-part	37
35	L262	Uterus with diseases	38
36	H211	Male Pelvis, life size, 4-part	39
37	K132	Urinary System, 5 parts	40
38	K260	Kidney model, 2 times life size	41
39	4552	Knee joint with ligaments with stand	42
40	4553	Hip joint with ligaments with stand	42
41	4556	Elbow joint with ligaments with stand	43
42	4550	Shoulder joint with ligament with stand	43
43	D217	Oral hygiene model 1.5 times life size	44
C- Working Models			
44	SB48204U	Pumping Heart Model	46
45	G115	Lungs, Heart and Larynx	46
46	K111	Kidney Section with Renal Nephron and Renal Corpuscle	47
47	4661	Shoulder Joint	47
48	4662	Knee Joint	48
49	4663	Hip Joint	48
MIDWIFERY & CHILD HEALTH NURSING LABORATORY			
50	L204	Pregnancy Model Set, 9 models	49
51	SB38758 L	Total Childbirth Education Station	50
52	4054	Female pelvis with sacrum	51
53	4519	Fetus skull, 30. week	51
54	LF00980	Adv Breast Exam Simulator	52
55	101-340	Neonatal Resuscitation Trainer	53
56	SB34425 L	Newborn Baby Dolls	54
57	7010	Training arm for intravenous	55
58	R10071	Model of Placenta & Umbilical Cord	56
59	LF00952	Injection Training Models	56
60	LF00856	Female Catheterization Simulator	57
61	PP-AM-100M	Prestan Adult CPR Training	58
62	SB28796 L	ZOE Gynecologic Simulator	59
63	L261	Uterus model	60
64	L45	Condom Training model, white skin colour	60

INDEX

Child Health Nursing

Sr. No.	Model No.	Categories	Page No.
66	SB22746 L	Pediatric Care Simulator - 5-Year-Old.	62
67	LF03609	Child Airway Management Trainer with Stand	63
68	LF03623	Infant Airway Management Trainer with Stand	64
69	160-8551	NG Trainer	64
70	LF00999	Paediatric Head	65
71	LF01201	Infant Auscultation Trainer with Airway Management	66
72	LF00958	Pediatric Arm - Light	67

Advanced Nursing Laboratory

01	LF04300	TERi™ Androgynous Geriatric Patient Care Trainer	69
02	LF04301	TERi™ Androgynous Geriatric Patient Skills Trainer	70
03	LF04302	TERi™ Androgynous Geriatric Patient Simulator	70
04	LF04001	GERi™ Complete Nursing Skills Manikin - Light	71
05	101-8001	SMART STAT with iPad	72
06	SQqubeZeroEX	SKILLQUBE qubeZERO	75
07	LF03617	Deluxe Child CRiSi™ Manikin with ECG Simulator	76
08	101-8010	Stat Baby Advanced	77
09	LF01421	Charlie Nrp Baby	78
10	LF03637	Pals Iv Arm	80
11	SB51891 L	Clinical Chloe™ Advanced Patient Care Simulator - Light	81
12	800-6701	TRAUMA MANIKIN MOULAGE KIT	82
13	800-818	EMT Casualty Simulation Kit	83
14	150-1800	Tension Pneumothorax Simulator	84
15	SB18636	Chester Chest™ with Peripheral Port Access Arm	85
16	SB20132	Peter Picc Line	86
17	LF03769	Pericardiocentesis	87
18	LF01036	Spinal Injection	88
19	LF01035	Infant Cathtrzn Trainer	89
20	LF00957	Enema Simulator	90
21	LF01028	Suture and Stapling Practice Arm	91
22	LF01034	Suture Practice Leg	92

Sr. No.	Model No.	Categories	Page No.
23	LF01047	Pediatric Suture Head Kit	93
24	LF00690	EPISIOTOMY SUTURE SIM/ST3	94
25	LF01042	Suture Kit Light	95
26	LF00929	Surgical Sally/bandaging	96
27	LF01005	First Aid Arm	97
28	LF00984	Breast Examination Siml	98
29	LF01068	Cervical Dilatation and Effacement Simulators	99
30	LF01235	Exam Pelvic/gyn Advanced	100
31	160-1912	IUD Trainer	101
32	LF00042	Basic Lucy	102
33	SB48760(L)	Noelle Maternal Birth Lght	103
34	SB50848 L	Susie Ob Advanced Light	104
35	PP-AM-2000-MS	Prestan Professional Adult Series 2000 ManikinS	105
36	100-2163	SANI CHILD VTA CPR MANIKIN	106
37	100-2164	SANI BABY VTA CPR MANIKIN	106
38	100-1602	Adult Choking Manikin With Carry Bag	107
39	100-1640	Infant Choking Manikin With Carry Bag	107
40	LF01129	Deluxe Blood Pressure Simulator with Speaker System	108



PLANNING A CLINICAL SKILLS LAB

With Over 3000+ customers, using over 3500 Manikins and Medical Simulators in more than 250+ Cities and Towns across all over India covering 10,000+ models, Manikins, Simulators, from over 10 leading International USA and European, manufacturers from under one source.

SEM Trainers & Systems will reach out to you.


400+
Experience


320+
Clinical Labs


3000+
Customers


250+
Cities


10000+
Models


10+
Manufacturers



SEM TRAINERS & SYSTEMS
☎ 8849563724 | 9879103905

Shop No.7, Saibaba Apartment, Opp. Main Post Office,
Halar Road, Valsad-396001, Gujarat.

Partial List of Skills Lab Set Up All India

- CARE India Patna Bihar.
- Mahatma Gandhi Institute of Nursing science Wardha.
- Armed Forces Medical College Pune.
- Kamineni Institute of Medical Sciences Hyderabad.
- Kokilaben Dhirubhai Ambani Hospital Mumbai.
- Jawaharlal Medical College Belgaum.
- BLDE University Shri B M Patil Medical College Bijapur.
- Symbiosis Center For Healthcare Pune.
- Era 's Medical College Lucknow.
- Army school of Nursing Guwahati.
- Vinoba Bhave Hospital Silvasa.
- Sewarural Jhagadiya Gujarat.
- SDM Medical College Dharwar.
- D Y Patil Hospital and Medical Research Center Kolhapur.
- Apollo Hospital Bilaspur.
- Maniba Bhula institute of Nursing Science Bardoli.
- Krishna Institute of Nursing Sciences Karad.
- Government K.G Hospital for women and children Chennai.
- Fedearation of Obstetrics & Gynecological Societies (60 Medical colleges) of India (FOGSI).
- Everon Skills Development Chennai Tamil Nadu.
- State Family Welfare Bureau Directorate of Health Services (77 Civil Hospitals & ZP) Government of Maharashtra.
- AIIMS Patna
- KLE Medical College Belgaum
- Directorate of Health Services Odhisa.

SEM Understands

- The challenges involved in saving life in hospitals or disaster sites.
- Saving life begins with the right knowledge and appropriate training methods. Saving life begins with appropriate learning and training equipment's.
- The supreme importance of quality and excellence
- The prime importance of affordability to all.
- Combined excellence in quality, appropriate training equipment's & right affordability
- The best and most comprehensive range of appropriate training equipment's.
- Highest world class quality ISO-DIN 9001 Quality Certification Standard Worlddidac Quality Charter
- Lowest Costs - Factory to your door - delivery anywhere in India
- Highest medical safety, portability, durability, medical fidelity
- Certified by world renowned agencies to be “within limits for toxic and carcinogenic contaminations and emissions.”

Be extra careful of Foreign Companies dumping 2nd hand used Manikins in India

- 1: Can be contaminated with bacterial infectious loads
- 2: Leeching of Toxic, flammable additives accelerated in age hardened rubbers plastics
- 3: Manikins are never fumigated sterilized at point of import into India
- 4: Manikins are made from various Plastics Rubbers. Subject to brittle age hardening
- 5: Life of Manikins is very residual due to brittle age hardening. (1-2 years)
- 6: No Spares and parts will ever be available
- 7: Skills on Manikins may not reflect BEST CURRENT MEDICAL PRACTICES
- 9: Companies DO NOT DECLARE items to be 2nd Hand. Practice downright DISHONESTY
- 8: You become a VICTIM of STRUCTURED OBSOLESCENCE for Commercial gain only 11: Dishonesty destroys all SANCTITY in the chain of Learning-Training
- 10: When Commercial Interests are paramount, DISHONESTY becomes the Foundation
- 12: Any Learning-Training is a NOBLE venture particularly MEDICAL EDUCATION
- 13: In plain terms you are cheated. "Taken for a ride"

**Do not get carried away by Cheap low Prices, Huge Discounts,
Examine issues of Quality, Overall Life Utility Cycle of Manikin,
Durability, Accuracy and Simplicity of Use**

DO NOT GET CHEATED: GET CORRECT GUIDANCE

**From:
SEM TRAINERS & SYSTEMS**



SEM TRAINERS & SYSTEMS

☎ 8849563724 | 9879103905

Shop No.7, Saibaba Apartment, Opp. Main Post Office,
Halar Road, Valsad-396001, Gujarat.



INC Skill lab Guidelines

I. NURSING FOUNDATION & MEDICAL SURGICAL NURSING LABORATORY

This laboratory will also have facilities for practice of Advanced Nursing.

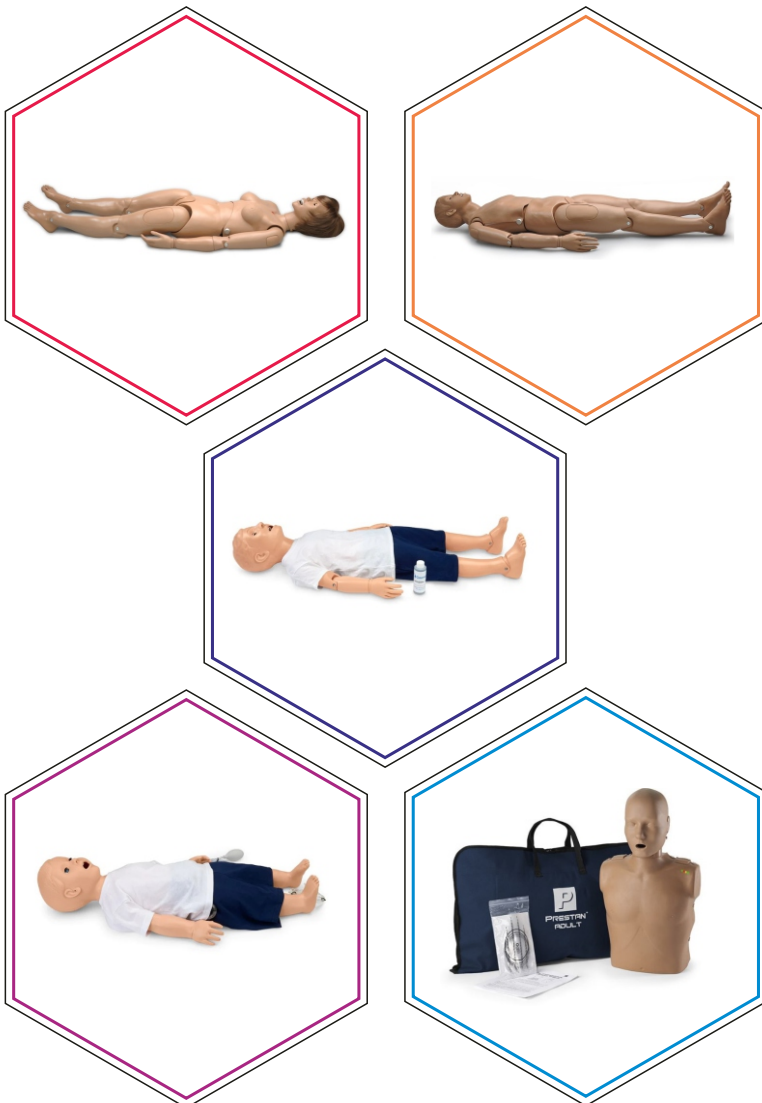
A. Manikins/Simulators and Equipments

S.No.	Items	Quantity
1.	Manikins/Simulators for demonstrating nursing procedures	
	Adult male	2
	Adult female	5
	CPR	1
	IV arm (trainer)	2
	IM injection trainer	2
	ID injection trainer	2
	Catheterization trainer (male/female)	1 each
	Ostomycare simulator (Colostomy/Gastrostomy)	1
	Airway suction trainer	2
	Chest tube manikin	1
	Lung examination trainer/auscultation trainer	1
	Nasogastric tube feeding trainer/simulator	1
2.	Furniture	
	Patient cots-Adult	10
	Bed side locker	10
	Stool/Chair	10
3.	Trays of different sizes (plastic)	
	- 24" × 16"	10
	- 14" × 10"	10
	- 11" × 9"	6
	- 8" × 5"	6
4.	Trays with cover (stainless steel)	
	- 24" × 16"	2
	- 14" × 10"	6
	- 11" × 9"	6
	- 8" × 5"	10

Nursing Foundation & Medical Surgical Nursing Laboratory

Manikins for Demonstrating Nursing Procedure :

Description	Qty	Model No.	Item Name
Adult Male	2	SB23541 L	Simple Simon Light
Adult Female	5	SB23540 L	Simple Susie Light Skin
CPR	1	Prestan	Prestan Adult CPR Manikin
IV Arm (Trainer)	2	7010	Training arm for intravenous injection and infusion
IM Injection Trainer	2	LF00961	Intramuscular Inj Sim
ID Injection Trainer	2	LF01008	Simulator Intrderml Inject
Catheterization Trainer (Male/Female)	1	LF00843	Male/female Catheter Trainer or
		LF00857	MALE&FEMALE CATH SIMULATRS
Ostomycare Simulator (Colostomy/Gastrostomy)	1	LF00906	Ostomy Care Simulator
Airway Suction Trainer	2	LF01174	Ng Tube&trach Skills Sim
Nasogastric Tube Feeding Trainer/Simulator	1		
Chest Tube Manikin	1	LF03770	Chest Tube Manikin
Lung Examination Trainer/Auscultation Trainer	1	LF01142	Auscult Trainer W/scope





Simple Simon® (Male) - Light

Model No. SB23541(L) Sh. wt. 34 lbs.



- Simulate a number of exercises from transverse colostomy management to tracheotomy, from intramuscular injection to ophthalmological treatment
- Joints are strong and movements lifelike, even to the extent of permitting pronation and supination of the forearm
- Comes without internal tanks
- Genitals are not interchangeable

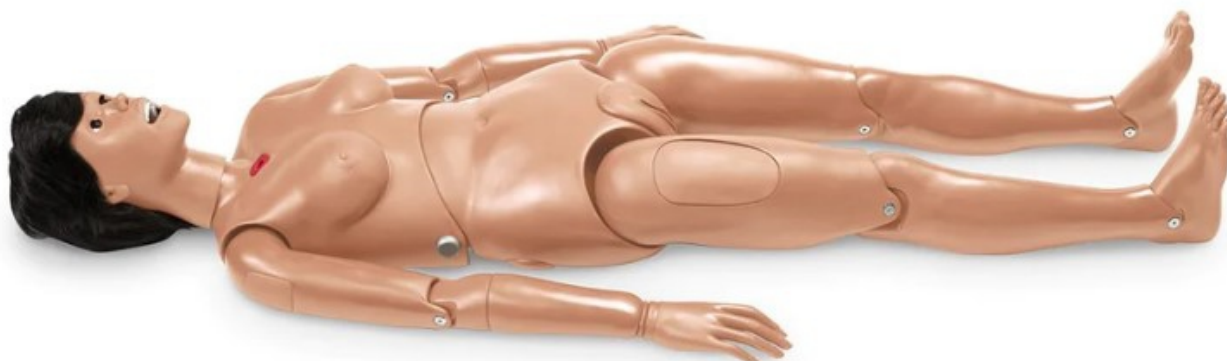
The manikin offers these additional features:

- Articulating head, jaw, elbows, wrists, ankles, and knees
- Bathing and bandaging
- Enema administration
- Eyes open and close
- Instruction manual
- Intramuscular injection
- Nasal and oral tube placement
- NG and OG tube feeding and gastric suction
- Opening for gastrostomy
- Ophthalmic exercises
- Catheterization exercises
- Otic drops and irrigation
- Soft, realistic face skin, hands, feet, fingers, and toes
- Wig for hair care exercises
- Tracheotomy placement
- Transverse colostomy, ileostomy, and suprapubic stomas to practice irrigation
- Upper and lower dentures for oral hygiene
- Meets OBRA requirements



Simple Susie® (Female) - Light

Model No. SB23540 L



- Simulate a number of exercises from transverse colostomy management to tracheotomy, from intramuscular injection to ophthalmological treatment
- Joints are strong and movements lifelike, even to the extent of permitting pronation and supination of the forearm
- Comes without internal tanks
- Genitals are not interchangeable

The manikin offers these additional features:

- Articulating head, jaw, elbows, wrists, ankles, and knees
- Bathing and bandaging
- Enema administration
- Eyes open and close
- Instruction manual
- Intramuscular injection
- Nasal and oral tube placement
- NG and OG tube feeding and gastric suction
- Opening for gastrostomy
- Carry bag
- Ophthalmic exercises
- Catheterization exercises
- Otic drops and irrigation
- Soft, realistic face skin, hands, feet, fingers, and toes
- Wig for hair care exercises
- Tracheotomy placement
- Transverse colostomy, ileostomy, and suprapubic stomas to practice irrigation
- Upper and lower dentures for oral hygiene
- Vaginal douching and Pap smear exercise
- Meets OBRA requirements



Prestan Adult CPR Training Manikin

Model No. : PP-AM-100M



Professional-quality manikin at a fraction of the cost! Comprehensive design allows for practice of Heimlich maneuver and abdominal thrusts, as well as CPR and mouth-to-mouth breathing. Realistic anatomical markings (Adam's apple, carotid arteries, navel, rib cage, chest notch) make it easy to learn correct hand placement for checking pulse, performing chest compressions, and more.

Prestan Professional CPR-AED Manikins are now approved for use by American Heart Association for the American Red Cross layperson and professional rescuer training courses.

Realistic to the eye and the touch, the Prestan Adult Professional Manikin is unlike any other on the market. Prestan manikins are uniquely designed as a clamshell and accommodates an easy-to-insert face shield/lung bag.

The Prestan manikins are equipped to be used with ANY AED trainer on the market today. The manikins come in three skin tones: Light, medium, and dark, and come with or without the CPR Monitor. They come individually, in a convenient four pack, or in a "Family Pack," consisting of an adult manikin, a child manikin, and an infant manikin.

Compression Clicker sound to give feedback and Compression Depth

2019 AHA Compliant with CPR Rate Monitor: Prestan's revolutionary new CPR Rate Monitor allows for instant feedback to both instructor and student regarding the rate of chest compression. This allows each student to gauge their rate of compressions on their own as well as allowing the instructor to monitor several students quickly and easily.

Product Dimensions and Weight:

- Weight: 7 lbs.
- Dimensions: 7" x 14" x 23"

Contents:

- Prestan Adult Manikin
- (OPTIONAL CPR Monitor)
- 10 Lung Bags
- Instruction Sheet
- 1 Nylon Carrying Case



- Red light: 1 to 59 compressions per minute
- Yellow light: 60 to fewer than 79 compressions per minute
- One green light: 80 to 99 compressions per minute
- Two green lights: 100 compressions per minute



Training arm for intravenous injection and infusion

Model No. 7010 (Erler Zimmer, Germany)



- The high-quality Erler Zimmer injection arm offers a wide range of application possibilities for professional and realistic training of blood collection, ideally suited for the training and further education of medical personnel.
- The injection arm is very lifelike, especially in terms of the puncture feeling, requires hardly any care and has skin and veins that can be changed easily and quickly.
- This unbeatable value for money model is particularly suitable for group training. The wear parts are easily changed by the user and cost a fraction of comparable competitor products, so you can let your practitioners practice as often as they like.
- 5 year warranty, manufactured in Germany.

Ideally suited for:

- Intravenous injection
- Intravenous infusion
- Blood collection
- Palpation of veins
- Placement of a venous access

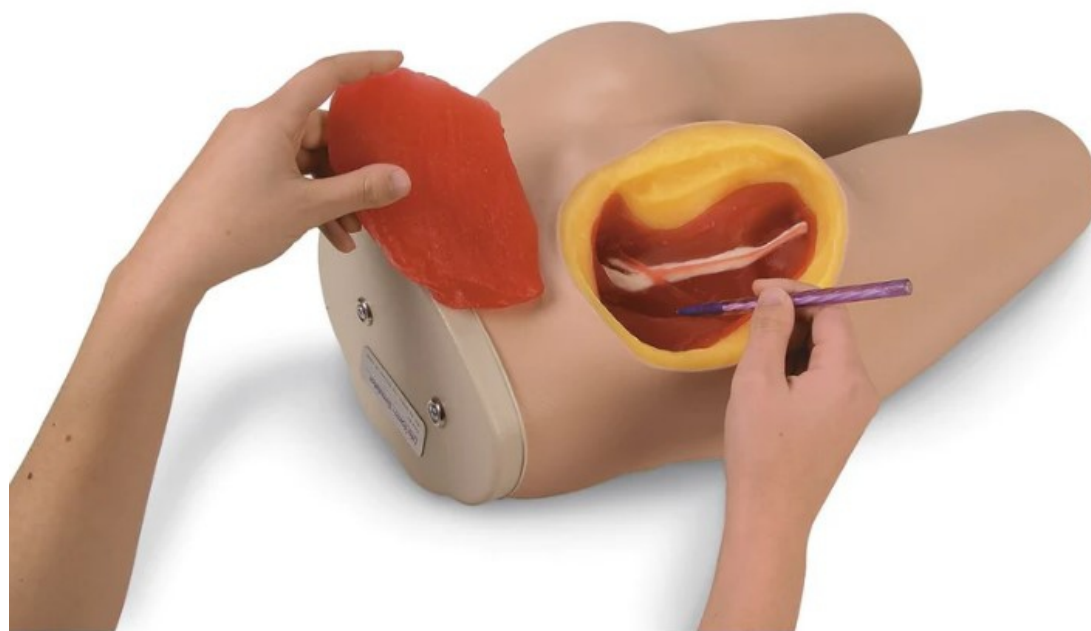
Scope of delivery:

- 1x adult injection arm incl. skin and venous system
- 1x arm support
- 4x fluid container
- 1x 250ml artificial blood
- 1x stand for artificial blood
- 1x product manual



Intramuscular Injection Simulator

Model No. : LF00961U Sh. wt. 18 lbs.



- Simulated bony structure is embedded in the torso and represents the superior end of the femur, or greater trochanter, the posterior superior and anterior superior iliac spines, and the sacrum
- Bony structure provides palpable anatomical landmarks to identify proper injection sites
- Section of the upper, outer quadrant of the left gluteal area is cut away to visualize the underlying structures
- Gluteus medius and gluteus maximus muscles, sciatic nerve, and vascular structures are clearly shown
- 3 types of intramuscular injections can be taught and practiced on this simulator: dorsogluteal, ventrogluteal, and vastus lateralis injections
- Extremely realistic skin and muscle textures, as well as bone shape and position, closely resemble a live patient
- Perforation of the tissue with a needle duplicates the sensation of administering an actual injection
- Includes instruction manual, supply of syringes, and hard carry case
- 5-year warranty

Consumables & replacement parts Model No.

Replacement Muscle Sh. wt. 0.50 lbs.

LF00963U



SEM TRAINERS & SYSTEMS

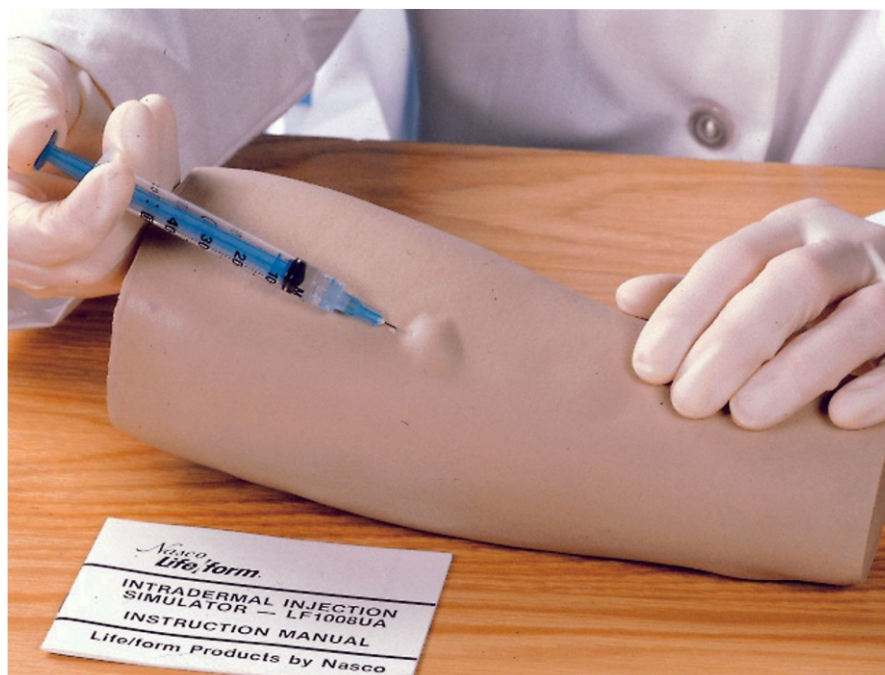
8849563724 | 9879103905

Shop No.7, Saibaba Apartment, Opp. Main Post Office,
Halar Road, Valsad-396001, Gujarat.



Intradermal Injection Simulator

Model No. : LF01008U Light Sh. wt. 2.25 lbs.



- Practice intradermal injections safely and conveniently with the Life/form® Intradermal Injection Simulator
- Unit consists of a casting molded from a real forearm from the wrist to just below the elbow
- Life/form® soft vinyl skin provides realistic feel and appearance to ensure a realistic training experience
- 8 sites for practicing intracutaneous injections
- If fluid is properly injected, a characteristic skin welt will form
- Welt is removed by withdrawing the fluid after practice
- Each site is reusable by dozens of students
- Includes arm section with 8 injection sites, 2-oz. bottle of liquid skin repair, syringe, instruction manual, and storage box
- Included intradermal sealant (LF01009U) will extend the life of skin; however, skin is not replaceable and the simulator will eventually need replacement
- 13 in. x 11 in. x 5 in.
- 5-year warranty

Consumables & replacement parts Model No.

Intradermal Sealant 2-oz. bottle. Sh. wt. 0.25 lbs.

LF01009U





Male & Female Urinary Catheterization Trainer

Model No. : LF00843U Sh. wt. 19 lbs.



New and improved urinary catheterization trainer with soft, realistic material, male genital insert with foreskin, female genital inserts, urinary and suprapubic catheterization

capabilities, and rectal suppository and enema features included.

• Includes:

- o Soft Female Genital (1)
- o Soft Male Genital (1)
- o Simulator Lubricant 2 oz. (1)
- o 16 French Foley Silicone Catheter
- o Genital Housing Unit (1)
- o 1 qt. Simulated urine
- o Reusable Fluid Supply Bag
- o Bladders (3)
- o Foreskins (3)
- o Suprapubic Skin (3)
- o Syringe (1)
- o Baby Powder (1)
- o Hard carry case
- Fluid supply stand not included
- 5-year warranty



Male & Female Catheterization Simulator Set

Model No. : LF00857U Sh. wt. 33 lbs.



- A lubricated catheter can be inserted in the urethral orifice, passed through the urethra, and into the bladder
- Student will feel normal restrictions caused by the mucosal folds, bulbous urethra, and internal urethral sphincter, just prior to entrance into the bladder
- Teaches proper positioning and movement of the penis to allow the catheter to pass easily
- Simulator is the lower torso of a middle-aged woman with thighs abducted for proper position during catheterization
- Includes a bladder reservoir, patient urethra, and a valve simulating the internal urethral sphincter
- Normal feeling of resistance and pressure is experienced as a catheter is passed through the urethra, past the sphincter, and into the bladder
- When the catheter enters the bladder, artificial urine (water) will flow from the catheter
- External genitalia and perineum are molded in lifelike form
- Labia minora can be spread apart naturally to reveal the clitoris, urethral opening, and vaginal introitus
- Includes lubricant, silicone catheter, instruction manual, and hard carry case
- 5-year warranty

Consumables & replacement parts	Model No.	Consumables & replacement parts	Model No.
Foley Catheter, Silicone Each. Sh. wt. 0.25 lbs. LF01127U • 16 FR 5 cc Pkg. of 10. Sh. wt. 0.63 lbs. LF01128U		Nasco Cleaner Sh. wt. 0.88 lbs. LF09919U • Use to remove stubborn stains from simulators and trainers • 12-oz. bottle	
Fluid Administration Set Sh. wt. 0.25 lbs. LF01098U • With special adapter for Male and Female Catheterization Simulators • Includes fluid bag with tubing and a fitting		Catheter Obstruction Tool Sh. wt. 0.38 lbs. LF00844U • Use to clear any obstructions within the urethra • Comes in a zipper closure bag with lubrication and instructions	
Fluid Supply Stand Sh. wt. 4 lbs. LF01022U • 5 in. x 8 in. base, 5/16 in. steel hooked rod			
Lubricant Kit Sh. wt. 0.88 lbs. LF00985U • 2-oz. bottle • Pkg. of 6			



Ostomy Care Simulator

Model No. : LF00906 Light Sh. wt. 24 lbs.



- Ideal for demonstration and practice for several procedures
- Anatomy of both a colostomy and ileostomy are carefully reproduced to provide lifelike functions and appearance
- Dilation of the stomas can be demonstrated and practiced, along with application of postoperative and permanent ostomy bags
- Colostomy can be irrigated
- Syringes are inserted through ports in the back of the simulator; 1 pumps the ileostomy with clear water or water tinted for exact realism, and the other syringe pumps synthetic stool to the colostomy
- Syringes are included to pump materials through the unit to provide drainage and excretion at the ileostomy and colostomy
- Consistency of the stool can be varied by using water to thin the material, and most of the stool can be salvaged and reused
- Soft, pliable material is used for the stomas in order to achieve a most realistic tactile sensation
- Includes a supply of simulated stool, instruction manual, and hard carry case
- 5-year warranty

Consumables & replacement parts Model No.

Adult Ostomy Kit

LF00897U

- 2 syringes without needles
- 4-oz. jar of simulated stool
- 4 1/4-oz. tube of lubricant
- 1 vinyl glove Sh. wt. 1.25 lbs.

Adult Ostomy Bag

LF00896U

- Closed pouch Sh. wt. 0.06 lbs.

Simulated Stool

LF00962U

- Sh. wt. 0.63 lbs.



NG Tube & Trach Skills Simulator

Model No. : LF01174U Sh. wt. 24 lbs.

- Realistic landmarks, trachea, esophagus, lungs, and stomach
- Thickener can be mixed with water to simulate mucous-like fluids of a real patient
- Fluid can be added for realistic tracheostomy care and suctioning
- Allows for the practice of dressing changes and cuff inflation
- Realistic procedures include NG tube care, including insertion, irrigation, and removal; gastric lavage and gavage; feeding tube insertion and removal with the ability to practice feeding; nasoenteric and esophageal tube care; oropharyngeal and nasopharyngeal care; and tracheostomy tube care
- Intubation using a laryngoscope blade and size 6.0 ET tube may also be practiced
- Designed to use size 6 tracheostomy tube, a size 6.0 mm ET tube, and a size 6 NG tube
- Includes spray-pump lubricant, a packet of thickener, instruction manual, and hard carry case
- Simulator does NOT include tracheostomy, ET, or NG tubes
- 5-year warranty



Consumables & replacement parts	Model No.
Replacement Lungs Sh. wt. 3 lbs.	LF01174(A)U
Replacement Stomach Sh. wt. 0.19 lbs.	LF01174(B)U



Chest Tube Manikin

Model No. : LF03770 Light Sh. wt. 30 lbs.



- Right side of the manikin has 2 cut-away viewing areas to provide awareness of the anatomical relationships between the skin surface, musculature, ribs, and lungs
- Left side has a pressurized tension pneumothorax site to relieve air that has accumulated within the pleural space and is restricting lung inflation
- Also a site where chest tubes may be surgically placed to treat pleural effusion by draining fluids from the pleural space
- Fluid color, volume, and viscosity can be varied
- Perfect for teaching the concepts and mechanics of closed water-seal drainage systems like "Pleur-Evac" type units
- Includes 2 visual sites for chest tube maintenance, 5 replaceable surgical chest tube sites, 5 replaceable pneumothorax chest pads, instruction manual, and hard carry case
- Chest tubes or water-seal drainage system not included
- 5-year warranty

Consumables & replacement parts	Model No.
Surgical Skin Pads • Rotating pad allows multiple cuts to be made • Pkg. of 5 Sh. wt. 0.94 lbs.	LF03771U
Subcutaneous Surgical Pads • Pkg. of 5 Sh. wt. 1.25 lbs.	LF03772U
Pneumothorax Chest Pads • Pad allows multiple needle sticks • Pkg. of 5 Sh. wt. 0.56 lbs.	LF03773U
Simulated Pericardium • Pkg. of 10 Sh. wt. 0.88 lbs.	LF03768U
Replacement Chest Tube Reservoir Bags Sh. wt. 0.25 lbs.	LF03778U
Thickener Sh. wt. 0.31 lbs.	LF03774U
Blood Powder Sh. wt. 0.19 lbs.	LF03775U
Nasco Cleaner Sh. wt. 0.88 lbs.	LF09919U



Auscultation Trainer and SmartScope™

Model No. LF01142 Sh. wt. 24 lbs.



- Instructor selects from a menu of heart and lung conditions by wireless remote control
- No visible auscultation sites
- Palpate to identify correct auscultation locations
- Diagnosis of the condition selected by the instructor can be made by comparing variations in sounds occurring at different sites
- Lung sounds located at 5 anterior, 10 posterior, and 2 midaxillary locations
- Heart sounds at 6 anterior sites
- For a list of lung and heart conditions, visit our website
- One remote control will operate multiple sets of SmartScopes™ and/or trainers simultaneously within 100 ft. range
- Listen to the sounds by either using headpieces on SmartScope™ or by connecting to an amplifier/speaker (not included) for group instruction
- Includes trainer, 1 remote control with LCD display, 1 SmartScope™ with single- and dual-user headpieces, and hard carry case
- Requires 2 AA and 2 AAA batteries (included)
- 5-year warranty

Consumables & replacement parts

Model No.

Auscultation Trainer and SmartScope™ and Amplifier/Speaker System

LF01172U

- Includes everything listed above and the speaker
- 110V
- Sh. wt. 35 lbs.



SEM TRAINERS & SYSTEMS

☎ 8849563724 | 9879103905

Shop No.7, Saibaba Apartment, Opp. Main Post Office,
Halar Road, Valsad-396001, Gujarat.

INC Skill lab Guidelines

Advanced Nursing Laboratory

S.No.	Items	Quantity
1.	Electronic ICU cot with appropriate attachments	1
2.	Advanced IV arm/Arterial puncture arm	1

9

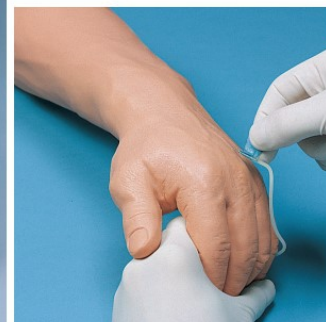
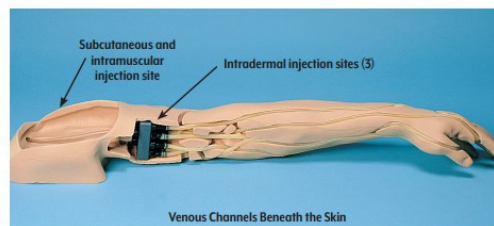
S.No.	Items	Quantity
3.	Central venous cannulation trainer	1
4.	ECG machine/ECG simulator	1
5.	Airway management simulator	1
6.	Defibrillator CPR trainer	1
7.	Hemodynamic monitoring simulation kit	2
8.	Tray sets/kits to perform advanced nursing procedures	As required
9.	Drugs, fluids, IV sets, emergency medication	As required
10.	High fidelity simulator (optional) – If other simulators are part of this, separate trainers/simulators are not required	1

Description	Qty	Model No.	Item Name
Advanced IV arm/Arterial Puncture arm	1	LF01121	Arm Iv Advanced Light
		LF00995EX	Arterial Puncture Arm
Central venous cannulation trainer	1	LF01087	Central Venous Cannul
ECG machine/ECG simulator	1	LF03670 A	Interactive Ecg Simulator
Airway management simulator	1	LF03699	Airway Larry W/stand
Defibrillator CPR trainer	1	SB47847	Aed Practi-trainer
High fidelity simulator (optional) - If other simulator are part of this, separate trainer/simulators are not required	1	LF03890	Crisis Manikan



Advanced Venipuncture and Injection Arm

Model No. : LF01121U Each. Sh. wt. 20 lbs.



This revolutionary training arm provides complete venous access for IV therapy, phlebotomy, intramuscular and intradermal injections. An extensive 8-line vascular system allows students to practice venipuncture at all primary and secondary locations, including starting IVs and introducing Over the Needle IV Catheters.

Soft, flexible fingers are molded separately with extreme attention paid to every detail - right down to the fingerprints! Flexion of the wrist helps students develop manipulation skills. The replaceable skin rolls as the veins are palpated, and a discernible "pop" is felt when entering the veins.

Key Features

- Simplified setup with one external fluid bag supplying artificial blood to all veins simultaneously
- Dorsal surface of hand includes injectable metacarpal, digital, and thumb veins. Antecubital fossa includes the median cephalic, median basilic, and median cubital veins
- Venipuncture can also be performed along the basilic, cephalic, accessory cephalic, and median antebrachial veins
- Intramuscular injections may be performed in the deltoid muscle and intradermal injection sites are located in the upper arm.
- Intramuscular injections into the deltoid muscle are enhanced by the soft, lifelike skin and by the natural bony landmarks in the region.
- Intradermal injections using distilled water will create characteristic skin welts at designated sites on the upper arm

Complete Venous Access:

- Basilic V.
- Cephalic V.
- Digital V.
- Dorsal Metacarpal V.
- Median Basilic V.
- Accessory Cephalic V.
- Extensive Venipuncture System
- Flexible Fingers and Wrist
- Intradermal Injections
- Intramuscular Injections
- Median Antebrachial V.
- Median Cephalic V.
- Median Cubital V.
- Replaceable Skin and Veins
- Thumb V.
- Five-year warranty.

Consumables & replacement parts Model No.

Replacement External Tubing Sh. wt. 0.25 lbs. LF00990U



SEM TRAINERS & SYSTEMS

☎ 8849563724 | 9879103905

Shop No.7, Saibaba Apartment, Opp. Main Post Office,
Halar Road, Valsad-396001, Gujarat.



Arterial Puncture Arm

Model No. : LF00995U Sh. wt. 17 lbs.



- Features the realism of appearance and performance necessary to provide realistic practice for trainees
- Easy to set up and use, this valuable training aid is ideal for practice and demonstration in drawing arterial blood samples for monitoring blood gases
- Identify puncture locations through palpation of the pulse at either the radial or brachial sites
- Realistic arterial pressure produces a realistic backflow of blood in the syringe, confirming proper needle location in the artery
- Periodic use of the tubing sealant provided will extend the life of each Skin/Artery Kit
- Arm has one artery tubing section installed
- Includes two 3 cc syringes with needles, fluid supply bag, 2 replacement sections of artery, 1 pint Life/form® arterial blood, tubing sealant, instruction manual, and soft carry case
- Fluid supply stand not included
- Cannot place arterial lines
- 28 in. x 13 in. x 5 in.
- 5-year warranty

Consumables & replacement parts	Model No.
Skin Replacement Kit with 3 Artery Sections Includes skin, 2 foam pads, lubricant, tubing with pulse bulb, 1 complete artery, 2 middle artery sections, and instruction manual Sh. wt. 2.25 lbs.	LF00998U
Arterial Puncture Arm Artery Replacement Only Includes 3 arteries and lubricant Sh. wt. 0.50 lbs.	LF01059U
Arterial Blood Quart Sh. wt. 0.38 lbs.	LF01004U
Nasco Cleaner Use to remove stubborn stains from simulators• 12-oz. bottle Sh. wt. 0.88 lbs.	LF09919U

Consumables & replacement parts	Model No.
Arterial Puncture Arm Injection Replacement Pad Sh. wt. 1.25 lbs.	LF00992U
Tubing Sealant Periodic use will extend the life of skin and arteries Sh. wt. 2 lbs.	LF01099U
Fluid Supply Stand 5 in. x 8 in. base, 5/16 in. steel hooked rod Sh. wt. 4 lbs.	LF01022U
Fluid Supply Bag 500 ml Sh. wt. 0.31 lbs.	LF01130U
Replacement Pulse Bulb 3 oz. Sh. wt. 0.19 lbs	LF03490U



SEM TRAINERS & SYSTEMS

8849563724 | 9879103905

Shop No.7, Saibaba Apartment, Opp. Main Post Office,
Halar Road, Valsad-396001, Gujarat.



Central Venous Cannulation Simulator

Model No. : LF01087 Sh. wt. 23 lbs.



- Designed for learning and practicing CVC techniques
- Anatomically accurate, palpation is exactly the same as on a patient
- Sternal notch, sternocleidomastoid, clavicle, and other supporting features are present
- Internal features include a replaceable muscle and bone section, subclavian, internal jugular, external jugular, and carotid
- Use of a Swan-Ganz catheter is possible
- Neck of the simulator is positioned to the left, making landmark identity quite easy visually
- Sternal notch "sinks" 1-1.5 cm when palpated
- Accurate external and internal landmarks
- Includes fluid supply bags, replaceable skin, needles, 1 qt. blood, instruction manual, and hard carry case
- 5-year warranty

Consumables & replacement parts	Model No.
Skin Repair Kit Extends the life of replacement skins with brush-on treatment Sh. wt. 0.50 lbs.	LF01112U
Replacement Tubing Kit Each set consists of 1 subclavian vein, 1 internal jugular vein, 1 external jugular vein, and connectors 6 sets. Sh. wt. 1.75 lbs.	LF01113U
CVC Skin Replacement Sh. wt. 3.75 lbs.	LF01079U
CVC Simulator Replacement Kit Includes skin and veins Sh. wt. 4.50 lbs.	LF01078U

Consumables & replacement parts	Model No.
CVC Simulator Bone and Muscle Replacement Kit Sh. wt. 7 lbs.	LF01093U
Vein Tubing Sealant Kit Sh. wt. 2 lbs.	LF01099U
Fluid Supply Stand 5 in. x 8 in. base, 5/16 in. steel hooked rod Sh. wt. 4 lbs.	LF01022U
Fluid Administration Set Includes fluid bag with tubing and a fitting Sh. wt. 0.25 lbs.	LF01098U
Venous Blood Quart. Sh. wt. 0.38 lbs. Gallon. Sh. wt. 0.88 lbs.	LF00845U LF00846U





Interactive ECG Simulator

Model No. LF03670 A Sh. wt. 3 lbs.



- Defibrillation shock can be delivered through manikin or simulator
- Connect defibrillator/external pacer to simulator using adapters
- Built-in circuitry allows you to defibrillate and pace directly into the ECG simulator and observe ECG rhythms through the PADS connector
- Convert feature
- Select another rhythm to run immediately after defib discharge
- Pacing can be done on any manufacturer's defibrillator
- 17 Adult/Pediatric Rhythms
- 6 Waveforms
- Battery saver feature powers-off simulator automatically when not in use



Airway Larry- Adult Airway Management Trainer with Stand

Model No. : LF03699U Sh. wt. 30 lbs.

A professionally made platform that simulates a non-anesthetized patient with realistic anatomy and landmarks. Ideal for practicing oral, digital and nasal intubation, suction techniques and proper cuff inflation. Suitable for both introductory classes and advanced students.

Key Features:

- Learn correct oral, digital and nasal intubation as well as E.T., E.O.A., P.T.L., L.M.A., E.G.T.A., Combitube® and King System insertion
- Allows for practice on correct suction and cuff inflation techniques
- Realistic jaw thrust technique and Sellick maneuver instruction
- Manual carotid pulse
- Bifurcated lungs
- Includes carrying case and spray lubricant



Realistic Anatomy and Landmarks including:

- Teeth
- Tongue
- Oral and nasal pharynx
- Larynx
- Epiglottis
- Arytenoids
- False cords
- True vocal cords
- Trachea
- Lungs
- Esophagus
- Stomach
- 5-year warranty.



AED Practi-Trainer - Bilingual

Model No. : SB47847



- This new and improved AED trainer with plug-in module has all the functions needed to teach students about AED operation - without breaking your equipment budget.
- This lightweight, value-priced trainer offers bilingual scenarios (English and Spanish), a fully functional remote control, volume adjustment and pause functions, adult and child connectors, and pads. Includes eight pre-programmed scenarios to simulate various cardiac arrest cases.
- Audible metronome paces CPR chest compressions.
- Audio port allows you to connect speakers so the entire class can hear scenarios as they play out - extending training even while they wait.
- Plug-in design allows for easy upgrades and language changes. Comes in a 10-1/2 in. x 8 in. x 2-3/4 in. nylon carrying case. Base requires three "AA" batteries (not included).
- Remote control requires two "AAA" batteries (not included).
- AED trainer measures 7 in. x 5-3/4 in. x 2 in. Meets 2005 ECC guidelines.
- One-year manufacturer's warranty against defects.

INC Skill lab Guidelines

III. PRE-CLINICAL SCIENCES LABORATORY

A. Realia, Specimens and Equipments

S.No.	Items	Quantity
1.	Adult human articulated skeleton with hanging facility in a glass cupboard with locking facility	2
2.	Full set of dis-articulated adult human skeleton	2
3.	Open racks for displaying the specimen	10
4.	Anatomy dissection kit	10
5.	Microscope – monocular, binocular	10
6.	Prepared educational slides (histo-pathology)	5 sets

B. Models

S.No.	Items	Quantity
1.	Full size human body showing all muscles and arteries	2
2.	Human Torso	
	Male	2
	Female	2
3.	Skin cross section	2
4.	Heart and large blood vessels	2
5.	Heart with detachable parts on a stand	2
6.	Eye with detachable parts on a stand	2
7.	Ear with different sections	2
8.	Human brain with spinal cord	2
9.	Lungs and Trachea	2
10.	Larynx	2
11.	Digestive System	
	Stomach	2
	Small intestine	2
	Large intestine	2
	Hepatobiliary system	1

INC Skill lab Guidelines

S.No.	Items	Quantity
12.	Female Reproductive System	1
	Uterus on stand	2
	Ovaries	
	Macroscopic structure	2
	Microscopic structure	2
13.	Male Reproductive system	2
14.	Urinary System (Kidney)	
	Macroscopic structure	2
	Microscopic structure	2
15.	Joints and Ligaments	
	Wrist & Ankle	2 (1 each)
	Elbow & Knee	2 (1 each)
	Shoulder & Hip	2 (1 each)
16.	Teeth	2

C. Working Models

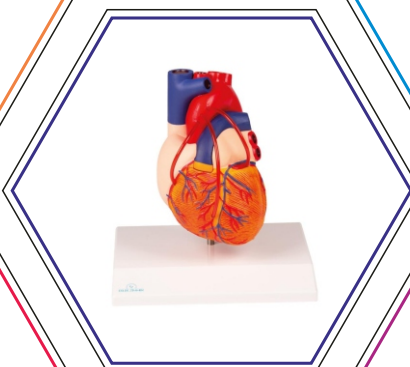
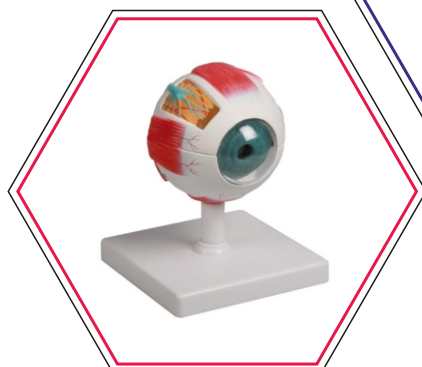
S.No.	Items	Quantity
1.	Heart	1
2.	Lungs	1
3.	Kidney	1
4.	Joints	1

D. Charts

S.No.	Items	Quantity
1.	Skeleton system	2
2.	Muscular system showing different muscles of the body	2
3.	Joints and ligaments	2
4.	Nervous system	
	Brain	2
	Spinal cord	2
5.	Cardio-vascular system	2
6.	Respiratory system	2

Pre- Clinical Sciences Laboratory

Description	Qty	Model No.	Item Name
Adult human articulated skeleton with hanging facility in a glass cupboard with locking facility	2	2960	Didactic skeleton " Oscar"
Full set of dis-articulated adult human skeleton	2	3020	Skeleton, unassembled (bone collection)
Full size human body showing all muscles and arteries	2	B160	Muscular Figure, 30 Parts, 85 cm
Human Torso		B109	Sexless torso, 12 parts
Skin cross section	2	J213	Skin block model - EZ Augmented Anatomy
Heart and large blood vessels.	2	G205	Heart with bypass
Heart with detachable parts on a stand	2	G207	Heart model, 2 part, with conducting system
Eye with detachable parts on a stand	2	F210	Eye model, 4 times life size, 6 parts - EZ Augmented Anatomy
Ear with different sections	2	E210	Ear, 3 times life size, 4 parts - EZ Augmented Anatomy
Human brain with spinal cord	2	C918	Anatomical brain model, life-size, 5 parts - EZ Augmented Anatomy
Lungs and Trachea	2	G115	Lungs, Heart and Pharynx, 7 parts
Larynx	2	G121	Larynx Model, 2 Times enlarged, 5 Parts
Digestive System		K221	Human digestive system, 5 parts
Stomach	2	K215	Stomach, life size, 2 parts
Female Reproductive System	1	H210	Female Pelvis, life size, 3-part
Uterus on stand	2	L262	Uterus with diseases
Male Reproductive system	2	H211	Male Pelvis, life size, 4-part
Urinary System (Kidney)		K132	Urinary System, 5 parts
Elbow & Knee	1	4552	Knee joint with ligaments with stand
	1	4556	Elbow joint with ligaments with stand
Shoulder & Hip	1	4553	Hip joint with ligaments with stand
	1	4550	Shoulder joint with ligaments with stand
Teeth	2	D217	Oral hygiene model 1.5 times life size



Didactic skeleton "Oscar"

Model No. 2960 (Erler Zimmer, Germany.)



First class reproduction of a male adult skeleton. This skeleton is manufactured after our strict quality regulations. The stable mounting and robust structure guarantees a long lasting quality even in intensive use.

THE FOLLOWING CHARACTERISTICS MAKE OSCAR THE RIGHT CHOICE:

- Perfect value for money
- 3 year warranty, lifelong repair service
- Final assembly by hand in Germany
- Made of durable, unbreakable plastic
- Natural skeleton size
- The teeth are manufactured separately and inserted into the jaw.
- The limbs can be removed and reattached very fast and easy using a quick fastener.
- Shoulder, hip and knee joints do have flexible rubber attachments that allow lifelike, sliding joint movements. This distinguishes Oscar pleasantly from less mobile models with metal joints.
- The about 200 bones of the skeleton correspond with real human bones in size and nearly in weight.
- The skeleton is anatomically correct and complete, it shows all important structures and foramina.
- 5-spoke roller stand, rugged, smooth-running and removable.
- The spine of the skeleton shows spinal nerves, the vertebral artery and a dorsolateral disc prolapse.

Size with stand: 178 cm, size without stand: approx. 160 cm

Weight: approx. 9 kg

Skeleton, unassembled (bone collection)

Model No. 3020 (Erler Zimmer, Germany.)



All bones in the skeleton are represented individually. Excellent casting of the skeleton of an adult male. True to life reproduction of the bone structure with all foramina, fissures and processes. The skull can be dismantled in three parts into roof of skull, base of skull and mandible. Consists of 130 parts. Not suitable for self-assembly. Supplied in storage carton.

Weight: 7.3 kg



Muscular Figure, 30 Parts, 85 cm

Model No. B160 (Erler Zimmer, Germany.)



This ½ life size high quality model represents a replica of the complete human muscular and organs anatomy. It illustrates with excellent detail the superficial and deeper muscles, tendons, ligaments, vessels and body structures. The internal organs are removable for closer examination to study the relationships among all the body structures.

The following organs can be removed:

- Brain, 2 part
- Heart, 2 part
- 2 Lungs
- Stomach
- Liver
- Pancreas, duodenum, spleen
- Intestines

Skull cap, Arms and belly cover can be removed; the following muscles can be removed:

- masseter muscle
- deltoid muscle
- biceps brachii muscle
- flexor carpi ulnaris muscle, palmaris longus muscle, flexor carpi radialis muscle
- extensor carpi ulnaris muscle, extensor digitorum muscle
- sartorius muscle
- rectus femoris muscle
- adductor longus muscle
- gluteus maximus muscle
- gluteus minimus muscle
- biceps femoris muscle, semitendinosus muscle
- gastrocnemius muscle
- soleus muscle
- tibialis anterior muscle

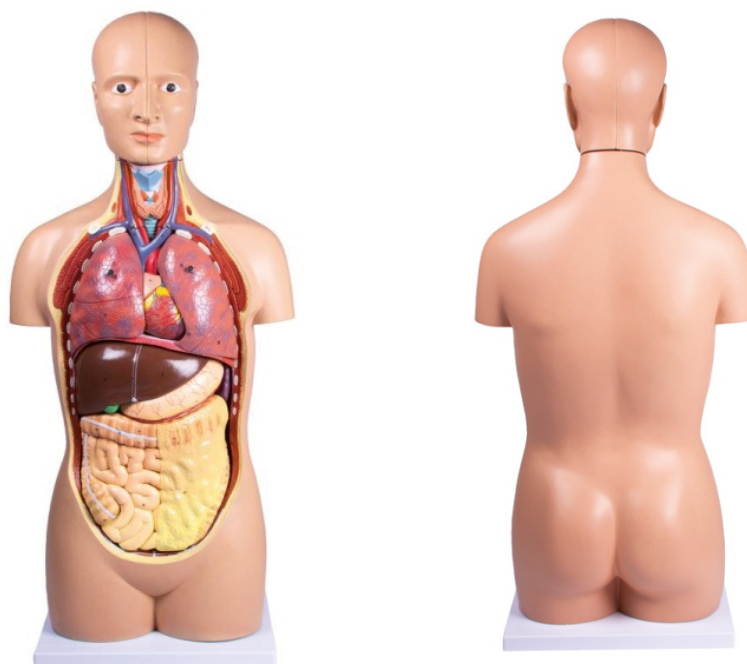
Supplied with stand.

Size: 33 x 30 x 87 cm, weight: approx. 5.3 kg



Sexless torso, 12 parts

Model No. B109 (Erler Zimmer, Germany.)



This sexless life-size torso is composed of 12 parts. Accurate in all of its detailing, this model is a useful tool to show the human anatomy

in any classroom. Structures are numbered and identified on the accompanying key-card. The head is removable and divided into two parts,

exposing the inner structure of the brain. The neck is dissected through the ventral surface to show muscular, glandular, vascular and neural

structures. The thorax and abdomen are completely open, affording an unrestricted view of the internal organs and structures.

Removable components include the following:

- Head, divided into 2 parts, showing a section of the brain and the upper respiratory tract
- Half of the brain, divided along the longitudinal fissure to expose internal structures and vessels
- Right and left lungs, showing the bronchial tree and vasculature
- Heart
- Liver with gallbladder
- Stomach
- Pancreas, duodenum and spleen with vessels and ducts
- Small and large intestine with removable window in caecal region

Mounted on base.

Size: 90 x 33 x 23 cm

Weight: approx. 9.3 kg



Skin block model - EZ Augmented Anatomy

Model No. J213 (Erler Zimmer, Germany.)



This model of a human skin in about 50 times life size shows 3 dimensional the different skin layers and anatomical structures.

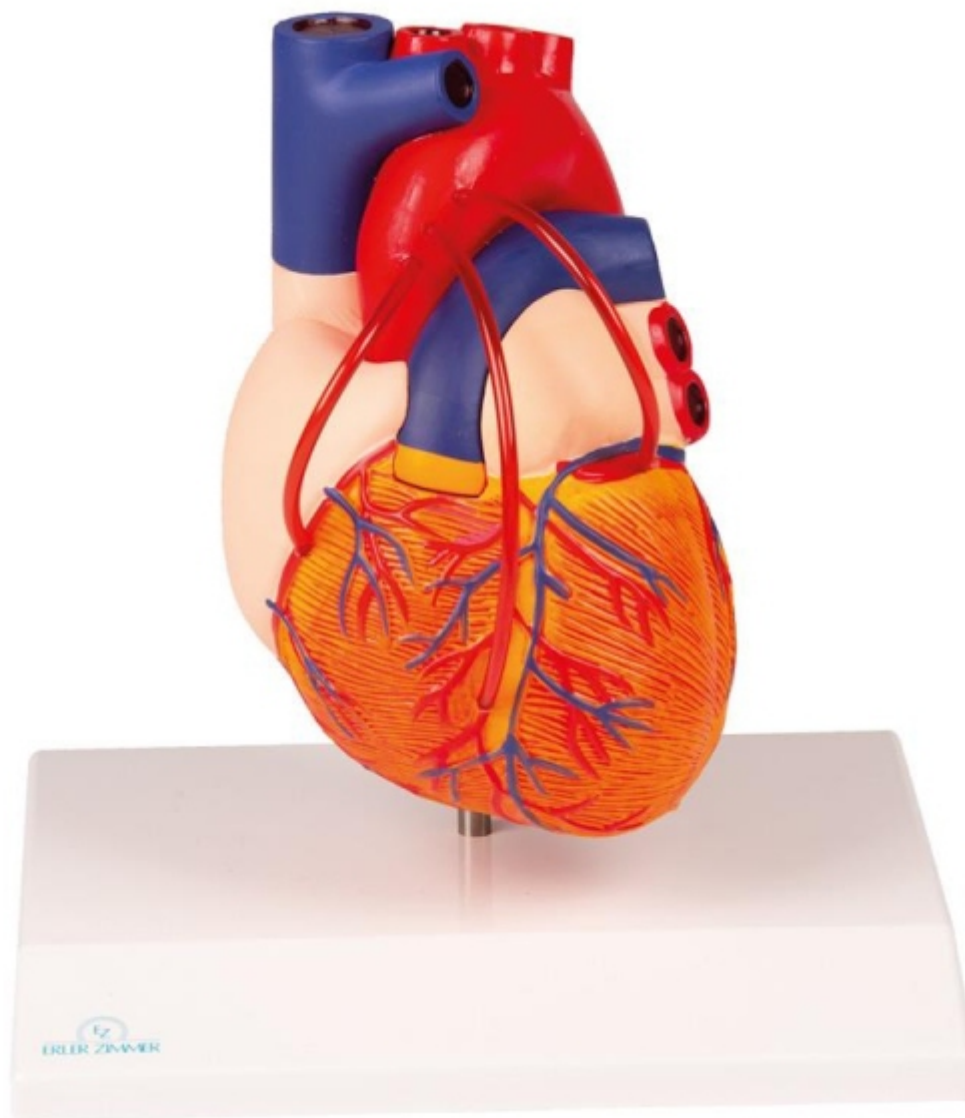
In addition to nerves and blood vessels the model shows
sweat glands,
sebaceous glands,
hair follicles,
erector muscles,
Pacinian corpuscles and much more.

Size: 20 x 10 x 20 cm, weight: 0.8 kg



Heart with bypass

Model No. G205 (Erler Zimmer, Germany.)



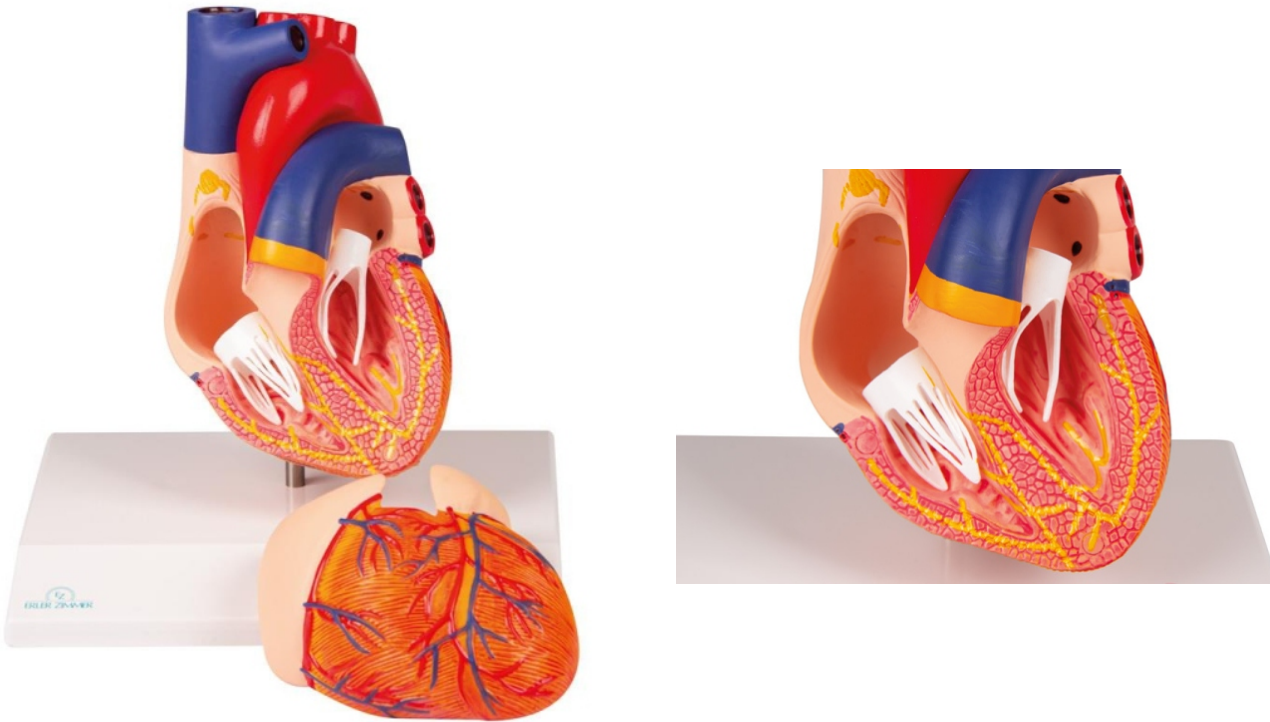
This life-size two-part model provides an extremely detailed illustration of the anatomy of the human heart with three coronary bypasses. The anterior wall can be detached to expose the inner chamber and valves. Mounted on stand.

Size: 8 x 8 x 14 cm, weight: 0.4 kg



Heart model, 2 part, with conducting system

Model No. G207 (Erler Zimmer, Germany.)



The front heart wall can be removed to show the inner structures in detail.

All important structures are present such as ventricles, atriums, aortic, mitral, pulmonary and tricuspid valves.

Heart muscle, fatty tissue, arteries and veins are painted in detail, the conducting system is marked in color.

The model is made of unbreakable plastic and removable from the stand.

Size: 8 x 8 x 14 cm , weight: 0.4 kg



Eye model, 4 times life size, 6 parts - EZ Augmented Anatomy

Model No. F210 (Erler Zimmer, Germany.)



Product information "Eye model, 4 times life size, 6 parts - EZ Augmented Anatomy"

Complex hand painted reproduction of a human eye in about 4 times life size. The model includes two halves of sclera with retina and eye muscle attachments as well as vitreous humour, lens, cornea and iris. The model has 6 parts in total. It can be removed from the stand.

Size of Eye: 10 x 10 x 12 cm, model size with stand: 12 x 12 x 15 cm, weight: 0.4 kg



Ear, 3 times life size, 4 parts EZ Augmented Anatomy

Model No. E210 (Erler Zimmer, Germany.)



This model shows the details of the external, middle and inner ear in three times life size.

The eardrum with malleus, incus and stapes can be removed.

Additional removable part is the cochlea and labyrinth with vestibular and cochlear nerves, one half of the cochlea can be removed.

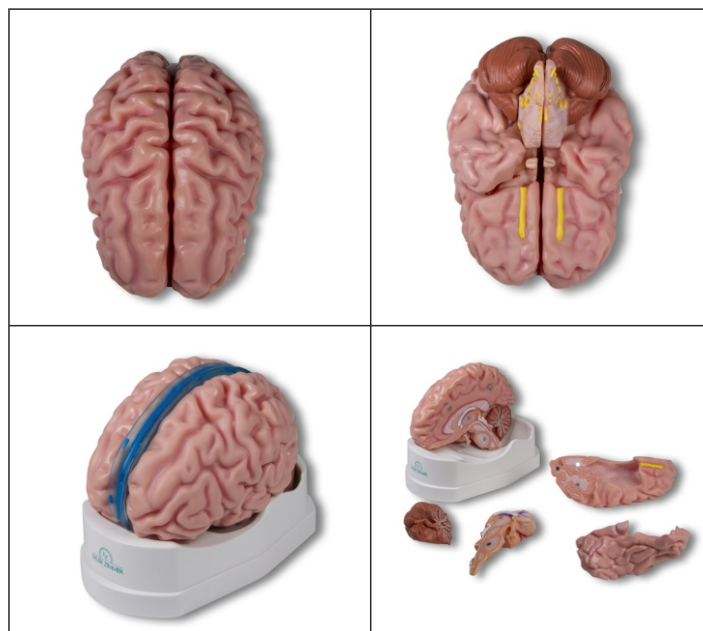
Mounted on baseboard.

Size: 36 x 16 x 20 cm, weight: approx. 1 kg



Anatomical brain model, life-size, 5 parts - EZ Augmented Anatomy

Model No. C918 (Erler Zimmer, Germany.)



This life-sized brain model is carefully painted in realistic color depicting the major anatomy of the brain. The left half comes apart in four pieces- the frontal and parietal, the temporal and occipital, the brainstem, and the cerebellum.

The brainstem includes the trigeminal nerve (V),
abducens nerve (VI),
vestibulocochlear nerve (VIII),
facial and intermediate nerves (VII),
trochlear nerve (IV),
olfactory nerve (I),
glossopharyngeal nerve (IX),
vagus nerve (X),
accessory nerve (XI),
cervical ventral roots, and hypoglossal nerve (XII).

The hippocampus is attached to the brainstem to show the relation of the hippocampus to the fornix and mammillary body in the brainstem. The choroid plexus is also shown. This model fits perfectly in our skull models ref.no. 4500, 4505, 4508, 4509, 4512, 4514, 4701 and 4708 and is compatible with the Falx cerebri model ref.no. C925.



Lungs, Heart and Pharynx, 7 parts

Model No. G115 (Erler Zimmer, Germany.)



A life size reproduction of the complete human respiratory system.

It is composed of 7 parts showing the larynx (dissected along the sagittal plane);

the lungs (dissected along the frontal plane); and a two-part heart. Mounted on base

Size: 26 x 40 x 12 cm, Weight: approx. 1.3 kg



Larynx Model, 2 Times enlarged, 5 Parts

Model No. G121 (Erler Zimmer, Germany.)



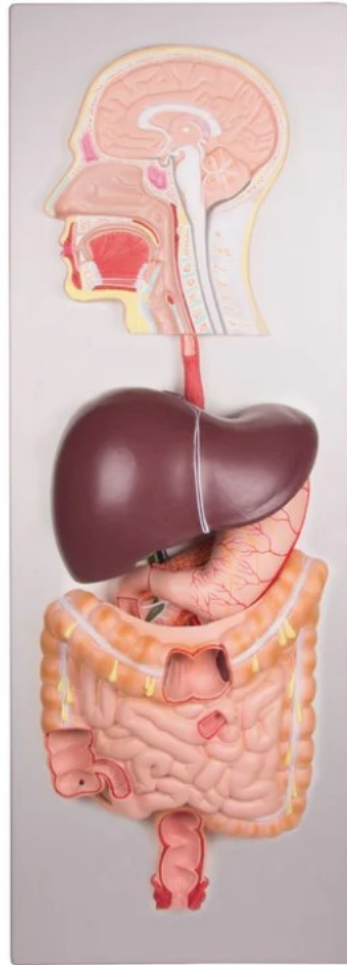
This 5-part model is sectioned longitudinally to reveal intimate details of internal structures, including the hyoid bone, cartilages, ligaments, muscles, vessels, nerves and thyroid gland. Mounted on stand.

Size: 18 x 11 x 8 cm, Weight: 0.5 kg



Human digestive system, 5 parts

Model No. K221 (Erler Zimmer, Germany.)



- This life size model shows the human digestive tract from mouth cavity to rectum. The oral cavity, the pharynx and the first part of the esophagus are dissected along the medial sagittal plane.
- The liver is shown together with the gall bladder and is removable.
- The removable pancreas and duodenum are dissected to expose internal features.
- The stomach is removable and can be dismantled into two parts, the duodenum, caecum, part of the small intestine, large intestine and the rectum are open to expose the interior.
- Mounted on board.
- Size: 90 x 31 x 13 cm

semtrainersvalsad@gmail.com

www.semtrainers.com



Follow
us on



SEM TRAINERS & SYSTEMS

8849563724 | 9879103905

Shop No.7, Saibaba Apartment, Opp. Main Post Office,
Halar Road, Valsad-396001, Gujarat.



Stomach, life size, 2 parts

Model No. K215 (Erler Zimmer, Germany.)



This life size model is dissected along the medial plane and can be opened to show the internal structure of the stomach, including the cardia, the mucosa and the pylorus. The model also shows the blood vessels.

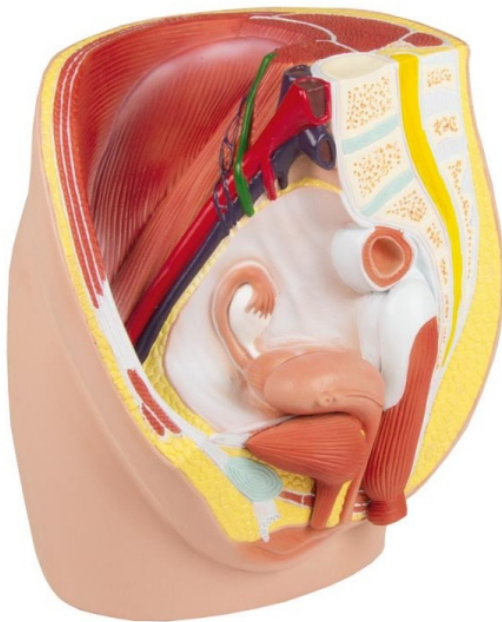
Mounted on stand.

Size: 15 x 15 x 6 cm, weight: 0.5 kg



Female Pelvis, life size, 3-part

Model No. H210 (Erler Zimmer, Germany.)



- This life size model is median sagittal sectioned and shows the female pelvis in 3 parts.
- Additional to muscles and vessels of the abdomen it depicts particularly the urogenital organs.
- Removable are one half of the uterus, vagina and bladder as well as one half of bowel with rectum.
- Size: 22 x 20 x 25 cm, weight: approx. 1 kg



Uterus with diseases

Model No. L262 (Erler Zimmer, Germany.)



Life size model of an uterus with multiple diseases. It shows endometriosis, cysts, adhesions, fibroma, cervical carcinoma, sarcoma, adenomyosis, polyps and salpingitis. Of course normal anatomy is also represented.

It shows vagina, cervix, endometrium, myometrium, endocervical canal, uterine cavity, fallopian tube, ovary, fimbria, follicles and mesosalpinx.

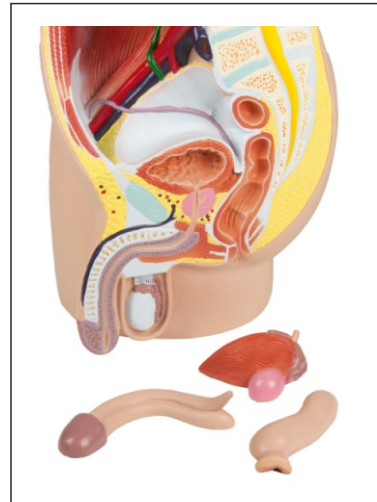
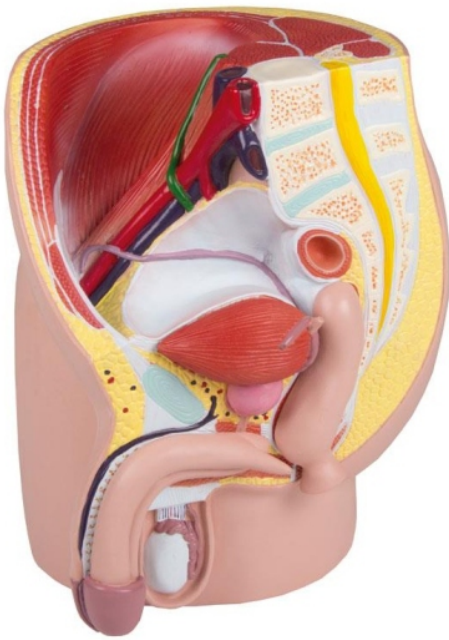
An educational card locates the diseases and anatomy. On removable stand.

Size: 23 x 16 x 6 cm, weight: 0.5 kg



Male Pelvis, life size, 4-part

Model No. H211 (Erler Zimmer, Germany.)



This life size model is median sagittal sectioned and shows the male pelvis in 4 parts.

Additional to muscles and vessels of the abdomen it depicts particularly the urogenital organs.

Removable are one half of the cavernous body, one half of the bladder with prostate and one half of bowel with rectum.

Size: 21 x 19 x 25 cm, weight: approx. 1 kg

semtrainersvalsad@gmail.com

www.semtrainers.com



Follow
us on



SEM TRAINERS & SYSTEMS

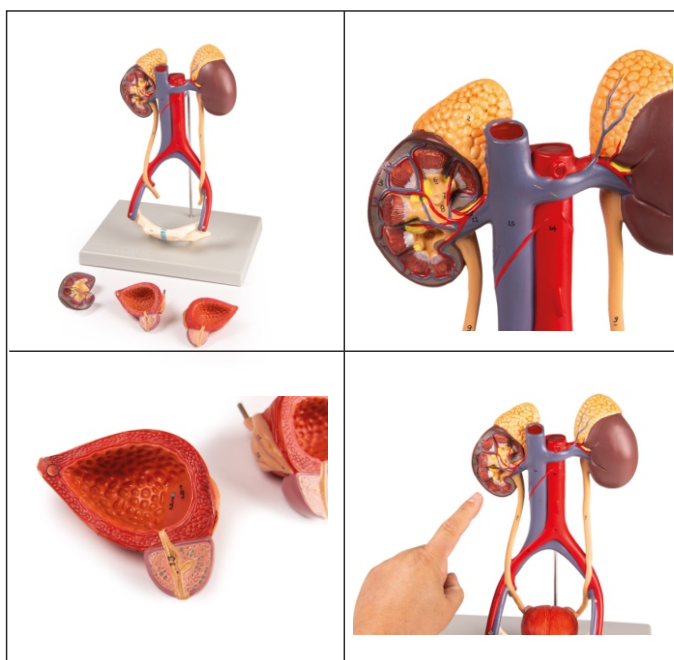
8849563724 | 9879103905

Shop No.7, Saibaba Apartment, Opp. Main Post Office,
Halar Road, Valsad-396001, Gujarat.



Urinary System, 5 parts

Model No. K132 (Erler Zimmer, Germany.)



This life size 5-part model represents the major components of the urinary system,

plus the vena cava and abdominal aorta; the right kidney is dissected to show the cortex, medulla, pyramids, calyces, pelvis and origins of the renal artery and vein.

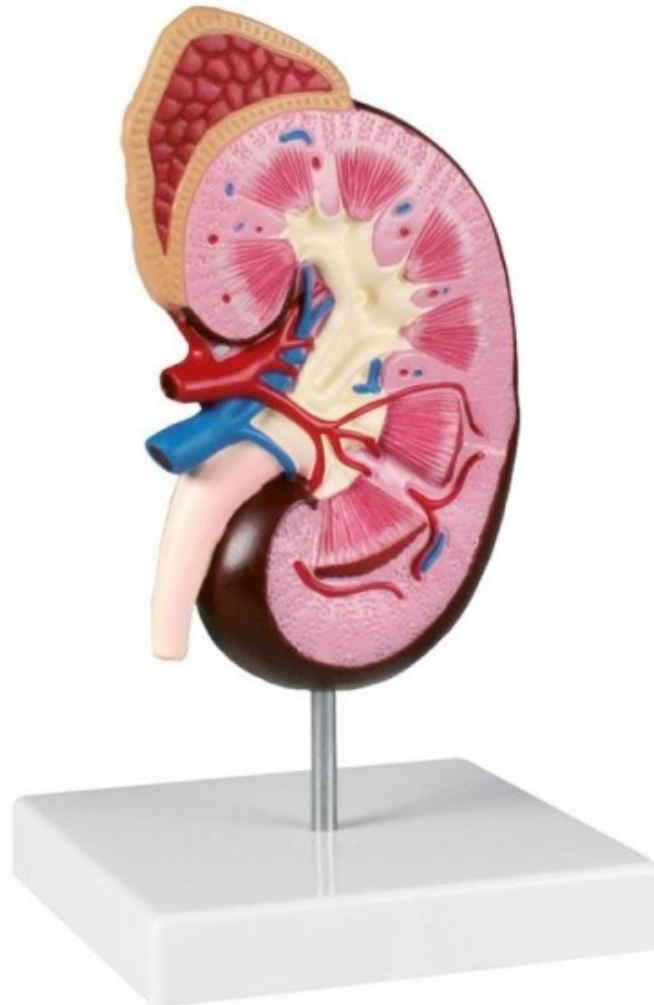
The bladder can be opened to reveal the mucosa, trigone, urethra, seminal vesicles, ejaculatory ducts and vas deferens. Mounted on base.

Size: 24.5 x 18 x 36 cm, weight: 0.7 kg



Kidney model, 2 times life size - EZ Augmented Anatomy

Model No. K260 (Erler Zimmer, Germany.)



This model of a human kidney in about 2 times life size shows hand

- painted details of renal pelvis,
- renal medulla, renal calyx,
- renal cortex,
- renal artery and vein,
- ureter and adrenal gland.

With educational card and stand.

Size: 16 x 10 x 5 cm, weight: 0.3 kg

semtrainersvalsad@gmail.com

www.semtrainers.com



Follow
us on



SEM TRAINERS & SYSTEMS

8849563724 | 9879103905

Shop No.7, Saibaba Apartment, Opp. Main Post Office,
Halar Road, Valsad-396001, Gujarat.



Knee joint with ligaments with stand

Model No. 4552 (Erler Zimmer, Germany.)

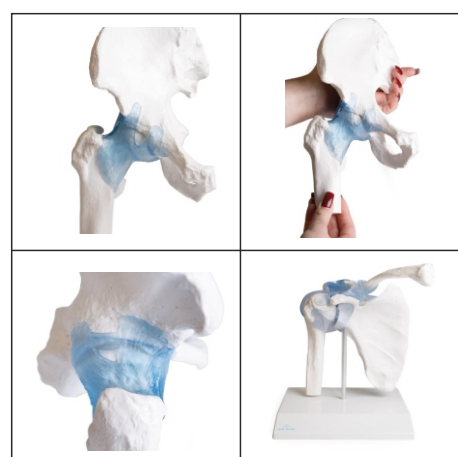


Natural casting of a human knee joint. With stumps of femur and lower leg. The insertion tendons of the straight muscle of the thigh, kneecap with patellar tendons, lateral ligaments, meniscuses and cruciate ligaments are manufactured from elastic synthetic material. The principal movements of the knee joint, such as flexion and extension and outer and inner rotation can be demonstrated. With removable stand.



Hip joint with ligaments with stand

Model No. 4553 (Erler Zimmer, Germany.)



Natural casting of a human hip joint. The femoral stump is retained in the hip joint by the ligamentary apparatus. The ligamentary apparatus with the iliofemoral ligament, ischiofemoral ligament and pubofemoral ligament allow demonstration of the movements of the hip joint. Flexion and retroversion (extension), abduction and adduction and to a certain extent also outer and inner rotation. With removable stand.



Elbow joint with ligaments with stand

Model No. 4556 (Erler Zimmer, Germany.)

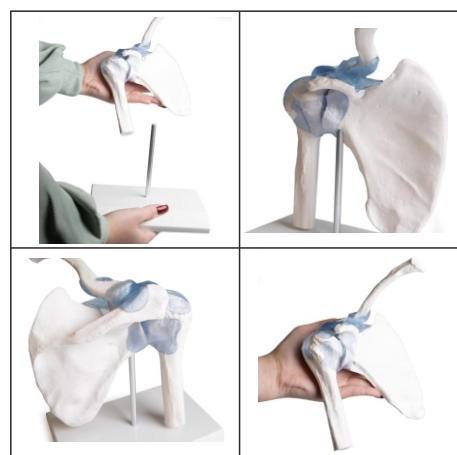


Natural casting of a human elbow joint. Upper arm stump, radius and ulna. The ligamentary apparatus and the interosseous membrane are manufactured from elastic material. The model allows demonstration of the movements of the elbow joint such as flexion and extension, in addition to the rolling movement of the bones of the lower arm during pronation and supination. With removable stand.



Shoulder joint with ligaments with stand

Model No. 4550 (Erler Zimmer, Germany.)



Natural casting of a human shoulder joint. Shoulder girdle (shoulder blade and clavicle) with upper arm stump. The principal ligaments, such as the coracoacromial ligament, coracohumeral ligament and transverse ligament of the scapula are represented in addition to sections of the joint capsule. The main movements of the shoulder joint, such as anteversion, retroversion, outer and inner rotation and abduction can be demonstrated. With removable stand.



Oral hygiene model 1.5 times life size

Model No. D217 (Erler Zimmer, Germany.)



A 1.5x life size model that is useful for teaching the correct way to brush teeth. A giant toothbrush is included. Mounted on base.

INC Skill lab Guidelines

C. Working Models

S.No.	Items	Quantity
1.	Heart	1
2.	Lungs	1
3.	Kidney	1
4.	Joints	1

D. Charts

S.No.	Items	Quantity
1.	Skeleton system	2
2.	Muscular system showing different muscles of the body	2
3.	Joints and ligaments	2
4.	Nervous system	
	Brain	2
	Spinal cord	2
5.	Cardio-vascular system	2
6.	Respiratory system	2

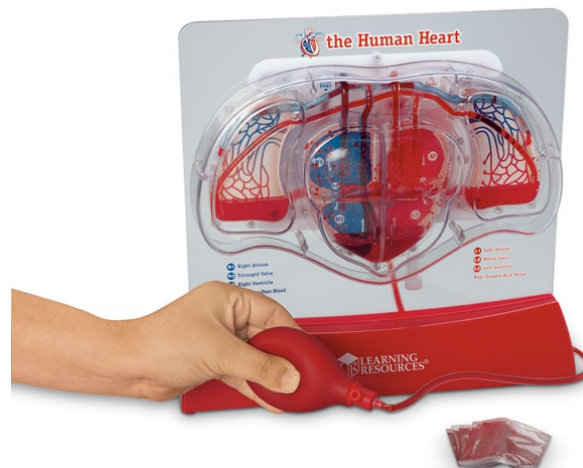
15

Description	Qty	Model No.	Item Name
Heart	1	SB48204U	Pumping heart model
Lungs	1	G115	Lungs, Heart and Pharynx, 7 parts
Kidney	1	K111	Kidney Section with Renal Nephron and Renal Corpuscle
Joints	1	4661	Shoulder Joint, life size, with muscles - EZ Augmented Anatomy
		4662	Knee Joint, life size, with muscles
		4663	Hip Joint, life size, with muscles



Pumping Heart Model

Model No. **SB48204U** Sh. wt. 3.25 lbs.

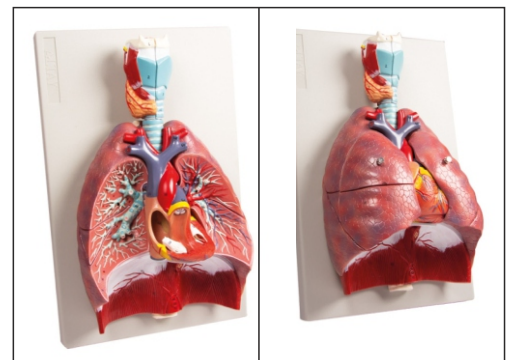


- Create a memorable exploration of how the heart and lungs work together for oxygen exchange
- A simple hand pump demonstrates basic heart and pulmonary blood flow
- No mess — liquid is sealed in
- Includes clearly labeled heart chambers, main artery, veins, lungs, and activity guide
- 12 in. L x 11 in. W x 5 in. D



Lungs, Heart and Pharynx, 7 parts

Model No. **G115** Weight: approx. 1.3 kg

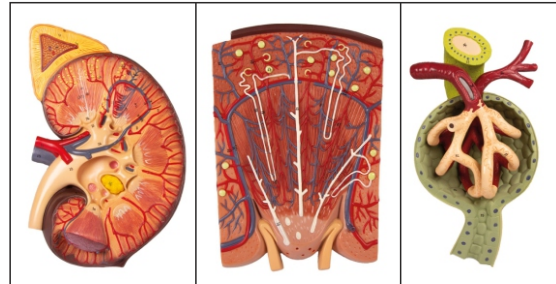


A life size reproduction of the complete human respiratory system. It is composed of 7 parts showing the larynx (dissected along the sagittal plane); the lungs (dissected along the frontal plane); and a two-part heart. Mounted on base
Size: 26 x 40 x 12 cm,



Kidney Section with Renal Nephron and Renal Corpuscle

Model No. K111 wt. 4.1kg



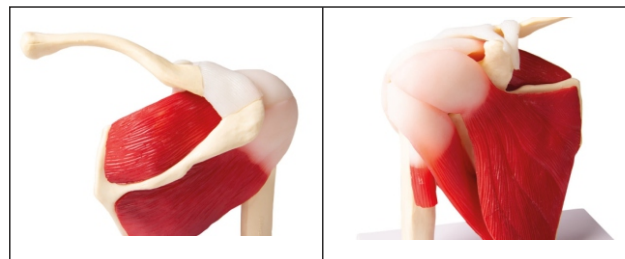
This 3 models set shows the basic structure of the kidney. We can find as a first model a frontal section of the kidney, enlarged 3 times, illustrates adrenal gland, cortex, medulla, pyramids with papillae, renal pelvis and blood vessels. The second model, representing a nephron enlarged 120 times, shows renal tubules, a collecting tube system and Henle's loop. The third one illustrates Malpighian corpuscle with the Bowman's capsule, 700 times life size. All these models are a great instrument to understand the kidney anatomy in all the inner details. The three models are mounted on board.

Size: 70 x 29 x 12 cm,



Shoulder Joint, life size, with muscles - EZ Augmented Anatomy

Model No. 4661 Weight: approx. 0.8 kg



Human shoulder joint in life size with rotator cuff (Supraspinatus, infraspinatus, teres minor, teres major and subscapularis muscle) as well as the biceps brachii tendon. The joint has a limited movability. With educational card German/English. On Stand.

Size: 17 x 15 x 12 cm,



SEM TRAINERS & SYSTEMS

☎ 8849563724 | 9879103905

Shop No.7, Saibaba Apartment, Opp. Main Post Office,
Halar Road, Valsad-396001, Gujarat.



Knee Joint, life size, with muscles

Model No. 4662 wt. 0.8kg



Human knee joint in life size with all important muscles and ligaments (collateral ligaments, meniscus, crucial ligaments, patellar tendon). The joint is not movable. With educational card German/English. On Stand.

Size: 8 x 8 x 24 cm.



Hip Joint, life size, with muscles

Model No. 4663 Weight: approx. 0.7 kg



Human hip joint in life size with all important muscles and ligaments. The joint has a limited movability. With educational card German/English. On Stand.

Size: 13 x 13 x 24 cm.

V. MIDWIFERY & CHILD HEALTH NURSING LABORATORY

1. Midwifery

A. Models and Manikins (Mannequins)/Simulators

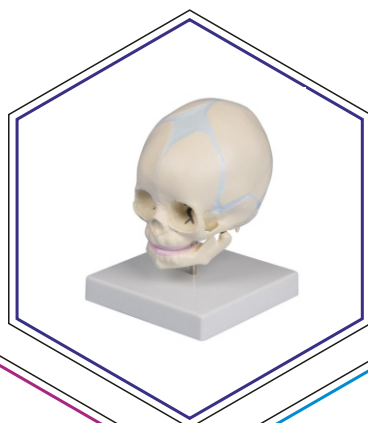
S.No.	Items	Quantity
1.	Stages of development of embryo model	1 set each
2.	Abdominal (Antenatal) palpation manikin with Leopold manoeuvre	2
3.	Human fetus replicas	2
4.	Child birth (Advanced birthing) simulator with episiotomy repair attachments	4
5.	Cervical dilatation model with attachments	2
6.	Female pelvis model	5
7.	Fetal skull model	5
8.	Placenta	2
9.	Breast examination model	2
10.	Essential new born care & new born resuscitation manikin & kit (Neo Natalie)	4
11.	Baby doll/New born baby	2
12.	Adult IV arm training kit	2
13.	IM injection training manikin	2
14.	Female catheterization manikin	2
15.	Manikin for simulation and management of PPH (Mama Natalie)	4
16.	Adult CPR manikin	1
17.	Zoe model with post-partum uterus for IUCD insertion (Gynecological simulator)	1
18.	Anteverted and retroverted uterus model	1
19.	Hand held uterus model	2
20.	Penile model	2

B. Charts

S.No.	Items	Quantity
1.	Pregnancy chart (breast changes and uterus changes)	1
2.	Fetal development chart	1
3.	EDD calculator chart/wheel	20

MIDWIFERY & CHILD HEALTH LABORATORY

Description	Qty	Model No.	Item Name
Stages of development of embryo model	1	L205	Pregnancy Model Set, 9 models
Abdominal (Antenatal) palpation manikin with Leopold manoeuvre	2	SB38758 L	TOTAL CHILDBIRTH EDUC LGHT
Human fetus replicas	2		
Child birth (Advanced birthing) simulator with episiotomy repair tvey attachments	4	SB38758 L	TOTAL CHILDBIRTH EDUC LGHT
Cervical dilatation model with attachments	2	SB38758 L	TOTAL CHILDBIRTH EDUC LGHT
Female pelvis model	5	4054	Female pelvis with sacrum
Fetal skull model	5	4519	Fetus skull, 30. week
Placenta	2	R10071	Model of Placenta & Umbilical Cord
Breast examination model	2	LF00980	Adv Breast Exam Simulator
Essential new born care & new born resuscitation manikin & kit (Neo Natalie)	4	101-340	Neo Nate - Neonatal Resuscitation Trainer
Baby doll/New born baby	2	SB34425L	Newborn Baby Dolls
Adult IV arm training kit	2	7010	Training arm for intravenous injection and infusion
IM injection training manikin	2	LF00952	Injection Trainer Light
Female catheterization manikin	2	LF00856	Female Cath Simulator
Manikin for simulation and management of PPH (Mama Natalie)	4		
Adult CPR manikin	1	PP-AM-100	Prestan Adult CPR Manikin
Zoe model with post-partum uterus for IUCD insertion (Gynecological simulator)	1	SB28796L	Zoe® Gynecologic Simulator
Anteverted and retroverted uterus model	1		
Hand held uterus model 261	2	L261	Uterus model
Model feathers	2	L45	Condom Training model, white skin colour





Pregnancy Model Set, 9 models

Model No. L204 (Erler Zimmer, Germany.)



This series was developed in co-operation with a German midwifery school and is composed of 8 life-size models and one enlarged model. It illustrates the human development from the 4th week to the 24th week. All the main anatomical structures of the uterus and embryo/fetus are well represented and explained on the manual.

The models show:

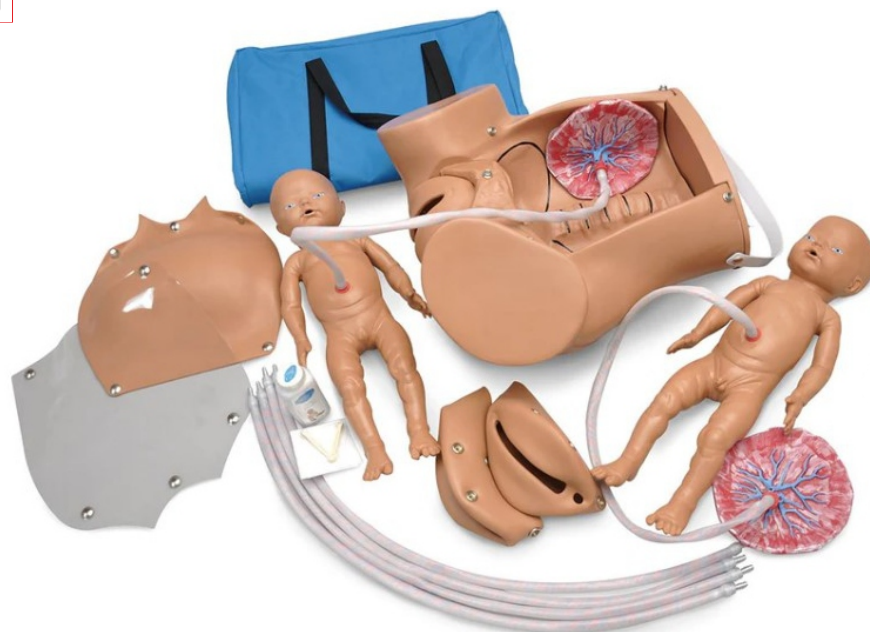
- Embryo, 4 weeks, enlarged
- Embryo in uterus, 4 weeks
- Embryo in uterus, 8 weeks
- Fetus in uterus, 12 weeks
- Fetus in uterus, 16 weeks
- Fetus in uterus, transverse presentation, 24 weeks
- Twins in uterus, 2 separate placentas, 16 weeks
- Twins in uterus, 1 common placenta, 16 weeks

Each model is mounted on a removable stand. Some models allow removable of the fetus.



Total Childbirth Education Station - Light

Model No. SB38758 L



The Obstetric Susie® S500 is a versatile childbirth skills trainer for practicing routine and complicated delivery techniques. Participants can practice providing care through the birthing process from delivery to postpartum care. The simulator's lifelike features ensure participants can go hands-on and practice the skills needed to provide safe and effective care during high-risk/low-frequency events.

- Normal vaginal delivery
- Complete, frank, and footling breech birth
- C-section delivery
- Ritgen's maneuver
- Episiotomy
- Vertex presentation
- Intrauterine manipulation
- Vertex/vertex, vertex/breech, breech/vertex, or breech/breech presentation in multiple births
- Prolapse of umbilical cord
- Demonstration of placenta previa: total, partial, and marginal
- Normal delivery of umbilical cord and placenta
- Palpation of fetal fontanelles
- Removable diaphragm end plate for manual positioning of fetal baby/babies
- Removable stomach cover for positioning fetus
- Life-size pelvic cavity with major anatomic landmarks
- Hand-painted outline of the bony pelvis
- Three soft vulval inserts for episiotomy exercises
- One baby boy and one baby girl, each with umbilical cord and placenta
- Anatomically accurate backbone and fontanelles on fetal baby/babies

Package Contents:

- Obstetric Susie® S500 Skill Trainer
- One skin-tone stomach cover
- Four extra umbilical cords
- Two umbilical clamps
- Talcum powder
- Instruction manual
- Soft carrying bag



SEM TRAINERS & SYSTEMS

8849563724 | 9879103905

Shop No.7, Saibaba Apartment, Opp. Main Post Office,
Halar Road, Valsad-396001, Gujarat.



Female pelvis with sacrum

Model No. 4054 (Erler Zimmer, Germany.)



Natural casting of an adult female pelvis. The sacrum is removable and the movements in the iliosacral joint can be demonstrated.



Fetus skull, 30. week

Model No. 4519 (Erler Zimmer, Germany.)



This model represents a human foetal skull in the 30. week of pregnancy.

Size: 12 x 12 x 27 cm, weight: 0.4 kg



Advanced Breast Examination

Model No. LF00980 Sh. wt. 17 lbs.



Life/form® Advanced Breast Exam Simulator

Tissue density varies within the simulated breast

Tumors of varying sizes (1-4 cm diameter), shapes (round, oval, irregular/stellate), and densities can be inserted by the instructor for an expanded combination of training scenarios

Tumors represent adenomas, cysts, malignant tumors, and enlarged lymph nodes

Torso is correctly positioned in the supine position and allows access to both axillae

Features palpable ribs, sternum and clavicles, and enlarged lymph nodes in the axillary and subclavicular areas

5-year warranty

- Peau d'orange ("orange peel skin") with inflammation,
- inverted nipple, skin dimpling, and asymmetry are
- also depicted on the incredibly realistic skin
- Designed for supine or upright examination
- Training may also be done without the overlay skin
- Includes a rigid underbody, right and left breast
- inserts, overlay skin, 3 tumor sets (27 lumps), 9 soft nodules to represent soft breast tissue, 1 hard lump to represent chest wall infiltration, baby powder, instruction manual, and hard carry case
- 14 in. W x 11 in. H x 6 in. D

Consumables & replacement parts	Model No.
Left Breast Replacement Sh. wt. 2 lbs.	LF00980(A)U
Right Breast Replacement Sh. wt. 1.50 lbs.	LF00980(B)U
Replacement Tumor Set — 27 Lumps Sh. wt. 0.50 lbs.	LF00980(C)U



SEM TRAINERS & SYSTEMS

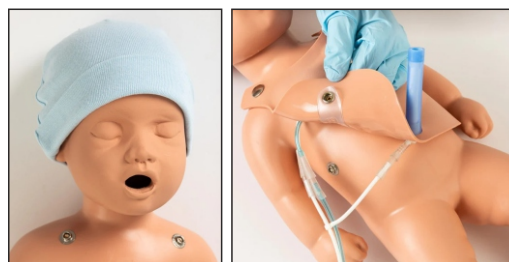
8849563724 | 9879103905

Shop No.7, Saibaba Apartment, Opp. Main Post Office,
Halar Road, Valsad-396001, Gujarat.



Neo Nate - Neonatal Resuscitation Trainer

Model No. 101-340



Effective simulation of standard and emergency care immediately after birth.

Simulated birth cries, airway clearance, auscultation of heart sounds, ventilation with proper head tilt and chin lift, simulated heartbeat and umbilical pulse.

A high-quality, lifelike neonatal trainer designed for the instruction of basic care and lifesaving skills in the moments immediately after birth. Neo Nate addresses key training demands of neonatal care specialists in clinical settings, making it ideal for the training of nurses, midwives, obstetricians, and neonatal/pediatric care providers.

Key Features

- Three-year warranty
- Removable chest overlay with lungs and umbilical stump
- Umbilical cord management
- Realistic chest compressions with click
- Visible chest rise during ventilation
- Simulated vital signs

semtrainersvalsad@gmail.com

www.semtrainers.com



Follow us on



SEM TRAINERS & SYSTEMS

☎ 8849563724 | 9879103905

Shop No.7, Saibaba Apartment, Opp. Main Post Office,
Halar Road, Valsad-396001, Gujarat.





Newborn Baby Dolls

Model No. SB34425 L Sh. wt. 5 lbs.



Newborn Baby Dolls

- Lifelike baby is only 1 day old, its eyes are just slightly open, its umbilical cord is still visible, and it has a “soft spot” on its carefully sculpted head
- Soft vinyl body with jointed arms and legs
- Surface washable and posable
- The doll is anatomically correct for complete realism
- Baby dolls arrive with diapers
- 21 in. long



Training arm for intravenous injection and infusion

Model No. 7010 (Erler Zimmer, Germany)



- The high-quality Erler Zimmer injection arm offers a wide range of application possibilities for professional and realistic training of blood collection, ideally suited for the training and further education of medical personnel.
- The injection arm is very lifelike, especially in terms of the puncture feeling, requires hardly any care and has skin and veins that can be changed easily and quickly.
- This unbeatable value for money model is particularly suitable for group training. The wear parts are easily changed by the user and cost a fraction of comparable competitor products, so you can let your practitioners practice as often as they like.
- 5 year warranty, manufactured in Germany.

Ideally suited for:

- Intravenous injection
- Intravenous infusion
- Blood collection
- Palpation of veins
- Placement of a venous access

Scope of delivery:

- 1x adult injection arm incl. skin and venous system
- 1x arm support
- 4x fluid container
- 1x 250ml artificial blood
- 1x stand for artificial blood
- 1x product manual



Injection Training Models

Model No. LF00952 Sh. wt. 2.25 lbs.



The Life/form® Injection Training Models allows individuals to Practice intradermal, subcutaneous, and intramuscular injections safely and conveniently.

The soft, realistic material can be punctured repeatedly without showing needle holes. Injecting with liquids is not recommended.

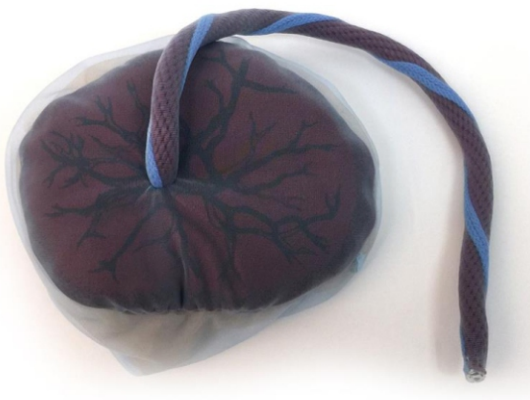
Pad measures 7 in. L x 4 in. W x 2-1/2 in. D.

Five-year warranty.



Model of Placenta & Umbilical Cord

Model No. R10071



The amniotic membrane allows you to show the fetal model inside the sac. The snap-on umbilical cord clearly shows the vein and arteries and a convenient drawstring closes the sac. Both amniotic and chorionic membranes are detailed accurately in two colors. Fits to model R10070.



Female Catheterization Simulator

Model No. LF00856 Sh. wt. 21 lbs.



- Simulator is the lower torso of a middle-aged woman with thighs abducted for proper position during catheterization
- Includes a bladder reservoir, patient urethra, and a valve simulating the internal urethral sphincter
- Normal feeling of resistance and pressure is experienced as a catheter is passed through the urethra, past the sphincter, and into the bladder
- When the catheter enters the bladder, artificial urine (water) will flow from the catheter
- External genitalia and perineum are molded in lifelike form
- Labia minora can be spread apart naturally to reveal the clitoris, urethral opening, and vaginal introitus
- Includes lubricant, silicone catheter, instruction manual, and hard carry case
- 5-year warranty

Consumables & replacement parts	Model No.
Foley Catheter, Silicone <ul style="list-style-type: none">• 16 FR 5 cc Each. Sh. wt. 0.25 lbs.Pkg. of 10. Sh. wt. 0.63 lbs.	LF01127U LF01128U
Fluid Administration Set <ul style="list-style-type: none">• With special adapter for Male and Female Catheterization Simulators• Includes fluid bag with tubing and a fitting	LF01098U LF01022U
Fluid Supply Stand <ul style="list-style-type: none">• 5 in. x 8 in. base, 5/16 in. steel hooked rod	Sh. wt. 4 lbs.

Consumables & replacement parts	Model No.
Lubricant Kit <ul style="list-style-type: none">• 2-oz. bottle• Pkg. of 6 Sh. wt. 0.88 lbs.	LF00985U
Nasco Cleaner <ul style="list-style-type: none">• Use to remove stubborn stains from <i>Life/form®</i> simulators and trainers• 12-oz. bottle Sh. wt. 0.88 lbs.	LF09919U
Catheter Obstruction Tool <ul style="list-style-type: none">• Use to clear any obstructions within the urethra• Comes in a zipper closure bag with lubrication and instructions	LF00844U Sh. wt. 0.38 lbs.



Prestan Adult CPR Training Manikin

Model No. : PP-AM-100M



Professional-quality manikin at a fraction of the cost! Comprehensive design allows for practice of Heimlich maneuver and abdominal thrusts, as well as CPR and mouth-to-mouth breathing. Realistic anatomical markings (Adam's apple, carotid arteries, navel, rib cage, chest notch) make it easy to learn correct hand placement for checking pulse, performing chest compressions, and more.

Prestan Professional CPR-AED Manikins are now approved for use by American Heart Association for the American Red Cross layperson and professional rescuer training courses.

Realistic to the eye and the touch, the Prestan Adult Professional Manikin is unlike any other on the market. Prestan manikins are uniquely designed as a clamshell and accommodates an easy-to-insert face shield/lung bag.

The Prestan manikins are equipped to be used with ANY AED trainer on the market today. The manikins come in three skin tones: Light, medium, and dark, and come with or without the CPR Monitor. They come individually, in a convenient four pack, or in a "Family Pack," consisting of an adult manikin, a child manikin, and an infant manikin.

Compression Clicker sound to give feedback and Compression Depth

2019 AHA Compliant with CPR Rate Monitor: Prestan's revolutionary new CPR Rate Monitor allows for instant feedback to both instructor and student regarding the rate of chest compression. This allows each student to gauge their rate of compressions on their own as well as allowing the instructor to monitor several students quickly and easily.

Product Dimensions and Weight:

- Weight: 7 lbs.
- Dimensions: 7" x 14" x 23"

Contents:

- Prestan Adult Manikin
- (OPTIONAL CPR Monitor)
- 10 Lung Bags
- Instruction Sheet
- 1 Nylon Carrying Case



- Red light: 1 to 59 compressions per minute
- Yellow light: 60 to fewer than 79 compressions per minute
- One green light: 80 to 99 compressions per minute
- Two green lights: 100 compressions per minute



ZOE Gynecologic Simulator, Light

Model No. SB28796 L Sh. wt. 30 lbs.



Combines the ability to demonstrate multiple gynecologic procedures, as well as practice laparoscopic examination and minilaparotomy

Features:

- Full-size adult female lower torso with relevant internal anatomic landmarks
- Bimanual pelvic examination
- Palpation of normal and pregnant uteri
- Vaginal examination (including insertion of speculum)
- Visual recognition of normal and abnormal cervixes
- Uterine sounding
- IUD insertion and removal
- Contraceptive sponge insertion and removal
- Female condom insertion and removal
- Diaphragm and cervical cap insertion and removal
- Laparoscopic visualization and occlusion of fallopian tubes
- Minilaparotomy
- 1 anteverted and 1 retroverted parous uterus
- One 10-week pregnant uterus
- 1 postpartum uterus
- 5 normal cervixes with patent os
- 4 abnormal cervixes
- 10 fallopian tubes
- Realistically sculpted and anatomically accurate ovaries and fimbriae
- Uterus and cervix feature patented "screw" design for fast and easy change-out
- Includes complete skin covering, talcum powder, K-Y Jelly, instruction manual, and soft nylon carry bag



Uterus model

Model No. L261 Wt. 0.5Kg



Life size model of a healthy uterus. Anatomy is shown in detail, structures are carefully painted by hand. Cervix, endocervical canal, uterine cavity are sectioned to show endometrium and myometrium. Also one fallopian tube and one ovary are opened, follicles and oogenesis can be seen. An educational card locates the anatomy. Perfect for IUD demonstration. IUD not included On removable stand.

Size: 23 x 16 x 6 cm



Condom Training model, white skin colour

Model No. L45



This life size model of an erected penis can be fixed on the table using a sucker foot and is perfect for training the correct use of a condom. Can be used with normal condoms, no special condom required.

Penis length: 13.5 cm
White skin colour.

INC Skill lab Guidelines



S.No.	Items	Quantity
76.	Dry duster (cloth)	25
77.	Mops	4
78.	Pitcher (10-15 lt.)	4

2. Child Health Nursing

A. Models and Manikins (Mannequins)/Simulators

S.No.	Items	Quantity
1.	Pediatric training manikin	2
2.	Infant and child airway management trainer	1 each
3.	Infant injectable head	2
4.	Infant auscultation simulator	2
5.	NG tube trainer (pediatric)	2
6.	Pediatric multi venous training arm kit	2

B. Charts

S.No.	Items	Quantity
1.	Growth and development chart	1
2.	Weaning foods chart	1
3.	Breast feeding positions	20
4.	IMNCI chart (12 posters)	1 set
5.	CPR – Infant & child	1 each

Description	Qty	Model No.	Item Name
Pediatric training manikin	2	SB22746 L	Mike/michelle 5yr Ped Lght
Infant and child airway management trainer	1	LF03609	Child Airway Mngt Trainer
		LF03623	Infant Airway Mgmt Trainer
Infant injectable head	2	LF00999	Infant Injectable Head
Infant auscultation simulator	2	LF01201	Infant Auscultation Simltr
NG tube trainer (pediatric)	2	160-8551	NG TUBE TRAINER
Pediatric multi venous training arm kit	2	LF00958	Pediatric Arm



Mike® and Michelle® Pediatric Care Simulator - 5-Year-Old.

Model No. SB22746 L



- Sophisticated pediatric simulators for training in standard and advanced clinical procedures
- Realistic face, body, and fully jointed elbows, wrists, knees, and ankles
- Bathing and bandaging activities
- Feature soft, childlike face skin self-molded hair eyes open and close in realistic eye sockets for ophthalmic procedures fully articulated head and jaw with teeth and tongue NG and otic exercises bends 30° at waist jointed elbows and knees realistic hands, feet, fingers, and toes soft upper body skin over hard upper body intramuscular injection sites in left and right upper thighs TB test site interchangeable male organ tracheostomy opening male and female catheterization removable internal tanks enema administration and neck brace
- Fully jointed wrists and ankles
- Comes with nylon carry bag
- 44 in. long



Child Airway Management Trainer with Stand

Model No. LF03609 Sh. wt. 17 lbs.



- Simulated head of a 5-year-old child featuring realistic size and anatomy
- Perfect for practicing airway management skills on pediatric patients
- Realistic anatomy includes mouth, tongue, oral pharynx, larynx, epiglottis, vocal cords, trachea, and esophagus
- Separate lungs for auscultation
- Manual carotid pulse
- Inflatable stomach to indicate esophageal insufflation
- Practice suctioning as well as oral, nasal, and intubation techniques
- Includes lungs, stomach, pump spray lubricant, instruction manual, and hard carry case
- 5-year warranty

semtrainersvalsad@gmail.com

www.semtrainers.com



Follow us on



SEM TRAINERS & SYSTEMS

☎ 8849563724 | 9879103905

Shop No.7, Saibaba Apartment, Opp. Main Post Office,
Halar Road, Valsad-396001, Gujarat.





Infant Airway Management Trainer with Stand

Model No. LF03623 Sh. wt. 16 lbs.



- Features realistic size and anatomy and is perfect for practicing airway management skills on an infant
- Includes head mounted on sturdy stand, lungs, stomach, pump spray lubricant, instruction manual, and hard carry case
- 5-year warranty



NG Trainer

Model No. 160-8551



Economic trainer for instruction of nasogastric tube insertion and care
No moving parts and simple construction assure longevity
Replacement parts are limited to the stomach bag so cleanup is easy and quick
Ship weight 5.50 lbs.



Paediatric Head

Model No. : LF00999 Sh. wt. 9.50 lbs.



The Life/form® Paediatric Head is an Invaluable tool for demonstrating and practicing infusions and injections in the temporal and jugular veins of a newborn to twelve-month-old infant.

Functional head is realistically modeled to represent a six-month-old infant.

This model provides realistic sensation and response. The lifelike vinyl skin actually rolls as you palpate to allow location of the vein. The synthetic rubber tubing for the veins was carefully selected to provide a lifelike simulation of vein size, and feeling of puncture and palpation for practicing venipuncture.

The temporal vein of the Life/form® Paediatric Head is easily accessible for IV infusions. Practice in the jugular vein is equally realistic. The neck is made of soft, flexible foam to provide a realistic feel of palpation and puncture.

Includes a Life/form® Head with skin and veins, fluid supply bag, two different gauge winged infusion needles, one pint Life/form® blood, teaching guide, and hard carry case. Fluid supply stand not included

Five-year warranty.

Carton size: 19 in. x 10 in. x 5 in.

Consumables & replacement parts	Model No.
Pediatric Head Replacement Skin and Vein Kit Sh. wt. 2 lbs.	LF01003U
Pediatric Head Vein Replacements Only Sh. wt. 0.25 lbs.	LF01058U



SEM TRAINERS & SYSTEMS

☎ 8849563724 | 9879103905

Shop No.7, Saibaba Apartment, Opp. Main Post Office,
Halar Road, Valsad-396001, Gujarat.



Infant Auscultation Trainer with Airway Management

Model No. LF01201



- Visual and tactile realism are combined in the simulator to provide the most realistic training possible
- Anatomical landmarks provide key features necessary to learn proper infant handling in emergency and non-emergency situations
- Features 1 heart, 1 bowel, and 2 lung sites on the anterior surface, and 2 lung sites on the posterior surface
- Practice umbilical clamping, cutting, cannulation, and blood aspiration with the chest skin and umbilicus
- Anatomically correct in both size and detail
- Palpate to identify the correct auscultation sites to hear different heart, bowel, and lung sounds
- Select from 11 heart conditions, 4 bowel conditions, and 9 lung conditions
- For a list of heart, bowel, and lung conditions, visit our website
- Includes full-body infant airway management trainer, auscultation chest skin, chest skin for practicing CPR, SmartScope™ remote, umbilical cord replacements with clamps, artificial blood, IV bag, spray pump lubricant, syringe needle, instruction manual, and hard carry case
- 5-year warranty



Pediatric Arm

Model No. : LF00958U Light
Sh. wt. 11 lbs.



- Exact reproduction of the arm of a 6-year-old child
- Practice venipuncture and intramuscular injection techniques and procedures used in young children
- Soft foam is used to simulate the deltoid muscle and allows the student to “get the feel” of administering intramuscular injections to children
- Simulated bone in the shoulder defines and limits the injection area
- Water may be used as an injection fluid in the shoulder area
- Includes a Life/form® arm, fluid supply bag, 3 cc syringe, 1 pint Life/form® blood, instruction manual, and hard carry case
- Fluid supply stand not included
- 5-year warranty
- Carton size: 22 in. x 11 in. x 6 in.

Consumables & replacement parts Model No.

Pediatric Arm Replacement Skin and Vein Kit
Sh. wt. 1.50 lbs.

LF00986U

Pediatric Arm Vein Replacements Only
Sh. wt. 0.25 lbs.

LF01056U



Follow us on



Advanced Nursing Laboratory



SEM TRAINERS & SYSTEMS

8849563724 | 9879103905

Shop No.7, Saibaba Apartment, Opp. Main Post Office,
Halar Road, Valsad-396001, Gujarat.



TERi™ Androgynous Geriatric Trainer

69

Option-1

Geriatric Patient Care Trainer

General patient care, daily living assistance simulation platform.

Model No. : LF04300 Light.
Sh. wt. 66 lbs.

Option-2

Geriatric Patient Skills Trainer

Physical skills practice simulation platform with injection/IV, catheterization, cardiovascular and respiratory support.

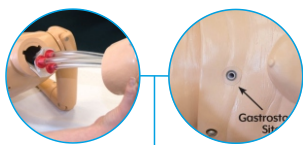
Model No. : LF04301 . Light.
Sh. wt. 74 lbs.

Option-3

Geriatric Patient Simulator

Comprehensive and complete simulation platform including patient monitoring capability.

Model No. : LF04302 . Light.
Sh. wt. 108 lbs.

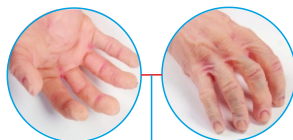


Nasogastric Tube Procedures^{2,3}

Placement, Lavage, Gavage, Feeding and Suctioning

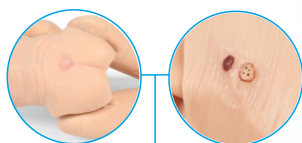


Intravenous, Injection, Subcutaneous Injection Sites^{2,3}, optional on 1 Multiple Locations Equipped with Standard Arm IM Injection Pads



PROM: Passive Range of Motion^{1,2,3}
Seating, Laying, Finger/Toe Manipulation with No Effort from Patient

Cardiovascular Support^{2,3}
Carotid Pulses, CPR with Quality Performance Metrics & Auscultation



Enhanced Aesthetics^{1,2,3}
Soft Silicone Skin with Noticeable Normal and Cancerous Skin Moles, Stage 1 Sacral Ulcer and Reddened Skin Folds



Grooming & Daily Living Assistance^{1,2,3}
Bathing, Clothing Changes, Denture Placement/Removal, Hearing Aid Placement/Removal, Eye Irrigation & Optic Drops, Ostomy & Urinary Catheter Care, Hair Care

Respiratory Support^{2,3}
Manual Ventilation with Chest Rise, Oxygen Administration, Tracheostomy Care, Airway/Trach Suctioning, Airway Intubation, Ventilation and Auscultation



Indwelling Male & Female Urinary Catheterization^{2,3}
Includes Support for Urethral and Suprapubic Catheters

Advanced Skills^{2,3}
Urinary Catheterization, Enema Administration, Pelvic and Prostate Examination

Seven cervical conditions are included:

- 1.) normal,
- 2.) early pregnancy,
- 3.) polyp,
- 4.) early cancer,
- 5.) late cancer, 6.) inflammation, and 7.) dysplasia

There are five prostates included with yoursimulator. 1.) normal size, 2.) normal size with hardnodule, 3.) enlarged on one side, 4.) enlarged across the midway with hard nodule, and 5.) enlarged with hard irregular surface early cancer, 5.) late cancer

TERi™ Androgynous Geriatric Trainer

- A comprehensive male/female elderly patient care trainer for medical simulation.
- Evolving from our GERi™/KERi™ full-body manikins, it has a more realistic look and feel accurately representing the human anatomy. Weight is distributed to represent a real patient for lifting and carrying. Height of TERi Manikin is 5 feet.
- Each version is affordable and durable with upgradable items.



SEM TRAINERS & SYSTEMS

☎ 8849563724 | 9879103905

Shop No.7, Saibaba Apartment, Opp. Main Post Office,
Halar Road, Valsad-396001, Gujarat.

Advanced Nursing Laboratory

semtrainersvalsad@gmail.com

www.semtrainers.com



Follow us on





TERi™ Androgynous Geriatric Trainer



Model No.		LF04300 Light	LF04301 Light	LF04302 Light
	Feature Set Capability	Geriatric Patient Care Trainer	Geriatric Patient Skills Trainer	Geriatric Patient Simulator
General	Superior range of motion	✓	✓	✓
	Enhanced full body aesthetics	✓	✓	✓
	Lightweight: 50 lbs.	✓	✓	✓
	Pupils	✓	✓	✓
	Male and female	✓	✓	✓
	Soft male and female genitalia	✓	✓	✓
Skin Care	Normal and cancerous moles	✓	✓	✓
	Stage I sacral ulcer	✓	✓	✓
	Reddened skin folds	✓	✓	✓
	Bandaging and wound dressing	✓	✓	✓
Movement Assistance, Fall Prevention and Care	Patient positioning	✓	✓	✓
Bathing	Clothing changes	✓	✓	✓
	Bed baths	✓	✓	✓
Grooming & Daily Living Assistance	Eye irrigation and optic drops	✓	✓	✓
	Dental care	✓	✓	✓
	Ear canal irrigation	✓	✓	✓
	Hearing aid	✓	✓	✓
	Hair care	✓	✓	✓
Nursing Care	Pericare	✓	✓	✓
	Ostomy care	✓	✓	✓
	Urinary catheter care	✓	✓	✓
	Stomas	✓	✓	✓
	Standard arms with injection sites	✓	✓	✓
	Support for oxygen administration	✓	✓	✓
	Left blood pressure arm (with radial pulse)	Option*	✓	✓
	Injection sites	Option*	✓	✓
Advanced Skills	Gastrostomy procedures		✓	✓
	Nasogastric tube procedures		✓	✓
	Respiratory support: tracheostomy care, airway/trach suctioning		✓	✓
	Urinary catheterization		✓	✓
	Enema administration (female)		✓	✓
	Pap smears (female)		✓	✓
	Pelvic examination (female)		✓	✓
	Prostate examination (male)		✓	✓
	Right IV arm trainer	Option*	✓	✓
	IV arm circulation pump	Option*	Option*	Option*
	Foot Assessment, Wound Care and Edema		✓	✓
ACLS/BLS	CPR with quality performance metrics		✓	✓
	Carotid pulse		✓	✓
	Articulating jaw	✓	✓	✓
	Intubation		✓	✓
	Ventilation		✓	✓
Advanced Nursing ACLS/BLS	Auscultation (heart and lung sounds)			✓
Monitoring & Therapeutics	Patient vital signs and monitored signals	Option ¹	Option ^{2,3}	✓ ³



GERi™ Complete Nursing Skills Manikin

Model No. LF04001 Sh. Wt. 28 lbs.

GERi™ has an elderly appearance with skin wrinkles and folds. Complete lifelike range of motion, realistic patient positioning, and non-pinching joints - moves like a person.

- Full-size adult manikin - measures 58 in.
- Overall female appearance
- Converts to male with removal of wig and attachment of male genitals

Visual Inspection:

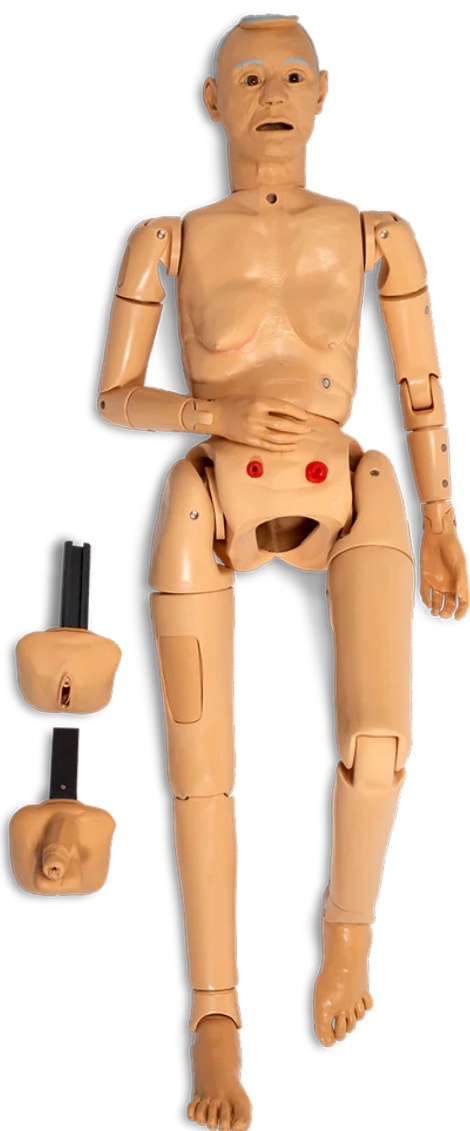
- Normal and Cancerous Mole
- Stage 1 Sacral Ulcer
- Dilated and Constricted pupils
- Reddened Skin Folds

Patient Care Simulation:

- Bandaging and Wound Dressing
- Bed Baths
- Clothing Changes
- Denture Placement and Removal, Upper and Lower
- Ear Canal Irrigation, Otic Drops, and Hearing Aid Placement
- Eye Irrigation
- Finger and Toe Manipulation with Bandaging - Flexible and Individually Molded
- Hair Care Washing and Combing
- Intramuscular Injection Sites: Arm, Thigh, Buttock
- Oral and Nasal Hygiene: Lavage, Gavage, and Suctioning
- Ostomy Care: Ileostomy and Colostomy Tissue
- Maintenance and Appliance Application, Lavage, and Suctioning
- Patient Positioning
- Patient Transfer Techniques
- Pericare
- Tracheostomy Care, Lavage and Suctioning

The complete GERi™ Manikin also includes:

- Gastrostomy Procedures, Lavage and Gavage
- Enema Administration, Female Only
- Urinary Catheterization, Female and Uncircumcised Male
- Pap Smears and Douching
- Prostate Exam, Stage B
- Nasogastric Tube Placement
- Internal Fluid Reservoirs



Ideal for OBRA Required Training. Carry case not included.
Five-Year Warranty.



SEM TRAINERS & SYSTEMS

☎ 8849563724 | 9879103905

Shop No.7, Saibaba Apartment, Opp. Main Post Office,
Halar Road, Valsad-396001, Gujarat.



SMART STAT with iPad

Model No. 101-8001



More advanced and simpler to use than other high-fidelity simulators in the same price range

Portable, flexible, and rugged iPad®* system offers the opportunity for a wide range of simulation training exercises across many medical disciplines, including:

- Disaster response
- Emergency medical response team
- Military battlefield
- Nursing school
- Physician
- University teaching hospital
- Paramedic
- Hospital and clinic training programs
- Nurse safety
- Wireless, tetherless patient simulator operates via iPad®* Wi-Fi® technology and utilizes simplified product control screens for ease of operations
- No programming experience or high-cost training required
- Unit can be operated within 5 minutes of exploring the iPad®* screens iPad®* allows recording of students' attempts at assessment and treatment of the patient simulator's physiological presentation
- Pull up any one of many scenarios for teaching and challenging students' abilities, and testing knowledge, proficiency, and critical-thinking skills
- Easily transfer records via PDF document to a PC for storing, printing, and using
- Durable simulator can be used indoors and outdoors in many environments
- Battery-operated simulator can be connected by wire to a local power source (110V or 220V AC versions) when doing clinical lab time where movement of the simulator is not necessary
- Simulator is 6 ft. (189 cm) tall with 46 in. (116 cm) chest, 32 in. (81 cm) inseam, 40 in. (101 cm) waist, 26 in. (66 cm) head circumference, and 18½ in. (47 cm) neck
- 1-year warranty (extended 2-year warranty available at time of purchase)


NOTE: Defibrillation with hands-free pad technology requires the use of a training cable furnished free; the item number depends upon defibrillation unit manufacturer and must be identified for inclusion in the shipment. Chest post adapters, also furnished with the patient simulator, are used in conjunction with the training cable.



Affordable patient simulator takes ALS training into the students' environment. Instructors can evaluate student knowledge, skill levels, and critical thinking abilities by utilizing the applications via the iPad®*

SMART STAT with iPad

Model No. 101-8001

 Simulaids Key Features	SMART STAT with iPad**	SMART STAT Basic with iPad**
Product Numbers	101-8000U / 101-8001U	101-8002U
Blood Pressure	Yes	Yes
Cardiac Rhythms	51 variations	51 variations
External vitals monitor for students	Yes	Yes
Lung Sound Sites	Yes – 6 anterior, 4 posterior	Yes – 6 anterior
Cardiac Sound Sites	Yes – 4	Yes – 4
Airway Management: Oral/Nasal	Yes	Yes
Stomach Rise/Auscultation Related to Airway Placement	Yes	Yes
Right Main Stem Intubation	Yes	Yes
Cricothyrotomy	Needle	Needle
Tracheotomy Care/Suctioning	Non-Surgical	Non-Surgical
Positive Ventilation	Yes	Yes
Sellick Maneuver	Yes	Yes
ETCO Flushing	Yes	No
Cyanosis/CO flushing	Both, on Lips/Fingers	No
Pulse Ox reading	Yes	No
Jaw thrust to clear airway	Yes	Yes
Breakaway Teeth	Yes	Yes
Spontaneous chest rise	Yes	Yes
ALS functions with cardioversion	Yes	Yes
Chest-Decompression/Drains/ Pericardiocentesis	Yes	Yes
Reactive Eyes	Yes	No
Convulsions/Seizures	Focal Seizures	No
CPR landmarks	Yes	Yes
Closed Chest Compressions	Yes	Yes
Anterior Pacing	Yes	Yes
ECG Leads	5 (optional 12 lead overlay)	5 (optional 12 lead overlay)
IV Access & IM	Yes	Yes
Phlebotomy and Arterial Access	Yes	No
I/O Access	FAST, Optional Leg & Humerus	Optional Leg & Humerus
Pulse Points	Yes – 12, reactive to BP	Yes – 12, reactive to BP
Edema: Tongue, Larynx	Yes	Yes
Fluid Management	Internal	external
Facial Fluids	3	0
Urinary Fluids/Catheterization	Yes	No
Bowel Sounds	Yes	No
Microphone Speech option	Wireless one way, Pre-Programmed	Wireless one way, Pre-Programmed
Simulator Controller	iPad**	iPad**
Wireless Control	Yes	Yes
Debriefing Support	Part of iPad** App	Part of iPad** App
Carrying System	Hard case with wheels	Hard case with wheels
Free video conference-based training	Scheduled as needed with client	Scheduled as needed with client

SMART STAT with iPad

Model No. 101-8001

Consumables & replacement parts		Model No.
Cricothyrotomy Replacement Skin Pkg. of 10. Sh. wt. 0.56 lbs.		101-424U
Pneumothorax Pads Pkg. of 4. Sh. wt. 1.25 lbs.		101-423U
IV Replacement Skin Sh. wt. 2 lbs.		140-390U
Replacement Vein Kit Sh. wt. 1.25 lbs.		101-101U
Injection Site Replacement, Arm Pkg. of 4. Sh. wt. 0.38 lbs.		101-302U
Injection Site Replacement, Thigh Pkg. of 4. Sh. wt. 0.25 lbs.		101-441U
Replacement Teeth Set of 3. Sh. wt. 1.25 lbs.		101-303U
Fluid Reservoir Replacement Bag Sh. wt. 0.19 lbs.		101-304U
Replacement Hand Skin Pkg. of 4. Sh. wt. 1.25 lbs.	For Right Hand	101-415U
	For Left Hand	101-416U
Replacement Elbow Skin Pkg. of 4. Sh. wt. 1.25 lbs.	For Right Elbow	101-417U
	For Left Elbow	101-419U
Replacement I/O Skin Pkg. of 4. Sh. wt. 1.25 lbs.		101-418U
Replacement Neck Skin Pkg. of 10. Sh. wt. 1.25 lbs.		101-426U
Male Genitalia Sh. wt. 1.25 lbs.		101-497U
Female Genitalia Sh. wt. 1.25 lbs.		101-498U
Replacement Pericardiocentesis Injection Site Pkg. of 10. Sh. wt. 2.25 lbs.		101-119U
Replacement External Jugular Neck Insert Sh. wt. 1.25 lbs.		101-412U
Blood Pressure Cuff Sh. wt. 1.25 lbs.	With Latex	101-422U
	Latex-Free	101-510U
Replacement Blood Pressure Cuff Sh. wt. 1.25 lbs.		101-601U
Battery LegNU Sh. wt. 11 lbs.		101-407
Battery Charger Sh. wt. 1.25 lbs.		101-544U



SKILLQUBE qubeZERO

Model No. : SQqubeZeroEX

qubeZERO is a generic version of a patient monitoring device.

qubeSERIES monitoring simulation system for your patient monitor/defibrillators.

Key Features:

- Full functional ECG-monitor interface
- CPR-mode, defibrillation, pacemaker
- Checklists and standard procedures for documentation
- Seamless integration with qubeAV mobile debriefing system
- Browser-based scenario editor, image, and video library
- Control of vital parameters by instructor
- Auscultation functionality, blood glucometer, thermometer with an assessment app

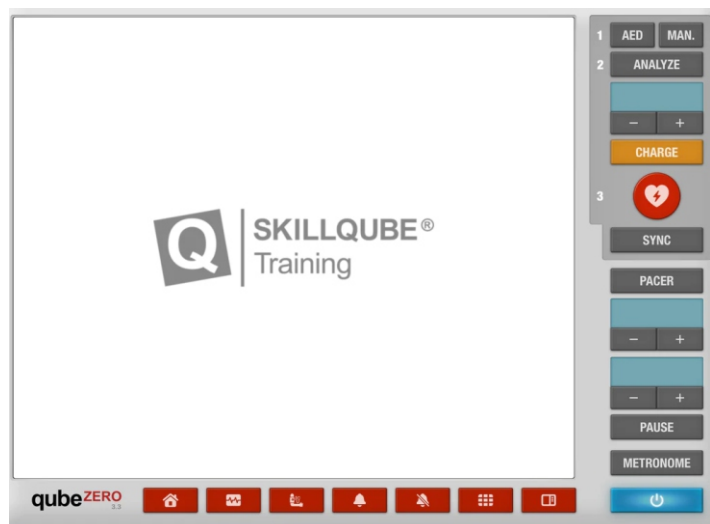
Product components:

- 1 software license for a monitor/device
- Hardware (frame, carry case, cables)
- Sensors: CPR feedback

Not included/must purchase the following separately:

iPad Pro 12.9" (5th Generation 2021, 128GB min)
 iPad 10.2" (9th Generation 2021, 64GB min)
 iPod 4" (7th Generation 2019, 32GB min)
 Dimensions: 24" x 15.75" x 11.5".

Sh. wt. 11.57 lbs without Apple hardware.





Deluxe Child CRiSis™ Manikin with ECG Simulator

Model No. LF03617 Sh. wt. 38 lbs.



- Complete PALS training capabilities in 1 manikin
- Simulating a 5-year-old child, it combines all of the skill stations on 1 manikin, making training more realistic and giving students an appreciation for the smaller scale of the patient
- Realistic anatomy and landmarks include a mouth, tongue, oral pharynx, epiglottis, arytenoids, vocal cords, trachea, and esophagus
- Manikin is 46 3/4 in. long and weighs 20-lbs.
- 5-year warranty

Features:

Airway Management

- Compatible airway management devices include E.T., E.O.A., E.T.L., L.M.A., E.G.T.A., CombitubeR, and King Systems
- Inflatable stomach bladder to indicate esophageal intubation
- Oral, nasal, and digital intubation capabilities
- Realistic anatomical features
- Separate left and right lungs for auscultation
- Suctioning capabilities

Blood Pressure Arm

- Auscultatory gap
- Systolic and diastolic levels, heart rate, and sound volume
- Palpable radial pulse
- Speaker in arm reproduces real blood pressure sounds
- 5 Korotkoff sounds

CPR

- Fully articulated head, neck, and jaw
- Jaw thrust
- Palpable and visual landmarks
- Palpable carotid pulse (manual)

IV Arm

- Articulated at the biceps for antecubital and dorsal access
- Realistic flashback from a pressurized system
- Replaceable skin and veins
- Smaller lumen tubing simulates the size of a child's veins

Defibrillation Chest

- Compatible with all standard brands and types of defibrillators, monitors, and patient simulators
- Internal load box absorbs full strength shock
- Manual, automatic, and semi-automatic defibrillation
- Pacing
- Rhythms are detected at 4 ECG sites and 2 defibrillation sites

Femoral Access

- Articulated leg requires proper positioning
- Palpable arterial pulse (manual)
- Palpable symphysis pubis and anterior superior iliac spine
- Realistic flashback from pressurized venous system
- Replaceable injection pad

Intraosseous Infusion

- Palpable landmarks include the patella, tibia, and tibial tuberosity
- Pressurized system allows aspiration of fluid
- Replaceable bones and skin

The addition of interactive ECG Arrhythmia Simulator

ECG simulator recreates 17 adult heart rhythms and 17 pediatric rhythms



STAT Baby Advanced

Model No. 101-8010 Sh. wt. 122 lbs.



- Utilizes easy-to-use iPad®* technology
- Gives the instructor control of the physiological features of the baby to deliver challenging training to develop student assessment skills and easily tracks sessions for later review and debriefing
- Manage student information, easily create alternate scenarios or use existing, and efficient records management of the training
- Satisfies every training need for post-neonatal care of pediatric patients
- iPad®* included
- Lifelike skin
- Accepts LMA, ET, OPA, NPA, and LT airways
- Sternal retraction
- Fully enclosed crib with waterproof surface
- 6 ft. (183 cm) tether assembly
- Heart sounds
- Lung sounds
- Voice sounds
- Spontaneous breathing
- 7 pulse points
- I/O leg
- 3 IV sites
- PICC access site
- IM/SQ injection sites
- Advanced intubation head with tongue edema and laryngospasm
- Pneumothorax reduction bilaterally
- 4-lead monitoring
- Chest tube insertion (left side only)
- Defibrillation
- Rectal medication
- Urinary catheterization
- 55 in. x 28 in. x 11 in.
- 1-year warranty

Consumables & replacement parts	Model No.
Leg Skin (1 Left and 1 Right) 1.25 lbs.	101-428U
Arm Skin (1 Left and 1 Right) 1.25 lbs.	101-429U
I/O Leg Bones (Pkg. of 12) 0.88 lbs.	101-431U
Arm/Hand Replacement Vein Kit 0.19 lbs.	101-095U
IV Replacement Vein Kit 1.25 lbs.	101-427U
Pneumothorax Pads (Pkg. of 4) 1.25 lbs.	101-430U
IM Injection Site (Pkg. of 4) 1.25 lbs.	101-432U
Subcutaneous Injection Site (Pkg. of 4) 1.25 lbs.	101-433U



SEM TRAINERS & SYSTEMS

☎ 8849563724 | 9879103905

Shop No.7, Saibaba Apartment, Opp. Main Post Office,
Halar Road, Valsad-396001, Gujarat.



C.H.A.R.L.I.E. Neonatal Resuscitation Simulator

Model No. LF01421 Sh. wt. 14 lbs.

Meet Baby C.H.A.R.L.I.E. and satisfy all your training requirements for NRP 7th edition

C : Compressions, Cardiac
H : Heat compatible
A : Airway, Arterial access via the umbilicus
R : Resuscitation
L : Laryngeal mask capable for oxygen use or PPV
I : Intravenous, Intraosseous, Intubation
E : ECG

Features:

- Airway, breathing, intubation, and ventilation
- Chest tube placement
- CPR
- ECG simulation (must have ECG simulator SVN-670 or SVN-102)
- Gastrointestinal (GI) tube
- Intraosseous infusion
- Observation and measurement
- Palpable manual pulse points in 7 locations
- Patent umbilicus with venous and arterial access
- PICC site in arm
- Urinary catheterization to use with interchangeable genitalia



C.H.A.R.L.I.E. Neonatal Resuscitation Simulator with Interactive ECG Simulator

- Defibrillation shock can be delivered through manikin or simulator
- Connect defibrillator/external pacer to simulator using adapters
- Built-in circuitry allows you to defibrillate and pace directly into the ECG simulator and observe ECG rhythms through the PADS connector
- Convert feature
- Select another rhythm to run immediately after defib discharge
- Pacing can be done on any manufacturer's defibrillator
- Battery saver feature powers-off simulator automatically when not in use
- 6 waveforms
- 17 adult/pediatric rhythms



SEM TRAINERS & SYSTEMS

8849563724 | 9879103905

Shop No.7, Saibaba Apartment, Opp. Main Post Office,
Halar Road, Valsad-396001, Gujarat.



C.H.A.R.L.I.E. Neonatal Resuscitation Simulator

Model No. LF01421 Sh. wt. 14 lbs.

• C.H.A.R.L.I.E. comes complete with:

- Airways, 2, standard and advanced
- Baby powder
- Blood
- Carry bag
- Defibrillation chest
- Intraosseous bones and skin
- IV bag
- IV skin and veins for hand and foot
- Male and female genitalia
- Myelomeningocele
- Needles
- Omphalocele
- Umbilicus
- Instruction manual
- 5-year warranty

Consumables & replacement parts	Model No.
Bilateral Chest Insert Sh. wt. 0.63 lbs.	LF01401U
Unilateral Chest Insert Sh. wt. 0.63 lbs.	LF01402U
Replacement Airway Sh. wt. 0.25 lbs.	LF01403U
Replacement IV Hand Skin and Vein Sh. wt. 0.06 lbs.	LF01404U
Replacement IV Foot Skin and Vein Sh. wt. 0.06 lbs.	LF01405U
Umbilicus with Pulse Sh. wt. 0.06 lbs.	LF01412U
Birth Defects Sh. wt. 0.56 lbs.	LF01407U
Replacement Advanced Airway Sh. wt. 0.38 lbs.	LF01408U
Defibrillation Chest Sh. wt. 0.50 lbs.	LF01409U
Replacement Genitalia Male and female. Sh. wt. 0.50 lbs.	LF01410U
Replacement I/O Skin Sh. wt. 0.50 lbs.	LF01411U
I/O Bone and Blood Capsule Pkg. of 12. Sh. wt. 2 lbs.	101-092U





Infant IV Arm

Model No. : LF03637U Sh. wt. 2.50 lbs.



- **Life/form® Infant IV Arm**
- Special, extremely thin, synthetic skin, and tubing with appropriately small lumen and thin walls
- Cephalic and basilic vein are accessible, as well as the dorsal venous arch on the hand
- Includes 2 IV bags with clamps, 1 pint blood, and winged infusion set
- 5-year warranty

Consumables & replacement parts	Model No.
Infant IV Arm Replacement Skin and Veins Sh. wt. 2.50 lbs.	LF03641U
Blood Quart. Sh. wt. 0.38 lbs. Gallon. Sh. wt. 0.88 lbs.	LF00845U LF00846U
Fluid Supply Bag 500 ml. Sh. wt. 0.31 lbs.	LF01130U
Fluid Supply Stand • 5 in. x 8 in. base, 5/16 in. steel hooked rod Sh. wt. 4 lbs.	LF01022U



Clinical Chloe™ Advanced Patient Care Simulator

Model No. SB51891 L Sh. wt. 50 lbs.



General Patient Care

- Articulating head, jaw, elbows, wrists, knees, and ankles
- Bathing and bandaging activity
- Enema administration capability
- Full body with soft realistic face skin, hands, feet, fingers, and toes
- Interchangeable male and female organs
- Manual palpable pulses
- Realistic eyes for ophthalmic exercises open and close (1 pupil is dilated)
- Realistic urethral passage and bladder for catheterization exercises
- Set of 2 decubitus ulcers
- Simulated ear canal for otic drops and irrigation
- Stylish wig for hair care exercises and surgical draping
- Transverse colostomy, ileostomy, and suprapubic stomas to practice irrigation
- Ulcerated foot
- Upper and lower dentures for oral hygiene

Breast Palpation

- Breast palpation capability with 1 abnormal breast
- Interchangeable male and female breast inserts

CPR

- OMNI® Code Blue® Pack included to monitor compressions and airway ventilations
- Practice BVM with realistic chest rise
- Practice CPR
- Realistic heart, lungs, ribs, stomach, and liver for unparalleled CPR performance

Airway

- Anatomically accurate airway
- Nasal and oral tube placement
- NG and OG tube feeding and gastric suction
- Tongue, epiglottis, vocal cords, and esophagus look and feel real
- Trachea, bronchi, and lungs enable assessment of airway management skills
- Tracheotomy intubation with replaceable trachea
- Tracheotomy placement

Injection Training

- Advanced training arm and hand for IV, IM, and sub-Q techniques
- Intramuscular injection sites in arm, thighs, and buttock

GYN Training

- Vaginal douching and Pap smear exercises with realistic vagina and cervix

Other

- Bends and detaches at waist for easy storage
- Carrying bag
- Detachable and removable internal tanks
- Instruction manual
- Latch provides secure seal between ostomies and internal tanks
- Neck brace
- 1-year warranty



SEM TRAINERS & SYSTEMS

☎ 8849563724 | 9879103905

Shop No.7, Saibaba Apartment, Opp. Main Post Office,
Halar Road, Valsad-396001, Gujarat.





Trauma Manikin Moulage Kit

Model No. 800-6701 Ship weight 9 lbs.



Size 13" x 13" x 12". Ship weight 9 lbs.

Can be used with any Rescue manikin, the WMD/CBRNE/DECON Full-Body Trainer (101-088FBU), or the Trauma CPR Manikin (100-2700U), (100-2725U). Application of these realistic bleeding moulages to a full-body manikin facilitates quick identification, diagnosis, and dressing of wounds by trainees. Kit includes compound fractures, contusions, lacerations, evisceration, sucking chest wound, impalement, crushed foot, jaw wound, and projectile entry and exit of arm. These bleeding wounds strap on and are complete with pump assembly. Simulated blood is included. Non-bleeding strap-on wounds include 2nd and 3rd degree burns of the chest, back, forearm, and face. Manikin sold separately.

The kit contains a big variety of bleeding and non-bleeding wounds. A perfect kit to be added to a manikin.

Bleeding wounds (complete with reservoir bags with pump assembly):

- 1 sucking wound of chest
- 1 laceration of the forearm
- 1 broken clavicle with seat belt contusion
- 1 projectile entry & exit of arm
- 1 impalement of lower leg
- 1 crushed foot
- 1 jaw wound (manikin use only)
- 1 laceration of the forehead (manikin use only)
- 1 compound fracture of humerus
- 1 compound fracture of femur
- 1 compound fracture of tibia
- 1 abdominal wound with protruding intestines
- 1 pkg. blood powder for 4.5 litre simulated blood

Non-bleeding wounds:

- 2nd & 3rd degree burn of the chest
- 2nd & 3rd degree burn of the back
- 2nd & 3rd degree burn of the hand
- 2nd & 3rd degree burn of the forearm
- 1 burn of face (manikin use only)



EMT Casualty Simulation Kit

Model No. 800-818 Ship weight 33 lbs.



The EMT Kit kit has the largest variety of strap-on wounds for ease in getting the most impact with the least skill used during incident training preparation. Additional stick-on wounds and makeup accessories that allow for more detailed enhancement round out this kit.

Contents:

Bleeding strap-on wounds complete with reservoir bags with pump assembly

- 1 jaw wound (#6807)
- 1 abdominal wound with protruding intestines (#6808)
- 2 compound fractures of humerus, upper arm (#6816 each)
- 2 compound fractures of femur, upper leg (#6819 each)
- 1 laceration of forehead (#6725)
- 1 leg amputation (#6760)
- 2 compound fractures of tibia, lower leg (#6761 each)
- 2 gunshot wounds of palm (#6881 each)

Non-Bleeding Simulated Wounds:

- 1 phosphorous burn of hand (#6801)
- 1 sucking wound of chest (#6713)
- 1 face in shock (#6882)
- 1st, 2nd & 3rd degree burn of face (#6828)
- 1st, 2nd & 3rd degree burn of chest (#6724)
- 1st, 2nd & 3rd degree burn of back (#6773)
- 1st, 2nd & 3rd degree burn of hand (#6799)
- 1st, 2nd & 3rd degree burn of forearm (#6802)
- 36 assorted stick-on lacerations & open fracture wounds (reorder #219, 1 doz.)

Makeup Accessories:

- 1 body adhesive for stick-on wounds (#PP2159)
- 2 casualty simulation wax (#223, 1 container)
- 3 bottles coagulant makeup blood (#226, 1 bottle)
- 5 pkgs. powder to make 5 gallons simulated blood (#225, 1 pkg.)
- 1 pkg. of methyl cellulose for blood thickening (#228)
- 1 ea. grease paint colors: white (#220), blue (#222), brown (#221), and red (#218)
- 2 pkg. broken Plexiglas® for simulating glass embedded wound (#230, 1 pkg.)
- 1 container cold cream (#851)
- 2 atomizer mist sprayers (#839 ea.)
- 1 ea. Plastalene Modeling Paste, white (#856)
- 1 ea. Plastalene Modeling Paste, dark (#855)
- 6 tongue depressors (reorder #842, pk. of 100)
- 1 tissue (#844)
- 1 fake dirt (#233)
- 1 charcoal (#854)
- 1 petroleum jelly (#239)
- 1 mirror (#838)
- 2 spatulas (reorder #835, pkg. of 6)

Size: 24" x 9" x 20".



SEM TRAINERS & SYSTEMS

☎ 8849563724 | 9879103905

Shop No.7, Saibaba Apartment, Opp. Main Post Office,
Halar Road, Valsad-396001, Gujarat.





Tension Pneumothorax Simulator

Model No.150-1800 Sh wt. 9 lbs.



This model allows medical personnel to practice proper needle insertion which enables built-up air pressure to escape the thorax.

The model accepts needle and thoracotomy in second intercostal space in the midclavicular line or fifth intercostal space in the midaxillary line.

Complete with foot pump, replacement 2-piece pleural chamber, rib cage, and soft lifelike skin. Soft carry bag included. Procedural needle not included.

Size: 19" x 19" x 9".



Chester Chest™ with Peripheral Port Access Arm

Model No. : SB18636 Sh. wt. 11 lbs.

External Central Catheter

- Pre-positioned, surgically placed in the right chest
- Subcutaneous tunnel is visible up to and just over the clavicle
- Distinguishable Dacron® cuff
- Distal catheter end is pre-attached to the blood reservoir bag

Implanted Vascular Access Device

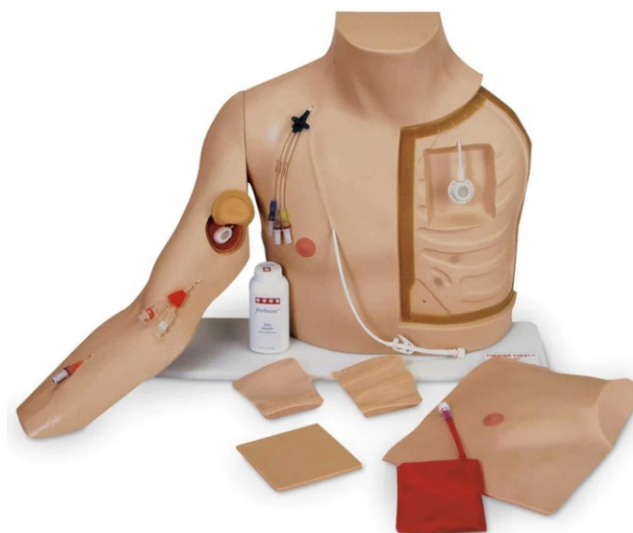
- Located in the left chest under a specially formulated flap designed to simulate real human tissue
- Situated over a rigid underlying surface with molded ribs and a recessed area for the
- interchangeable inserts
- 3 difficult accessing inserts placed either under or over the port to simulate palpating and accessing a port with one of the following types of placements: normal, "tipping," "wandering," or "deeply placed"

Peripheral Placed Central Catheter

- Located in the rotated, extended, detachable right arm
- Dual lumen 5FR PICC exits the slightly raised, basilic vein on the right inner biceps
- Pre-positioned 20G IV catheter in the right forearm
- Catheters are pre-attached to a blood reservoir bag
- Complete blood draws, heparinization, and fluid infusion while attached or
- unattached to the torso

Additional Capabilities:

- Subclavian catheter
- Triple lumen catheter
- Jugular catheter



Chester Chest™ with Peripheral Port Access Arm

- Also has recessed area posterior to PICC insertion site for optional peripheral port (peripheral port sold separately at right)
- Base of recessed area is made of soft material that permits port to "float" when accessed
- When placed over port, included tissue flap allows for a realistic feel when palpating and accessing

Consumables & replacement parts	Model No.
Chest Tissue Flap Replacement	SB41587U
<ul style="list-style-type: none"> • Duplicates the feel of human tissue • Place chest tissue flap over chest port for realistic practice of palpating and accessing • Proper access of the port is confirmed by a "blood" withdrawal • Maintains integrity even after numerous needle insertions • Replacement chest tissue flap for all • Chester Chest™ versions listed above • 11 1/2 in. x 8 in. Sh. wt. 2.25 lbs. 	

Consumables & replacement parts	Model No.
Carry Case • Soft-sided • 21 1/2 in. x 17 in. x 16 1/2 in. Sh. wt. 5 lbs.	SB29116U
Blood Bag Reservoir for Chester Chest™ Sh. wt. 0.25 lbs.	SB46515U
Practice Port • A real practice port with 9.6 FR catheter for the left side of Chester Chest™ Sh. wt. 2.50 lbs.	SB41588U
Universal Catheter Connector • For use with 9.6 FR catheter Sh. wt. 0.50 lbs.	SB50699U



Peter PICC Line™

Model No. : SB20132 Sh. wt. 12 lbs.



- Portable teaching model has translucent arm skin that allows the visualization of the anatomically correct cephalic, basilic, and median basilic veins
- Axillary jugular, subclavian, and superior vena cava veins are also present, plus a movable chin simulates the occlusion of the jugular to prevent the Peripherally Inserted Central Catheter Line (PICC) from taking this path
- Palpable ribs permit practice in measuring proper catheter length to the correct intercostal space
- Permits the measurement of catheter length outside of the body and the confirmation of proper placement by viewing the distal tip of the catheter in the viewable superior vena cava
- Replaceable, barely translucent arm skin allows visualization of underlying veins
- Includes soft carry case

Consumables & replacement parts	Model No.
Arm Skin Replacement Sh. wt. 0.38 lbs.	SB41585U
Body Skin Replacement. Sh. wt. 1.75 lbs.	SB41586U
Arm Vein Tubing Set Sh. wt. 0.31 lbs.	SB41583U





Pericardiocentesis Simulator with Chest Tube and Pneumothorax

Model No. : LF03769 Sh. wt. 27 lbs.



- Designed specifically to teach the skills needed to perform this difficult procedure correctly, as well as ongoing chest tube maintenance and the management of pre-hospital chest trauma
- Pressurized tension pneumothorax site and a site for the surgical placement of a functional chest tube
- Fluid color, volume, and viscosity can be varied
- May be used with any commercially available closed water seal drainage unit
- Pericardiocentesis may be performed in the left subxiphoid space and in the left fifth intercostal space
- Accurate placement of the needle will allow for the withdrawal of fluid from the simulated pericardium
- Includes fluid reservoir bag, foot pump, surgical skin pads, subcutaneous surgical pads, nurse training pads, pneumothorax pads, blood powder, thickener, simulated pericardium, IV bag, instruction manual, and hard carry case
- Fluid supply stand not included
- 5-year warranty



Spinal Injection Simulator

Model No. : LF01036 Sh. wt. 27 lbs.



- Approaches include spinal anesthesia, spinal tap, epidural analgesia, caudal analgesia, sacral nerve block, and lumbar sympathetic block
- Easy-to-change vertebral column and replaceable skin
- Features proper resistance in needle puncture and accurate palpation reference points
- Spinal column can be charged with fluid
- Sitting or lateral positions for injection practice
- L1 and L2 sections of the vertebral column are visible
- Functional section includes L3-L5 vertebrae, plus the sacrum and coccyx
- Includes a fluid supply bag with connectors, instruction manual, and hard carry case
- Fluid supply stand and needle not included
- 5-year warranty

Consumables & replacement parts	Model No.
Spinal Replacement Kit Skin, musculatures, and spinal cord Sh. wt. 1.75 lbs.	LF01039U
Lubricant Kit — Pkg. of 6 2-oz. bottles Sh. wt. 0.88 lbs.	LF00985U
Fluid Supply Stand Sh. wt. 4 lbs.	LF01022U
Fluid Administration Set Fluid bag with tubing and a fitting Sh. wt. 0.25 lbs.	LF01098U



SEM TRAINERS & SYSTEMS

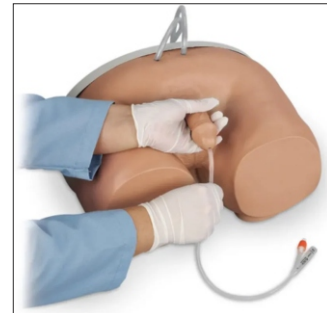
8849563724 | 9879103905

Shop No.7, Saibaba Apartment, Opp. Main Post Office,
Halar Road, Valsad-396001, Gujarat.



Infant Male and Female Catheterization

Model No. LF01035 Sh. wt. 2 lbs.



- 2-in-1 trainer that provides realistic practice of this difficult skills procedure
- Anatomically realistic with both male and female genitals
- Feel resistance and pressure as with a real patient
- Genitals made of soft, lifelike material
- Lower half of infant only
- Practice both male and female infant catheterization training
- Practice insertion, position, catheter balloon inflation and deflation
- Urine flows when catheter is in proper position
- Includes infant torso, 1 male and 1 female genital insert, 2 oz. lubricant, infant Foley catheter, and instruction manual
- 5-year warranty

Consumables & replacement parts	Model No.
Replacement Genital Inserts Sh. wt. 0.38 lbs.	
Female	LF01035(A)U
Male	LF01035(B)U
Replacement Bladder Tube Sh. wt. 0.06 lbs.	LF01221U
Infant Intermittent Catheter	LF01074U
• 6 in., 8 F Each. Sh. wt. 0.19 lbs.	
Pkg. of 10. Sh. wt. 0.44 lbs.	LF01074(A)U
Lubricant Kit Sh. wt. 0.88 lbs.	LF00985U
• 2-oz. bottles	
• Pkg. of 6	



Enema Administration Simulator

Model No. LF00957 Sh. wt. 19 lbs.



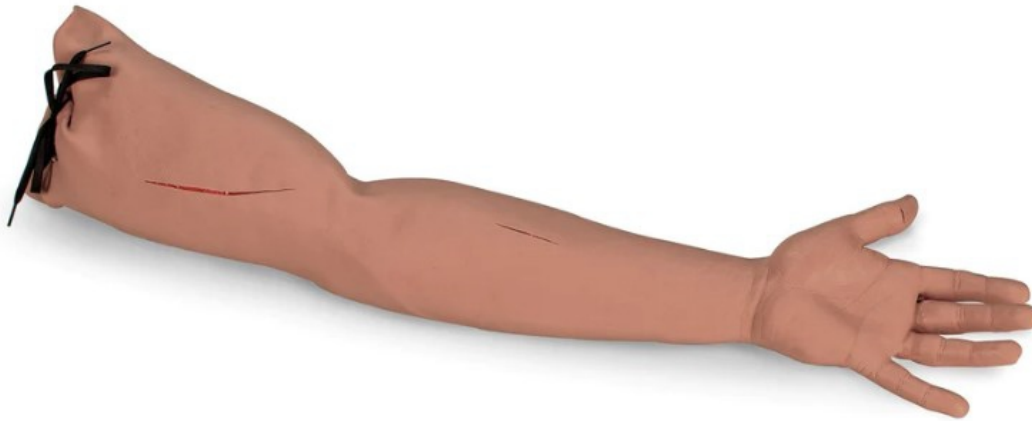
- Use for group demonstrations and practice sessions of any size
- Realistically practice administering an enema using this lifelike model
- Standard enema procedures can be performed using conventional enema apparatus — no special equipment is required
- All aspects of the simulator are realistic in every detail
- Upper buttock is flexible so the trainee must raise the buttock in order to locate and make insertion into the anus
- Drain tube is provided so fluid can be drained directly into a large container or sink
- Includes enema administration set, instruction manual, and hard carry case
- 5-year warranty

Consumables & replacement parts	Model No.
Hevi-Lube Sh. wt. 0.94 lbs. • Specially formulated, highly concentrated lubricant for exclusive use with Life/form® Enema Administration Simulator only • Pint bottle	LF01050U
Fluid Supply Stand Sh. wt. 4 lbs. • 5 in. x 8 in. base, 5/16 in. steel hooked rod	LF01022U
Fluid Administration Set Sh. wt. 0.25 lbs. • Includes fluid bag with tubing and a fitting	LF01098U
Replacement Tubing Sh. wt. 0.31 lbs.	LF01024U
Nasco Cleaner Sh. wt. 0.88 lbs. • Use to remove stubborn stains from Life/form® simulators • 12-oz. bottle	LF09919U



Suture and Stapling Practice Arm

Model No. LF01028 Sh. wt. 2.75 lbs.



- The Suture and Stapling Practice Arm is made with a soft vinyl skin over a core of stitchable foam to provide a lifelike suturing experience for students or a realistic suturing demonstration by an instructor.
- Realistic skin texture with wrinkles, pores, and visible fingerprints. Soft and pliable for easy sewing, the skin is tough enough that sutures will not pull out when tightened.
- The unit is provided with three "wounds." These "wounds" can be sutured repeatedly until the skin around them is finally worn out then, new "wounds" can be cut. Although disposable, the arm provides hundreds of suturing experiences before wearing out.
- Over one hundred cuts can be made on the trainer and each of these cuts can be sutured several times.
- Comes complete with a starter package of sutures and instruction booklet.

Consumables & replacement parts	Model No.
Suture Replacement Each. Sh. wt. 0.19 lbs. • Includes 4-0 reverse cutting nylon suture	LF07000U
Pkg. of 5. Sh. wt. 1.25 lbs.	LF07000(A)U
Suture Tool Kit with Case Only Sh. wt. 0.38 lbs.	LF01011U
Mayo Hegar Needle Holder Sh. wt. 0.19 lbs. • Highly polished stainless steel • Box lock narrow jaw, serrated and indented • Ratchet lock handle • 6 in. long	C00879U



Suture and Stapling Practice Leg

Model No. LF01034 Sh. wt. 5.50 lbs.



The Suture and Stapling Practice Leg is made with a soft vinyl skin over a core of stitchable foam to provide a lifelike suturing experience for students or a realistic suturing demonstration by an instructor.

Realistic skin texture with wrinkles, pores, and visible fingerprints. Soft and pliable for easy sewing, the skin is tough enough that sutures will not pull out when tightened.

The unit is provided with three "wounds." These "wounds" can be sutured repeatedly until the skin around them is finally worn out then, new "wounds" can be cut.

Although disposable, the leg provides hundreds of suturing experiences before wearing out. Conservatively, over one hundred cuts can be made on the trainer and each of these cuts can be sutured several times.

Comes complete with a starter package of sutures and instruction booklet.

Consumables & replacement parts	Model No.
Suture Replacement Each. Sh. wt. 0.19 lbs. • Includes 4-0 reverse cutting nylon suture	LF07000U
Pkg. of 5. Sh. wt. 1.25 lbs.	LF07000(A)U
Suture Tool Kit with Case Only Sh. wt. 0.38 lbs.	LF01011U
Mayo Hegar Needle Holder Sh. wt. 0.19 lbs. • Highly polished stainless steel • Box lock narrow jaw, serrated and indented • Ratchet lock handle • 6 in. long	C00879U



Pediatric Suture Head Kit

Model No. LF01047 Sh. wt. 9.50 lbs.



Life/form® Pediatric Suture Head Kit

- Practice draping and bedside skills as well
- Soft, lifelike skin can be cut and sutured hundreds of times, then simply replaced over the permanent core and base
- Includes scalpel, forceps, needle holder and scissors in a soft case, 1 nylon suture, simulated blood, and baby powder
- 5-year warranty

Consumables & replacement parts

Model No.

Replacement Pediatric Head Skin

- Includes 1 replacement pediatric head skin Sh. wt. 2.50 lbs.

LF01047(A)U



Episiotomy Suturing Simulators - Set of 3

Model No. LF00690 Sh. wt. 2 lbs.



- Simulators provide a realistic way for students to learn good surgical techniques and a variety of repair experiences
- Can be used by the student in a learning lab with an instructor, or by the student individually in the clinical setting
- In addition to being portable, the lifelike texture allows the learner to develop a “feel” for instrument handling, tension on suture, and the advantages of one method of tying knots over another
- Each simulator includes an instruction manual and is individually boxed
- 5-year warranty

Consumables & replacement parts	Model No.
Suture Thread with Needle Each. Sh. wt. 0.19 lbs. Pkg. of 5. Sh. wt. 1.25 lbs.	LF07000U LF07000(A)U
Mayo Hegar Needle Holder Sh. wt. 0.19 lbs. • Highly polished stainless steel • Box lock narrow jaw, serrated and indented • Ratchet lock handle • 6 in. L	C00879U
Suture Tool Kit with Case Only Sh. wt. 0.38 lbs.	LF01011U



Suture Kit

Model No. LF01042 Sh. wt. 2.75 lbs.



Make incisions and determine the depth of suturing and the technique to be used

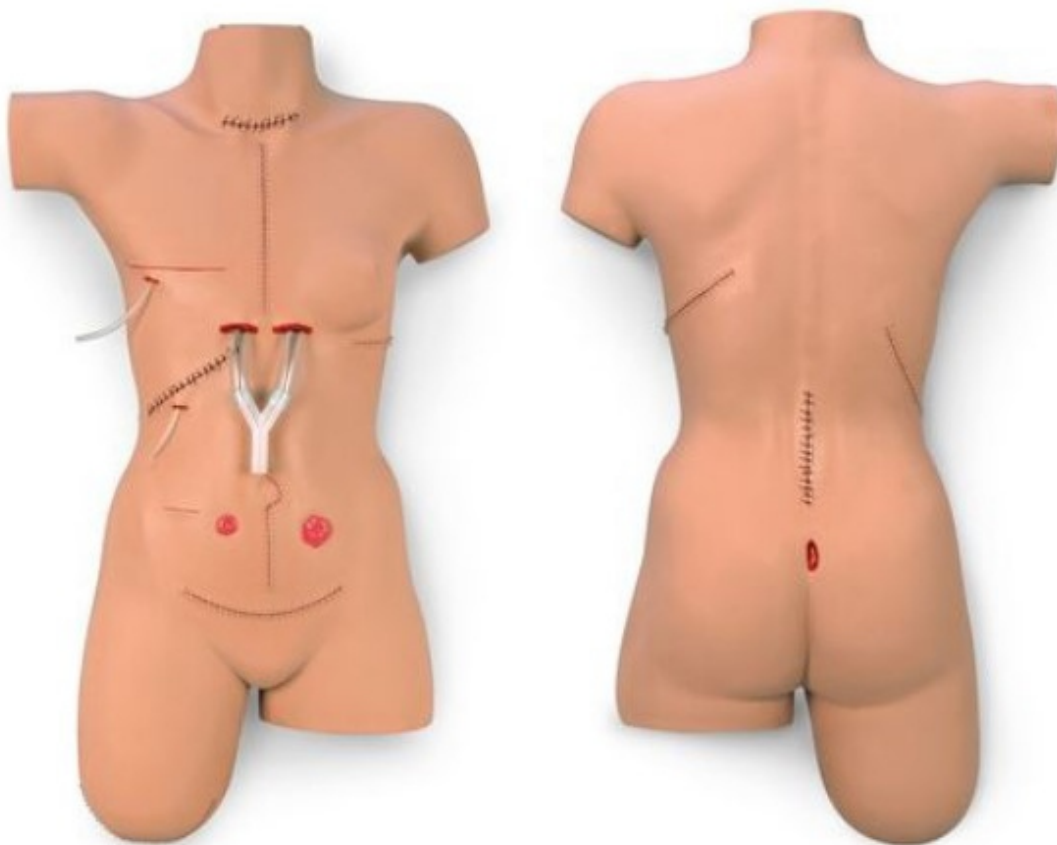
- Practice and demonstrate tying knots, stapling and placement of staples, use of surgical glue, suturing deep tissue (placement and closure), and suturing subcutaneous tissue (placement and closure)
- Features epidermis, dermis, fascia, fat, and muscle layers
- Skin will allow placement and closure of superficial sutures
- Includes suture pad, tray to hold pad (not shown), durable carry case, needle holder, suture scissors, tissue forceps, scalpel, nylon suture, and small carry case to hold the instruments
- Pad measures 6 in. L x 4 in. W x 1 1/2 in. D
- 5-year warranty

Consumables & replacement parts	Model No.
Life/form® Suture Replacement Pad Light. Each. Sh. wt. 1.50 lbs. Light. Pkg. of 10. Sh. wt. 14 lbs.	LF01043U LF01043(A)U
Suture Replacement • Includes 4-0 reverse cutting nylon suture Each. Sh. wt. 0.19 lbs. Pkg. of 5. Sh. wt. 1.25 lbs.	LF07000U LF07000(A)U
Suture Tool Kit with Case Only Sh. wt. 0.38 lbs.	LF01011U



“Surgical Sally” Bandaging Simulator

Model No. LF00929 Sh. wt. 26 lbs.



- Female “patient” with 14 surgical wounds including an abdominal hysterectomy, appendectomy, cholecystectomy with simulated T-tube, colostomy, ileostomy, laminectomy, laparotomy, leg amputation stump, mastectomy with simulated drain, mid-sternal split with simulated drains, nephrectomy, thoracotomy, thyroidectomy, and sacral decubitus ulcer — stage 2
- Conveniently practice wound management skills, dressing changes, and bandaging techniques
- Flexible, flesh-colored skin realistically responds to adhesives and all types of bandaging procedures
- Skin with realistic look and feel has been reformulated so it is drier, allowing the bandages to adhere better
- 29 in. L x 17 in. W x 8 in. D
- Includes hard carry case
- Staples and sutures cannot be removed
- 5-year warranty



First Aid Arm

Model No. LF01005 Sh. wt. 21 lbs.



- Make synthetic blood flow from the cut on the forearm, the severed thumb, or from both at the same time
- Regulate rate of bleeding and create venous or arterial flow
- Blood returns to collection tray for reuse
- Pressure points function realistically at wrist and upper arm
- Includes arm with wound, severed thumb, collection tray, arterial pulse bulb, venous supply bag, 1 quart Life/form® blood, instruction manual, and hard carry case
- Fluid supply stand not included
- 5-year warranty

Consumables & replacement parts	Model No.
Venous Blood Quart. Sh. wt. 0.38 lbs. Gallon. Sh. wt. 0.88 lbs.	LF00845U LF00846U
Fluid Supply Stand 5 in. x 8 in. base, 5/16 in. steel hooked rod Sh. wt. 4 lbs.	LF01022U
Fluid Supply Bag 500 ml Sh. wt. 0.38 lbs.	LF01017U



Breast Examination Simulator

Model No. LF00984 Sh. wt. 6.50 lbs.



- Special skin creates a lifelike look and feel
- Realistic fluid breast mass allows displacement of breast tissue under palpation almost exactly as it occurs in a live patient
- Left breast has a small nodule in the upper outer quadrant and a fibroadenoma in the lower inside quadrant
- Right breast has a fixed lump in the upper outer quadrant, and a fluid-filled cyst in the lower inside quadrant
- Practice all phases of breast examination in both a sitting and supine position
- Lightweight simulator designed with a concave back to allow ease in demonstrating or practicing palpation techniques
- Use as a body overlay or attach to body for a standing examination
- Includes a neck strap (3-ft. long) and a waist strap (4-ft. long) that are adjustable and can be strapped on, instruction
- manual, American Cancer Society Guide to Breast Examination, and storage box
- 5-year warranty

Consumables & replacement parts	Model No.
Breast Replacement, Right <ul style="list-style-type: none">• Contains fixed lump, fluid filled cyst, and round lump Sh. wt. 1.50 lbs.	LF01014U
Breast Replacement, Left <ul style="list-style-type: none">• Contains small nodularity and fibroadenoma Sh. wt. 1.50 lbs.	LF01015U



Cervical Dilatation and Effacement Simulators

Model No. LF01068 Sh. wt. 19 lbs.



- 3-D simulators provide lifelike simulation of cervical examination prior to birth
- Visual and tactile sensations experienced provide a positive transition to patient procedures
- Set consists of 6 separate 4 in. W x 4 1/4 in. H x 4 3/4 in. D pelvic blocks
- External appearance of all 6 blocks is identical, with the variations being in the internal structure
- Represents internal texture, tissue density, and correct anatomical size
- Simulators depict 6 different cervical conditions prior to birth; each is clearly identified on the back side to indicate which condition exists internally
- Gain a tactile understanding of no dilatation, 2 cm, 5 cm, 7 cm, 9 cm, and effacement conditions
- Includes 6 simulation blocks (Stages 1-6), acrylic stand, glove, powder, lubricant, instruction card, and a hard carry case
- 5-year warranty



Advanced Pelvic Examination and Gynecological Simulator

Model No. LF01235 Sh. wt. 24 lbs.



- Ideal for all aspects of gynecological education, training, and competency evaluation, including the bimanual exam, speculum exam, and cytology sampling
- Unprecedented realism of internal and external features
- Interchangeable components make up its unique modular system
- You choose the scenarios
- Components can be combined in a multitude of ways
- Flexibility of customizing your scenarios with use of included makeup, blood, and thickener
- Additional specialized modules are also available (STD, post-menopause, S.A.N.E., and pre-puberty)
- Completely washable, disassembles for easy cleaning
- Starter unit includes torso, normal genital pad, normal pelvic organ block with vagina and rectum, abdominal gel pad, fabric abdominal pad, abdominal overlay skin, 7 uterus/cervix pieces (normal/normal with discharge option, retroverted/cervicitis, cancer/cancer, transparent IUD trainer, post-menopause/herpes, fibroids/polyp, early pregnancy), 5 detachable ovaries (normal, polycystic, small cyst, large adnexal mass), bladder insert, pelvic organ prolapse insert, baby powder, Injury Shades Makeup Wheel, Primary Colors Makeup Wheel, blood mix, thickener, syringe, lubricant, instruction manual, and hard carrying case
- 5-year warranty

Consumables & replacement parts	Model No.
Replacement Abdominal Skin Overlay Sh. wt. 0.88 lbs.	LF01236U
Replacement Organ Block Sh. wt. 0.88 lbs.	LF01237U
Replacement Genital Pad Sh. wt. 0.69 lbs.	LF01238U
Replacement Uterus, Set of 7 Sh. wt. 1.25 lbs.	LF01239U
Replacement Ovary, Set of 5 Sh. wt. 0.38 lbs.	LF01240U
Replacement Bladder/Prolapse Inserts, Set of 2 Sh. wt. 0.38 lbs.	LF01241U
Replacement Fabric Abdominal Pad Sh. wt. 0.31 lbs.	LF01242U
Replacement Abdominal Gel Pad Sh. wt. 2.75 lbs.	LF01243U
Injury Shades Grease Paint Makeup Wheel • Contains 6 colors commonly used to create bruises and contusions: warm, honey, maroon, dark purple, yellow, forest green, and thunder gray • 1-oz. wheel Sh. wt. 0.19 lbs.	LF00760U
Primary Colors Grease Paint Makeup Wheel • 1-oz. wheel includes 5 colors: white, black, red, yellow, and blue Sh. wt. 0.19 lbs.	LF00761U



SEM TRAINERS & SYSTEMS

8849563724 | 9879103905

Shop No.7, Saibaba Apartment, Opp. Main Post Office,
Halar Road, Valsad-396001, Gujarat.



Lucy Maternal and Neonatal Birthing Simulator - Basic

Model No. LF00042 Sh. wt. 72 lbs.



- Designed to present the complex needs of a growing demographic with unique health and physical challenges
- A new level of physical realism allows a near-human connection and enhances the immersion in training
- Provides a comprehensive and economical birthing experience from prenatal to postnatal delivery scenarios
- Experience realistic normal and abnormal deliveries

Functions

- Airway management - intubation and ventilation with chest rise
- Amniotic sac
- Articulating arms and legs
- Articulating baby - 18 in. (45 cm) long, 22-lb. (1 kg) weight
- Birthing positions - hands and knees, lateral, supine
- Breech deliveries - complete, incomplete, Footling, and Frank
- Cervical dilation - 6 stages
- Cesarean section delivery
- CPR
- Deliveries - vaginal, cesarean, forceps-assisted, and vacuum-assisted
- Episiotomy repair
- External version
- Fetal palpation - abdominal and Leopold's maneuvers
- Fetal suction
- Fundal massage
- Intramuscular injection sites
- Manual birthing maneuver - instructor/student-controlled fetal descent
- Membrane rupture
- Oral and nasal care - lavage, gavage, suctioning
- Patient positioning and transfer techniques
- Placenta previa
- Postpartum care
- Postpartum hemorrhage
- Scalp electrode placement
- Shoulder dystocia maneuvers
- Umbilical cord clamping and cutting
- Umbilical cord prolapse





Lucy Maternal and Neonatal Birthing Simulator - Basic

Model No. LF00042 Sh. wt. 72 lbs.

Product Features

General

- Lightweight, full-body female - 66 in. (167 cm) long, 35-lb. (16 kg) weight
- Simple to transport in pre-hospital scenario training
- Superior range of motion with fully articulated joints
- Bony landmarks including ischial spines
- Change appearance quickly with multiple hair and eye colour combinations
- 5-year warranty

Includes

- Abdominal pad
- Abdominal skin - 1 normal and 1 cesarean
- Amniotic sac, 50
- Articulating baby
- Cervices - stages 1-6
- Chest skin
- CPR chest
- Eyes - brown/blue/green
- Fundus
- Hospital gown
- Inflation tubing with squeeze bulb
- Lubricating jelly
- Lung bag
- Pelvic block
- Perineal skin, 3 - prenatal, birthing, and episiotomy
- Perineal skin stabilizer pad
- Placenta
- Positioning bag
- Umbilical clamp
- 4 umbilical cords - 1 long, 3 short
- 3 wigs -black/blonde/brown

Consumables & replacement parts	Model No.
Articulating Baby Sh. wt. 4.50 lbs.	LF00050U
Replacement Cord Kit for Articulating Baby Sh. wt. 0.38 lbs.	LF00051U
Abdominal Pad Sh. wt. 2.25 lbs.	LF00060U
Abdominal Skin (Cesarean) Sh. wt. 3 lbs.	LF00059U
Abdominal Skin (Normal) Sh. wt. 2 lbs.	LF00058U
Cervices (Stages 1-6) Sh. wt. 2.25 lbs.	LF00067U
Fundus Sh. wt. 1.25 lbs.	LF00061U
Lung Bag Sh. wt. 0.25 lbs.	LF00070U
Meconium Methyl Cellulose Sh. wt. 2.25 lbs.	101-171U
Perineal Skin Foam Stabilizer Pad Sh. wt. 0.25 lbs	LF00065U

Consumables & replacement parts	Model No.
Perineal Skin (Birthing) Sh. wt. 1.50 lbs.	LF00064U
Perineal Skin (Episiotomy) Sh. wt. 1.50 lbs	LF00063U
Perineal Skin (Pre-Natal) Sh. wt. 1.50 lbs.	LF00062U
Placenta Sh. wt. 1.25 lbs.	LF00073U
Simulated Amniotic Sacs Roll of 50. Sh. wt. 1.75 lbs.	LF00077U
TrueClot [®] Blood Simulant Half-gallon. Sh. wt. 7 lbs.	SB51046U
TrueClot [®] Clotting Solution 500 ml. Sh. wt. 1.50 lbs.	SB51010U
Umbilical Clamp Sh. wt. 0.06 lbs.	LF00076U
Long Umbilical Cord Sh. wt. 0.63 lbs	LF00074U
Short Umbilical Cord Pkg. of 3. Sh. wt. 0.63 lbs.	LF00075U



SEM TRAINERS & SYSTEMS

8849563724 | 9879103905

Shop No.7, Saibaba Apartment, Opp. Main Post Office,
Halar Road, Valsad-396001, Gujarat.



NOELLE® Maternal Birthing Simulators

Model No. SB48760 L Sh. wt. 98 lbs.



- Designed to provide a complete birthing experience before, during, and after delivery
- Features articulating full-body female manikin, intubatable airway with chest rise, IV arm for meds/fluids, removable stomach cover, multiple fetal heart sounds, automatic birthing system, multiple placenta locations, replaceable dilating cervixes, and 1 articulating birthing baby with placenta
- Allows practice of Leopold's maneuvers, measuring head descent and cervical dilation, and postpartum suturing
- Monitor and log ventilations and chest compressions with OMNI® Code Blue® pack
- View feedback on your OMNI® device or any Windows® computer
- Includes 2 umbilical cords, 2 dilating cervixes, 2 umbilical clamps, 2 vulval inserts, 3 vulvae for postpartum suturing, postpartum hemorrhage and palpation module, training guide, teaching guide with scenarios, OMNI® Code Blue® pack (CPR Link software, CPR Link connection cable, CPR module pre-installed in simulator, international power supply [100-240V AC]), OMNI® controller talcum powder, water-soluble silicone lubricant, and carry bag
- 1-year warranty

NOELLE® Maternal and Neonatal Birthing Simulator

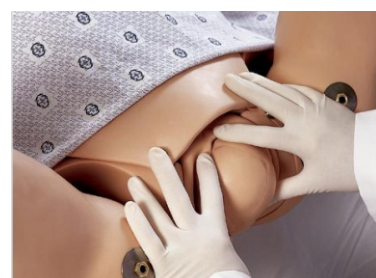
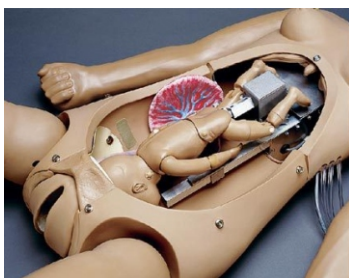
- Allows practice of C-section and forceps deliveries
- Also includes 1 resuscitation baby with intubatable airway and umbilical catheter site
- 1-year warranty
- Sh. wt. 106 lbs.

Model No. SB32878(L)U Light

NOELLE® Maternal and Neonatal Birthing Simulator with PEDI® Blue Neonate

- PEDI® Blue Neonatal Simulator with SmartSkin™ has the unique ability to change color based upon an initial pre-selected condition and the effectiveness of airway ventilation and chest compression provided
- Includes 1 Maternal controller
- 1-year limited warranty
- Sh. wt. 110 lbs.

Model No. SB37713(L)U Light





Advanced OB Susie® Birthing Torso - Light

Model No. SB50848 L Sh. wt. 40 lbs.



- Allows you to simulate every stage of the birthing process
- Simulate audible maternal and fetal heart sounds from 0-200 BPM, as well as audible newborn cries, grunting, and stridor
- Palpation of the fetus is ideal for practicing Leopold maneuvers
- Practice vaginal breech deliveries and free the legs using the Pinard maneuver
- Also allows for deliveries requiring vacuum augmentation or forceps
- Includes torso, birthing baby, and newborn baby
- Bladder catheterization with variable urinary flow - use conventional urinary bladder to reduce bladder size
- Clamp placement and umbilical cutting
- Delivery of placenta - position placenta to simulate placenta previa
- Insertion of medication through rectum
- Simulate postpartum bleeding
- Uterine massage
- Vertex or breech deliveries

Birthing torso includes:

- Blood collection stand with squeeze bulb to regulate pressure
- Directions for use
- Distensible cervixes (3)
- Midwifery gown with snaps
- Nonsterile urinary catheter (not for human use)
- Non-latex gloves (2 pairs)
- Placentas with removable fragments (2)
- Postpartum hemorrhage fluid silicone lubricant (1.25 liters)
- Requires 4 "AA" batteries (not included)
- Simulated blood concentrate
- Simulated urine concentrate
- Stethoscopes - 1 conventional and 1 Pinard
- Storage bag
- Suction bulb
- Talcum powder
- Vulval inserts (4)

Newborn baby features:

- Head cap to minimize hypothermia
- Squeeze bulb for operating umbilical pulse
- Umbilical catheterization



SEM TRAINERS & SYSTEMS

8849563724 | 9879103905

Shop No.7, Saibaba Apartment, Opp. Main Post Office,
Halar Road, Valsad-396001, Gujarat.



PRESTAN PROFESSIONAL ADULT SERIES 2000 MANIKIN

Model No. : PP-AM-2000-MS



The same high-quality, realistic Professional Adult Manikin is now available with Advanced Feedback including Rate, Depth, Recoil, Ventilation and Hands-Off Time via a Bluetooth® enabled PRESTAN CPR Feedback app available on both Apple and Android devices.

The same high-quality, realistic Professional Adult Manikin is now available with Advanced Feedback including Rate, Depth, Recoil, Ventilation and Hands-Off Time via a Bluetooth® enabled PRESTAN CPR Feedback app available on both Apple and Android devices.

Fully compliant with current industry guidelines, including the Heart and Stroke Foundation of Canada's February 2021 *Use of Feedback Devices in Resuscitation Training Courses Policy* and the most recent AHA Integrated Feedback Directive. Available in medium or dark skin tones, with CPR Feedback only and in Single or 4- Pack configurations.

The Prestan Professional Training Manikin series is unlike any other on the market. Uniquely designed for realistic experiences, they are available individually or in sets of four for group training. The manikins are designed to match the real-life CPR experience. In CPR training, a precise feedback indicator is vital. The Prestan's revolutionary CPR Rate Monitor provides instant feedback to both instructor and student on the correct compression depth. It enables each student to individually gauge their compression rate as well as allowing the instructor to monitor several students simultaneously. It is equipped with a unique Clicker Mechanism that gives an alert sound when the correct compression depth is reached. This helps ensure the students are using the correct force when administering CPR compression.

ADDITIONAL DETAILS:

The PRESTAN CPR Feedback App

Providing high-quality, real-time, advanced CPR feedback via a Bluetooth® connection with the PRESTAN Professional Adult Series 2000 Manikin. Advanced CPR feedback (includes rate, depth, recoil, ventilation, and hands-off time) is monitored, easily displayed, and available for reporting allowing students to self-monitor performance and gain confidence during CPR training.

The app allows instructors to provide comprehensive CPR training while monitoring CPR performance for up to six (6) students at a time. This app is also equipped with a reporting feature that allows for CPR training results to be downloaded directly from the app.



Sani-Child TORSO VTA

Model No. 100-2163



Economical child CPR manikin featuring single-use airway/lung/face shield system; anatomical landmarks include sternum and rib cage plus substernal notch

Rate light comes on when the correct rate is achieved

Second light comes on to show correct depth with proper release

Both lights on indicate the delivery of quality CPR



SANI BABY VTA CPR MANIKIN

Model No. 100-2164



The antiseptic baby! Sani-Baby is an economical, baby-size manikin that has a disposable, sanitary, single-user lung/airway and face shield system. This means that every student starts fresh and clean, every time. No cleaning - no disinfecting - no disassembly. Sani-Baby features a realistic face, molded hair, defined rib cage, and xiphoid process. Includes three disposable face shield/lung systems. Includes electronic VTA light box - Rate light comes on when the correct rate is achieved. Second light comes on to show correct depth with proper release. Both lights on indicate the delivery of quality CPR. 3-year warranty. Size: 26 in. x 8 in. x 8 in.

Adult Choking Manikin

Model No. 100-1602U Sh. wt. 16 lbs.



The Adult Choking Manikin With Carry Bag functions on the principle of clearing a blocked airway with forced air generated with the proper procedure, abdominal thrusts or back blows.

Once the object is lodged in the airway, the student must use the anatomical landmarks to decide where to place their hands and to decide how much pressure is required to accomplish the maneuver. With the appropriate force applied, the students are rewarded with the visual confirmation of an expelled object.

Manikins include rib cage, xiphoid process, suprasternal notch to provide anatomical reference, foreign body for airway obstruction, shirt, and soft carry bag.

Size: 30" x 17" x 10".

Infant Choking Manikin

Model No. 100-1602U

Sh. wt. 8 lbs.



The Infant Choking Manikin With Carry Bag functions on the principle of clearing a blocked airway with forced air generated with the proper procedure, abdominal thrusts or back blows.

Once the object is lodged in the airway, the student must use the anatomical landmarks to decide where to place their hands and to decide how much pressure is required to accomplish the maneuver. With the appropriate force applied, the students are rewarded with the visual confirmation of an expelled object.

Manikins include rib cage, xiphoid process, suprasternal notch to provide anatomical reference, foreign body for airway obstruction, shirt, and soft carry bag.

Size: 26 in. x 8 in. x 8 in.



Blood Pressure Simulator

Model No. LF01095 Sh. wt. 10 lbs.



The Life/form® Blood Pressure Simulator teaches physical assessment and helps resolve the uncertainties common in teaching students to take blood pressure.

This lifelike simulator allows the presetting of values for both systolic and diastolic pressures. Provides an excellent means to practice listening to and distinguishing blood pressure sounds prior to actual clinical experience. It is possible to audibly discern the five Korotkoff phases.

With this realistic unit, the student can find the preset results and the instructor can unfailingly know if the student has performed the procedure accurately. The electronically generated sounds are digitally recorded.

Includes the Life/form® Blood Pressure Arm with embedded speaker, sphygmomanometer, electronic control unit (six "AA" batteries), instruction manual, and soft carry case. No special stethoscope required (stethoscope not included). For auscultatory blood pressure only.

Features:

- Optional external speaker
- Redesigned and durable control unit
- Palpable radial pulse
- Simple calibration procedure

Control Unit Allows Instructor to:

- Adjust pulse rate
- Select systolic and diastolic settings
- Adjust volume
- Turn auscultatory gap on or off
- Easily calibrate unit for use with any sphygmomanometer

Students:

- Auscultate Korotkoff sounds with any stethoscope through a speaker in the arm
- Check palpable pulse at the radial site
- Pressures are activated at release valve
- Pump cuff
- Read pressures on sphygmomanometer
- Use normal procedure to place cuff on arm

Dimension: 23 in. L x 4 in. W x 4 in.

Five-year warranty.

Be extra careful of Foreign Companies dumping 2nd hand used Manikins in India

- 1: Can be contaminated with bacterial infectious loads
- 2: Leeching of Toxic, flammable additives accelerated in age hardened rubbers plastics
- 3: Manikins are never fumigated sterilized at point of import into India
- 4: Manikins are made from various Plastics Rubbers. Subject to brittle age hardening
- 5: Life of Manikins is very residual due to brittle age hardening. (1-2 years)
- 6: No Spares and parts will ever be available
- 7: Skills on Manikins may not reflect BEST CURRENT MEDICAL PRACTICES
- 9: Companies DO NOT DECLARE items to be 2nd Hand. Practice downright DISHONESTY
- 8: You become a VICTIM of STRUCTURED OBSOLESCENCE for Commercial gain only 11: Dishonesty destroys all SANCTITY in the chain of Learning-Training
- 10: When Commercial Interests are paramount, DISHONESTY becomes the Foundation
- 12: Any Learning-Training is a NOBLE venture particularly MEDICAL EDUCATION
- 13: In plain terms you are cheated. "Taken for a ride"

**Do not get carried away by Cheap low Prices, Huge Discounts,
Examine issues of Quality, Overall Life Utility Cycle of Manikin,
Durability, Accuracy and Simplicity of Use**

DO NOT GET CHEATED: GET CORRECT GUIDANCE

**From:
SEM TRAINERS & SYSTEMS**



SEM TRAINERS & SYSTEMS

☎ 8849563724 | 9879103905

Shop No.7, Saibaba Apartment, Opp. Main Post Office,
Halar Road, Valsad-396001, Gujarat.



RISKS FACTORS WHEN USING CHEAP MANIKINS

Solvents using VOCs include a variety of chemicals that may include Toluene, Xylene, Formaldehyde, Methylene Chloride, Ethyl Acetate hundreds of times cheaper are, Toxic, Carcinogenic, Mutagenic, Teratogenic Materials and are highly inflammable.

Heavy Metal Pigments Antimony Cadmium Lead etc. hundreds of times cheaper but downright Neurotoxic used for surface finishes, texturizing and as Fillers on Models and Manikins

Power Sources, Batteries employed in manikins can rapidly overheat and explode

Inadequate Inefficient manufacturing processes result in release of white powders in bones, chipping off edges fine processes, disintegration of fiberglass based models, bad surface finish, rough textures, low image, finish poor distorted images of models

HEALTH AND MEDICAL SAFETY SERIOUSLY COMPROMISED

- Handling such models Can cause
 - Reduction in IQ (Intelligence Quotient)
- Shorten Concentration Attention Spans Cause ADHD
 - Cause Neurological Problems
 - Affect Hemoglobin Levels in Blood
 - Hemotoxicity Anemia
 - Increase Hyperactivity
- Cause Learning Perception Disabilities

LEARNING-TEACHING AND EXAMINATION EVALUATION RISKS YOU WILL LEARN WRONG CONCEPTS IN ANATOMY

**You cannot use such Models Manikins to conduct medical examinations
Once you learn wrong concepts, it is difficult to unlearn and re-learn again**

**THEREFORE YOU SHOULD ALWAYS
BUY PRODUCTS OF REPUTED & RENOWNED MANUFACTURERS
BUY FROM
SEM TRAINERS & SYSTEMS**



SEM TRAINERS & SYSTEMS

☎ 8849563724 | 9879103905

Shop No.7, Saibaba Apartment, Opp. Main Post Office,
Halar Road, Valsad-396001, Gujarat.



EXERCISE EXTREME CAUTION, CARE WHEN ATTEMPTING TO PURCHASE "REAL BONES"

1: In India, it is a Criminal offence for students and individuals buy or sell Human Skeletal remains for whatever reasons. Medical Students in the past have been arrested and convicted for purchasing human skeletal remains from grave diggers and black market traders

2: Creating a demand for Human Skeletal remains encourages Grave Digging and Theft, snatching half burnt corpses from Crematoria, Murder of homeless persons specially children and persons from economically weak sections of society all these constituting grave criminal offences and also violating the religious and cultural sanctity of different faiths and are chargeable under several sections of the IPC

3: Current practices of obtaining skeletal remains from villages in India from decomposed bodies do not adequately address risks arising out of diseases like Hepatitis C. AIDS, Tuberculosis and diseases from other bacterial and pathogenic routes, Such work is highly unregulated, outside the bounds of law, unhygienic, and surreptitious

4: Trade in Real Bones is banned in India. Real bones can only be reclaimed by Medical Colleges for in house training in Education from unclaimed bodies meant to be disposed off under Court Directed Orders and procurement from Authorized Licensed Dealers specifically authorized for this purposes

5: Real Bones are 100 times costlier than artificial bones and hence encourages theft, kidnaping, murder, skullduggery fraud and committing multiple crimes.

Move with the times adopt "Change" in Learning and Teaching Methodologies TUNE IN TO MODERN DEVELOPMENTS, USE ARTIFICIAL BONES

- 6: 3D Printing technology prints patient-useable skins parts for burns and surgery, Bones follow
- 7: 3D Printers produce high resolution, high quality bones unheard of during 1980s and 1990s.
- 8: Computerized Data facilitates providing wide variations in Osteological specimens
- 9: Smart Molding processes capture over 99% surface details of any real specimen
- 10: High resolution CT Scans render incredibly detailed images and physical reconstruction individual bone.
- 11: Artificial Bones extensively used over 90% for practice for expertise in Orthopedic Surgeries
- 12: Artificial Bones are cast form Original Human Bones
- 13: Each Artificial Bone is a unique original cast of natural bone with realistic weight feel and appearance
- 14: Each Bone represents the finest anatomical structure with realistic texture color and porous characteristics of real human bones
- 15: Ortho Bones used extensively to develop Basic Skills in Surgical Methods and correct handling of Implants, for Endoprosthesis
- 16: Orthobones help optimize skills in your quest for specialization in fractures to Arms Legs, Maxofacial Surgery, or Pelvic Implants

SELECT YOUR BONES FROM THE VAST CORNUCOPIA OF BONES FROM: SEM TRAINERS & SYSTEMS



SEM TRAINERS & SYSTEMS

☎ 8849563724 | 9879103905

Shop No.7, Saibaba Apartment, Opp. Main Post Office,
Halar Road, Valsad-396001, Gujarat.



Planning a Clinical Skills Lab? Follow these Guidelines.

Start a Skills Lab only with Simple Task Trainers "One step at a Time" and never with a High End SMART Manikin Basic Skills Trainers are the Foundations for any Clinical Skills Training

- 1: Very low investment costs and negligible support systems required
- 2: Easy to maintain. No hidden costs. Low Maintenance & Operating Costs
- 3: Future infrastructural outlays for CSL evolve with experiential exposures
- 4: Can be positioned in "In-Situ" and "On Demand Ready to use" State and Portable
- 5: Efficiencies of training in skills very high and available on demand for repeated trainings
- 6: Various shortcomings in your lab can be addressed with experiential exposures
- 7: Culture of interacting with Manikins can effectively develop Medical, Social, and Managerial Emotional Skills for effective diagnosis and treatment capabilities.
- 8: Inadvertent Damage very low. No worry at all about Obsolescence
- 9: Even Single trainee can train on each simulator. Groups not necessary as in Smart manikins
- 10: Cost effective review of mistakes and errors Possible. Fresher can immediately handle Basic Manikins
- 11: Do not require Electrical/Battery Power. Consequential damage, hazards not possible
- 12: Annual Budgeting constraints make it easier to fit in and procure basic Manikins of your choice
- 13: Once Basic Skills are mastered on Procedural Task Trainers. Student groups can learn to create "Scenarios" for higher level learning and move on to Multiskills high-end Manikins

For Best Advice Guidance Assistance on consolidated Plans for
Selection of Models-Charts-Manikins-Simulators,
for CLINICAL SKILLS LABORATORIES

**CONTACT:
SEM TRAINERS & SYSTEMS**



SEM TRAINERS & SYSTEMS

📞 8849563724 | 9879103905

Shop No.7, Saibaba Apartment, Opp. Main Post Office,
Halar Road, Valsad-396001, Gujarat.

PLANNING A SMART MANIKIN?

A: Definitely, never at the first stage

Require MINIMUM AWARENESS-SKILLS before handling Smart Manikins Smart Interactive features NOT suitable for BASIC "hands on" Training Individual Tasks can never be effectively trained on such Manikins Delivery of Training Efficiency (Hands on Training) can be very low (5-8%) Features are suitable for Diagnostic - Evaluation - Treatment Training Protocols Suitable for Teamwork Dynamic Training in Diagnostics - Evaluation - Treatments

B: Points to Remember When you buy a Smart Manikin

- Never buy a Smart Manikin as a Status Symbol
- Ensure you have correct appropriate infrastructure (dedicated room, high end power supply, dedicated computation server, efficient lighting and ventilation fire extinguishers facilities and alarm systems)
- A Smart Manikin is not just a "Multiple Discrete Task Trainer" A Smart Manikin provides a Multiplier Effect resulting in an exponential increase in "Diagnostics and Clinical Skills" for trainees
- You require a dedicated full time Expert in Simulation Methodologies for efficient utility of the Simulator
- Very High Initial Investments anything from Rs 70 Lakhs to Rs. 500 Lakhs
- High Hidden recurring expenses to keep system functioning Rs. 4 Lakhs Annual
- Utility can be very low in absence of established culture of using Manikins Costs of accidental Collateral damage to Smart Manikins can be prohibitive A Smart Manikin can quickly become a WHITE ELEPHANT- A DEAD INVESTMENT Because of very limited usage, high idle time costs, low training deliveries
- As a "Dead Investment" COUNTER PRODUCTIVE to Learning and Teaching
- As a " Dead Investment" can generate a NEGATIVE Image for Learning- Training on Manikins and Simulators

**For Expertise Guidance
contact
SEM TRAINERS & SYSTEMS**



SEM TRAINERS & SYSTEMS

☎ 8849563724 | 9879103905

Shop No.7, Saibaba Apartment, Opp. Main Post Office,
Halar Road, Valsad-396001, Gujarat.

Remember

When you buy from SEM TRAINERS & SYSTEMS

You Do Not Buy Just "A Product"

YOU BUY

Guaranteed New	Manikins Simulators from Reputed USA/Europe/Japanese Brands
Best Cost	Manikins Simulators at the lowest Prices
Latest	Knowledge-Technology Resources in Medical Simulation
Expertise	in Simulation Based Medical Education Methodologies
Expertise	in Scenario Based Training Methodologies
Expertise	in Design Guidelines Clinical Skills Laboratories
Expertise	in Post Sales Workshops-Installation-Demos-Training-
Repairs	

The ONE and ONLY Company in India giving you ALL Manufacturers Simulators under One roof

We Guarantee you	No Fake Labeling (Using Cheap manikins)
We Guarantee you	No second hand refurbished manikins supplied as "NEW"
We Guarantee you	We do not entice you with large discounts (60%) and then Sell refurbished second hand repaired Reputed Brands
We Guarantee you	Original Manikins -Labels-Cartons-Manuals of Original Manufacturers

**With more than 400 man-years experience in Education Methodologies
The ONE Company marketing ONLY Medical Skills Training Simulators
in India**

Visit us on : www.semtrainers.com



SEM TRAINERS & SYSTEMS

8849563724 | 9879103905

Shop No.7, Saibaba Apartment, Opp. Main Post Office,
Halar Road, Valsad-396001, Gujarat.

LAB SETUP





SEM

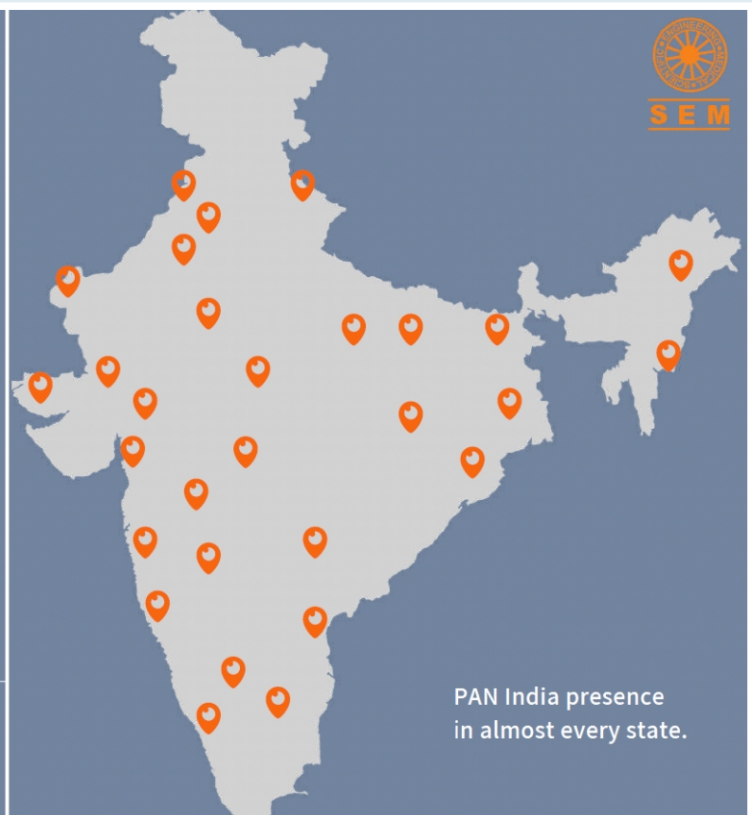
SEM TRAINERS & SYSTEMS

WHERE TIME MOVES AHEAD TO KEEP PACE WITH KNOWLEDGE

SEM - Scientific Educative Methods in Science, Engineering & Medicine


Our Presence and Supplies In India


WHERE TIME MOVES AHEAD TO KEEP PACE WITH
KNOWLEDGE




PAN India presence
in almost every state.


Thank You

 Shop No. 7, Saibaba Apartment,
Opposite Main Post Office, Halar Road,
Valsad-396001, Gujarat.


 www.semtrainers.com


 semtrainersvalsad@gmail.com,
sem@semtrainers.com

 **88495 63724 / 98791 03905**

 **02632-356286**

 **Pune : 85302 03623 / 88050 27511**

 **Mumbai : 98220 02296**

 **Gujarat : 97256 80788 / 78629 28520**

FOLLOW US ON:     