



SEM

SEM TRAINERS & SYSTEMS

WHERE TIME MOVES AHEAD TO KEEP PACE WITH KNOWLEDGE

SEM- Scientific Educative Methods in Science, Engineering & Medicine

Mobile : +91 88495 63724
Mobile 1: +91 98791 03905

Email: sem@semtrainers.com
Website: www.semtrainers.com



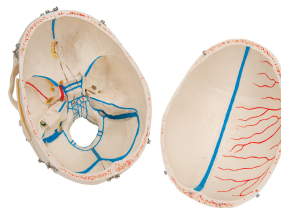
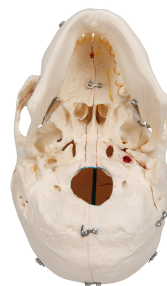
Deluxe Human Demonstration Dental Skull Model, 10 part - 3B Smart Anatomy

Item No. 1000059 [A27]
Weight 1.1 kg
Dimensions 28 x 22.5 x 18.5 cm
Brand 3B Scientific

[Read More](#)

SKU:

Categories: Human Skull Models



Product Description

New **anatomy app** called 3B Smart Anatomy now included for FREE with Deluxe Human Demonstration Dental Skull Model, 10 part.

Every original 3B Scientific anatomy model now includes these additional **FREE features**:

- Free access to the **anatomy course** 3B Smart Anatomy, hosted inside the award-winning Complete Anatomy app by 3D4Medical
- The 3B Smart Anatomy course includes **23 digital anatomy lectures**, 117 different virtual anatomy models and 39 anatomy quizzes to test your knowledge
- Bonus: **FREE warranty upgrade from 3 to 5 years** with every product registration

TIP: You will also receive access to a **free 3-day trial to all premium features** of the Complete Anatomy app when you sign up for your 3B Smart Anatomy course.

To unlock these benefits, simply scan the label located on your model and register online. All 3B Smart Anatomy features are **completely free of charge** for you. [Click here](#) to learn more.

This replica of the human skull is one of exceptional quality and anatomical detail. The skullcap is removable and the base of skull is mid-sagittally divided. The skull model features a frontal sinus, perpendicular lamina and vomer that are fitted with flaps which can be opened to view the lateral nose wall and sphenoidal sinus. On the left half, the temporal bone can be removed and folded up in the area of the tympanic membrane. Maxilla and mandible of the skull are opened to reveal the alveolar nerves. On the right side the temporal bone is opened to reveal the sigmoid sinus, the facial nerve canal and the semicircular ducts. Additional flaps on the skull are located at the maxillary sinus and the right half of the mandible, so that the dental roots of the premolars and molars of the lower jaw can also be viewed. The natural occlusion and the individual removal and replacement of each tooth also make this skull especially interesting for dentists. This is a spectacular model whether you use it as a dental skull or for other purposes. The anatomy of the human skull is easy to learn and teach using this model. 3B Smart Anatomy explained in 90 seconds: