



SEM

SEM TRAINERS & SYSTEMS

WHERE TIME MOVES AHEAD TO KEEP PACE WITH KNOWLEDGE

SEM- Scientific Educative Methods in Science, Engineering & Medicine

Mobile : +91 88495 63724
Mobile 1: +91 98791 03905

Email: sem@semtrainers.com
Website: www.semtrainers.com

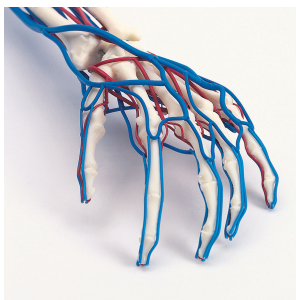
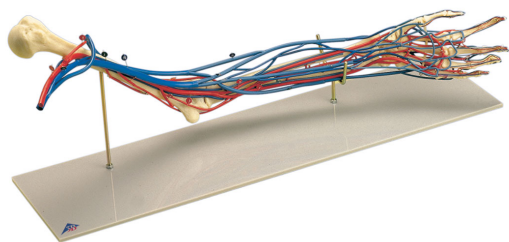
Vascular Arm

Item No. 1005109 [W19019]
Weight 1.088 kg
Dimensions 66 x 18 x 28 cm
MPN: 1005109

[Read More](#)

SKU:

Categories: Arm and Hand Skeleton Models



Product Description

Life size model of the left arm and hand in a semi-flexed position with the brachial, radial and ulnar arteries and accompanying veins with their radicals in situ. The complete blood circulatory system of the hand is shown on both palmar and dorsal surfaces. Comparative sizes of the various blood vessels are clearly indicated and facilitate the study of the blood circulation in the arm. Mounted on stand.