



**SEM**

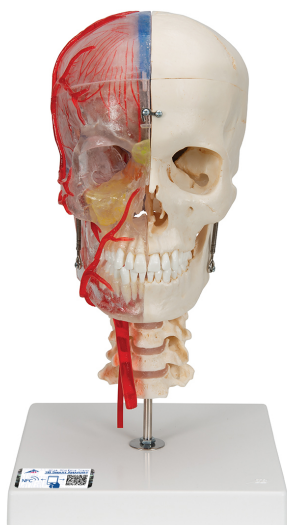
## SEM TRAINERS & SYSTEMS

WHERE TIME MOVES AHEAD TO KEEP PACE WITH KNOWLEDGE

SEM- Scientific Educative Methods in Science, Engineering & Medicine

**Mobile :** +91 88495 63724  
**Mobile 1:** +91 98791 03905

**Email:** sem@semtrainers.com  
**Website:** www.semtrainers.com



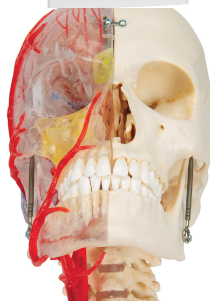
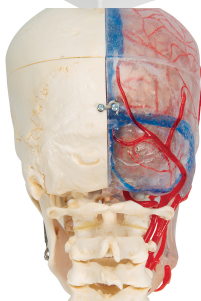
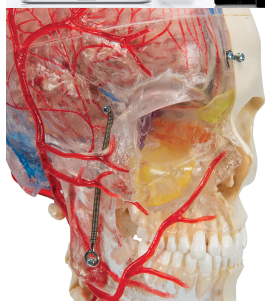
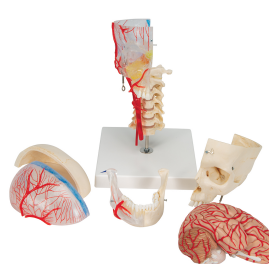
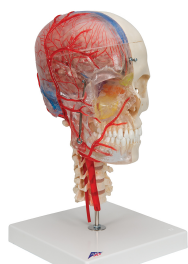
## BONE

Item No. 1000064 [A283]  
Weight 1.68 kg  
Dimensions 18 x 18 x 34 cm  
Brand 3B Scientific

[Read More](#)

**SKU:**

**Categories:**Vertebra Models



## Product Description

New **anatomy app** called 3B Smart Anatomy now included for FREE with BONElike™ Human Skull Model, Half Transparent & Half Bony, Complete with Brain & Vertebrae.

Every original 3B Scientific anatomy model now includes these additional **FREE features**:

- Free access to the **anatomy course** 3B Smart Anatomy, hosted inside the award-winning Complete Anatomy app by 3D4Medical
- The 3B Smart Anatomy course includes **23 digital anatomy lectures**, 117 different virtual anatomy models and 39 anatomy quizzes to test your knowledge
- Bonus: **FREE warranty upgrade from 3 to 5 years** with every product registration

**TIP:** You will also receive access to a **free 3-day trial to all premium features** of the Complete Anatomy app when you sign up for your 3B Smart Anatomy course.

To unlock these benefits, simply scan the label located on your model and register online. All 3B Smart Anatomy features are **completely free of charge** for you. [Click here](#) to learn more.

The BONElike™ Didactic Skulls are made of a new material that allows an absolutely natural reproduction of even finest anatomical structures of the human skull for the first time. Bones made of 3B BONElike™ look real, have an absolutely natural feel and almost exactly the weight of a natural bone.

This worldwide unique and high quality didactic skull will leave no questions in the study of skull anatomy unanswered! The possibility to transfer the structures visible on the transparent half to the bony half give this skull a special didactic value. On the right, transparent skull half the paranasal sinuses can be easily located even from the outside, since these are marked in different colors: maxillary sinus (yellow), ethmoidal cells (orange), frontal sinus (green), sphenoidal sinus (purple).

The cranial sinuses and the neck and face arteries are also shown in color: sinuses of dura mater (blue), common carotid artery, external and internal carotid artery and the branches of the meningeal artery (red). One brain half, which is also visible through the skullcap, visualizes the brain position and the course of the sinuses. The periodontal pockets and tooth roots can be viewed through the transparent jaw of the skull. The lower jaw is mounted flexibly to demonstrate the masticator movements of the human skull. The didactic skull is mounted on a cervical spine and can be disassembled into both halves of the skullcap, the left half of the base of skull, the nasal septum, the

complete mandible and a brain half.  
3B Smart Anatomy explained in 90 seconds: