



**SEM**

## SEM TRAINERS & SYSTEMS

WHERE TIME MOVES AHEAD TO KEEP PACE WITH KNOWLEDGE

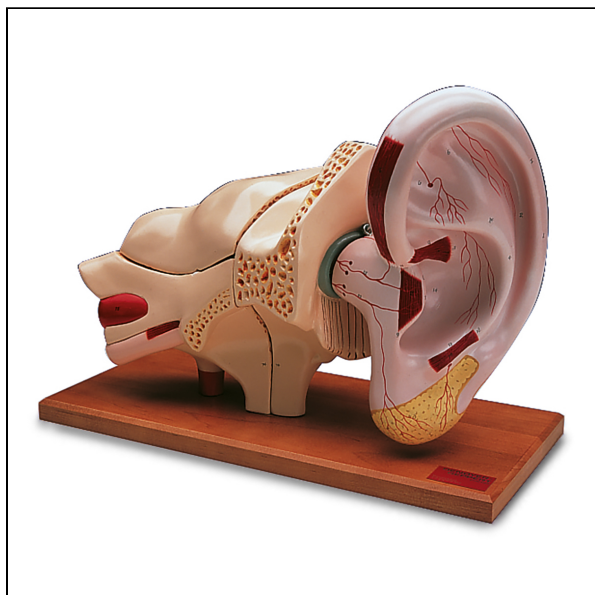
SEM- Scientific Educative Methods in Science, Engineering & Medicine

**Mobile :** +91 88495 63724

**Mobile 1:** +91 98791 03905

**Email:** sem@semtrainers.com

**Website:** www.semtrainers.com



## Ear Model, 5 times full-size, 8 part

Item No.	1005538 [W42514]
Weight	4.1 kg
Dimensions	43 x 25.5 x 20 cm
Brand	Denoyer-Geppert
MPN:	0123-00

[Read More](#)

**SKU:**

**Categories:** Ear Models

## Product Description

Representation of outer, middle and inner ear. Removable from ear are:

- Outer ear
- Petrosal bone
- Mastoid process
- Tympanic membrane and auditory ossicles
- Labyrinth
- Cochlea and vestibulocochlear nerve (3-part)

The transparent semicircular canals of the human ear are filled with fluid, each with one bubble to demonstrate their balance function. Ear on wooden base.