



SEM TRAINERS & SYSTEMS

WHERE TIME MOVES AHEAD TO KEEP PACE WITH KNOWLEDGE

SEM- Scientific Educative Methods in Science, Engineering & Medicine

Mobile : +91 88495 63724
Mobile 1: +91 98791 03905

Email: sem@semtrainers.com
Website: www.semtrainers.com

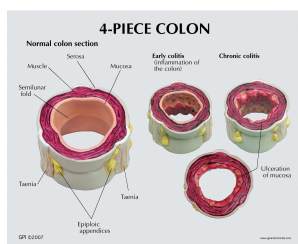
4 Piece Colon with Pathologies

Item No. 1019555
Weight 0.13 kg
MPN: 3341

[Read More](#)

SKU:

Categories: Digestive System Models



Product Description

Four-piece colon model with cross-section of the human colon demonstrating both normal and various disease conditions. Structures included in the normal anatomy include: serosa, muscle, mucosa, semilunar folds, taenia, and epiploil appendices. Diseases represented are: polyps, cancer, diverticulitis, and colitis.

- Model size: 3.6 x 1.5 x 7.8"