



SEM TRAINERS & SYSTEMS

WHERE TIME MOVES AHEAD TO KEEP PACE WITH KNOWLEDGE

SEM- Scientific Educative Methods in Science, Engineering & Medicine

Mobile : +91 88495 63724
Mobile 1: +91 98791 03905

Email: sem@semtrainers.com
Website: www.semtrainers.com

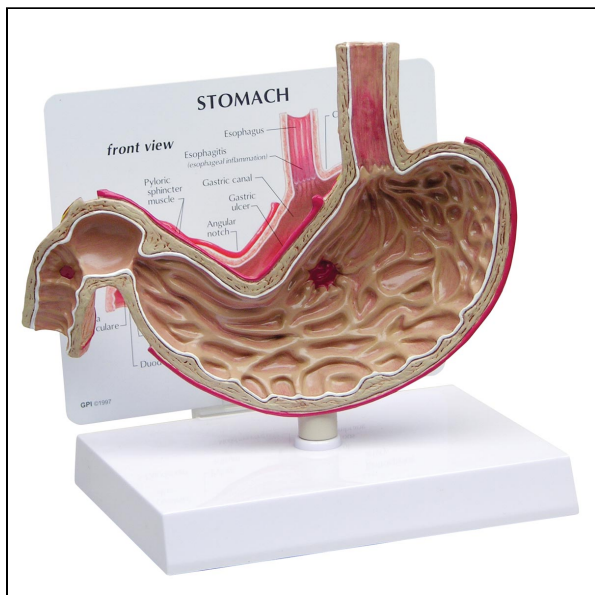
Stomach Model with Ulcers

Item No. 1019523
Weight 0.3 kg
MPN: 2000

[Read More](#)

SKU:

Categories: Digestive System Models



Product Description

The Stomach Model with Ulcers is a full size cut-away section of stomach shows gastric ulcer, duodenal ulcer and esophageal inflammation.

- Model size: 7.75 x 2.25 x 6.25"
- Base: 6.5 x 5"