



**SEM**

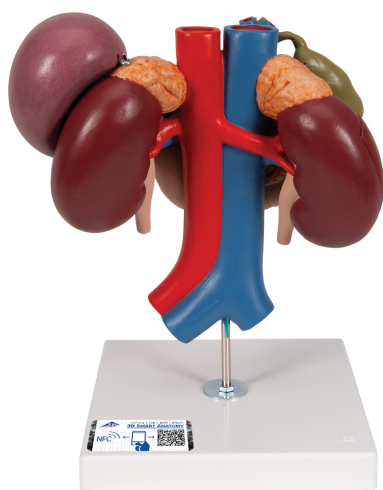
## SEM TRAINERS & SYSTEMS

WHERE TIME MOVES AHEAD TO KEEP PACE WITH KNOWLEDGE

SEM- Scientific Educative Methods in Science, Engineering & Medicine

**Mobile :** +91 88495 63724  
**Mobile 1:** +91 98791 03905

**Email:** sem@semtrainers.com  
**Website:** www.semtrainers.com



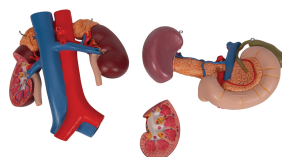
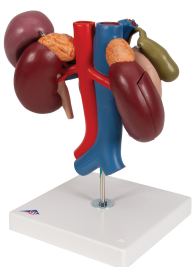
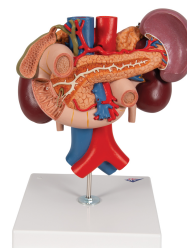
## Human Kidneys Model with Rear Organs of Upper Abdomen, 3 part - 3B Smart Anatomy

Item No. 1000310 [K22/3]  
Weight 0.906 kg  
Dimensions 24 x 18 x 29 cm  
Brand 3B Scientific

[Read More](#)

**SKU:**

**Categories:** Digestive System Models



## Product Description

New **anatomy app** called 3B Smart Anatomy now included for FREE with Human Kidneys Model with Rear Organs of Upper Abdomen, 3 part.

Every original 3B Scientific anatomy model now includes these additional **FREE features**:

- Free access to the **anatomy course** 3B Smart Anatomy, hosted inside the award-winning Complete Anatomy app by 3D4Medical
- The 3B Smart Anatomy course includes **23 digital anatomy lectures**, 117 different virtual anatomy models and 39 anatomy quizzes to test your knowledge
- Bonus: **FREE warranty upgrade from 3 to 5 years** with every product registration

**TIP:** You will also receive access to a **free 3-day trial to all premium features** of the Complete Anatomy app when you sign up for your 3B Smart Anatomy course.

To unlock these benefits, simply scan the label located on your model and register online. All 3B Smart Anatomy features are **completely free of charge** for you. [Click here](#) to learn more.

This high quality Kidney model with rear organs of the upper abdomen model combines kidney models K22/1 and K22/2 depicting the anatomy of the human urinary system and digestive system. The upper abdominal organs are attached in their natural anatomical positions and are removable from the

kidneys. The model features many anatomical details of the kidneys and rear organs.

Front half of Kidney is removable to reveal:

- Renal pelvis
- Renal calices
- Renal cortex
- Renal medulla

The upper abdomen shows:

- Duodenum (partially opened)
- Gall bladder (opened)
- Bile ducts (opened)
- Pancreas (revealing large ducts)
- Spleen and the surrounding vessels in natural size

Kidneys with rear organs of the upper abdomen model on stand.

3B Smart Anatomy explained in 90 seconds: