



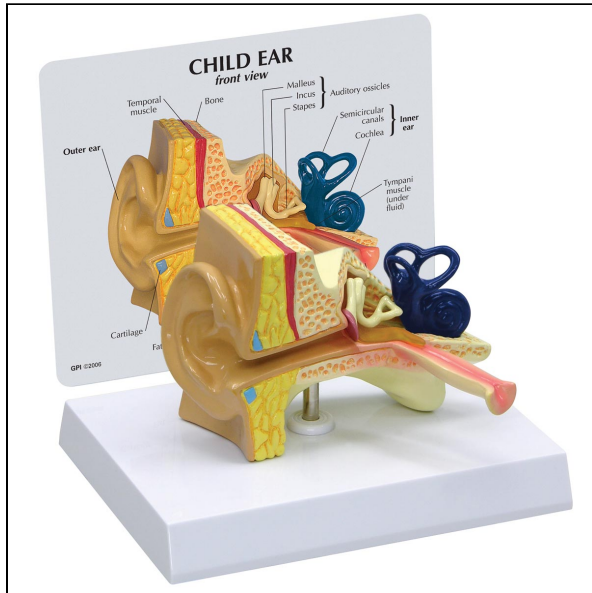
## SEM TRAINERS & SYSTEMS

WHERE TIME MOVES AHEAD TO KEEP PACE WITH KNOWLEDGE

SEM- Scientific Educative Methods in Science, Engineering & Medicine

**Mobile :** +91 88495 63724  
**Mobile 1:** +91 98791 03905

**Email:** sem@semtrainers.com  
**Website:** www.semtrainers.com



## Child's Ear Model

Item No. 1019528  
Weight 0.4 kg  
MPN: 2300

[Read More](#)

**SKU:**

**Categories:** Ear Models



## Product Description

This oversized child's ear model illustrates: semi-circular canals and cochlea of the inner ear; auditory ossicles, otitis media (inflammation and simulated fluid in the middle ear); tympanic membrane, temporal and tensor tympani muscles; the model also presents a horizontal eustachian tube typical of a child.

- Model size: 4.75 x 4 x 3.5"
- Base: 6.5 x 5"