



SEM

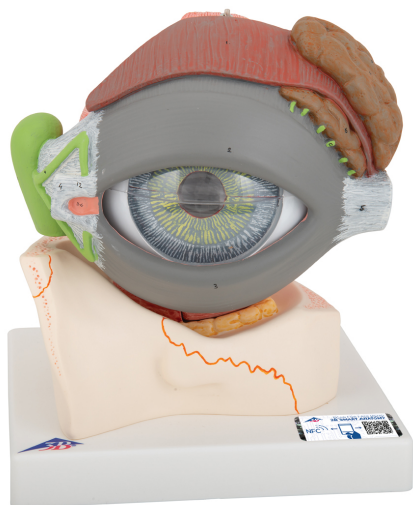
SEM TRAINERS & SYSTEMS

WHERE TIME MOVES AHEAD TO KEEP PACE WITH KNOWLEDGE

SEM- Scientific Educative Methods in Science, Engineering & Medicine

Mobile : +91 88495 63724
Mobile 1: +91 98791 03905

Email: sem@semtrainers.com
Website: www.semtrainers.com



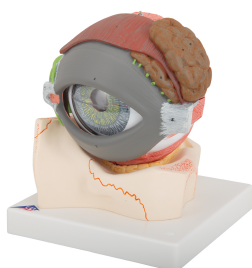
Human Eye Model, 5 times full-size, 8 part - 3B Smart Anatomy

Item No. 1000257 [F12]
Weight 1.174 kg
Dimensions 20 x 18 x 21 cm
Brand 3B Scientific

[Read More](#)

SKU:

Categories:Eye Models



Product Description

New **anatomy app** called 3B Smart Anatomy now included for FREE with Human Eye Model, 5 times full-size, 8 part.

Every original 3B Scientific anatomy model now includes these additional **FREE features**:

- Free access to the **anatomy course** 3B Smart Anatomy, hosted inside the award-winning Complete Anatomy app by 3D4Medical
- The 3B Smart Anatomy course includes **23 digital anatomy lectures**, 117 different virtual anatomy models and 39 anatomy quizzes to test your knowledge
- Bonus: **FREE warranty upgrade from 3 to 5 years** with every product registration

TIP: You will also receive access to a **free 3-day trial to all premium features** of the Complete Anatomy app when you sign up for your 3B Smart Anatomy course.

To unlock these benefits, simply scan the label located on your model and register online. All 3B Smart Anatomy features are **completely free of charge** for you. [Click here](#) to learn more.

Human Eye model, 5 times life size with 8 parts.

Removable parts of the anatomical human eye model include:

- Upper half of the sclera with cornea and eye muscle attachments
- Both halves of choroid with iris and retina
- Eye lens
- Vitreous humour
- Eyelid
- Lachrymal system
- Anatomical features around the eyeball

This anatomical model is great for studying the anatomy of the human eye! Eye on base of bony orbit.
3B Smart Anatomy explained in 90 seconds: