



SEM

SEM TRAINERS & SYSTEMS

WHERE TIME MOVES AHEAD TO KEEP PACE WITH KNOWLEDGE

SEM- Scientific Educative Methods in Science, Engineering & Medicine

Mobile : +91 88495 63724

Mobile 1: +91 98791 03905

Email: sem@semtrainers.com

Website: www.semtrainers.com

Brain Model

Item No. 1019542

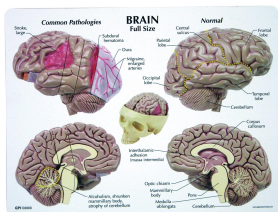
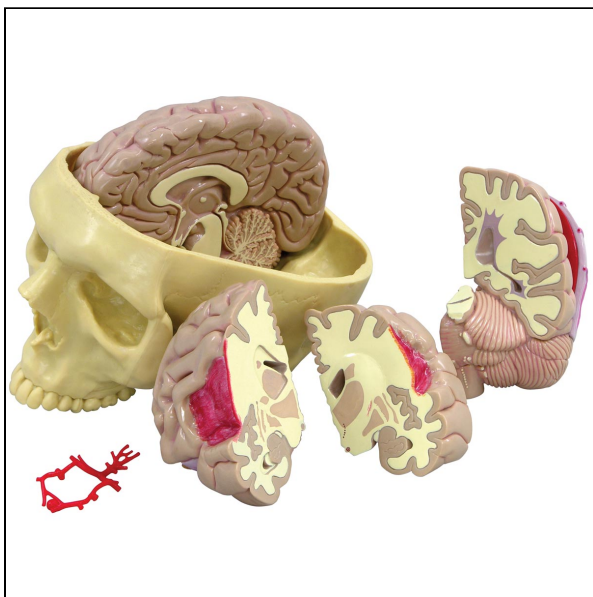
Weight 1 kg

MPN: 2900

[Read More](#)

SKU:

Categories: Human Skull Models



Product Description

Full size segmented brain model features half normal side and three-piece sectioned pathology half, as well as Circle of Willis with aneurism. The brain, which sits inside a partial skull, features the following pathologies which are also illustrated on a two-sided education card: alcoholism, Alzheimer's, aneurism, depression related tumor, seizure related tumor, migraine, multiple sclerosis, Parkinson's disease, stroke, and subdural hematoma.

- Model size: 5 x 6.75 x 5"