



**SEM**

## SEM TRAINERS & SYSTEMS

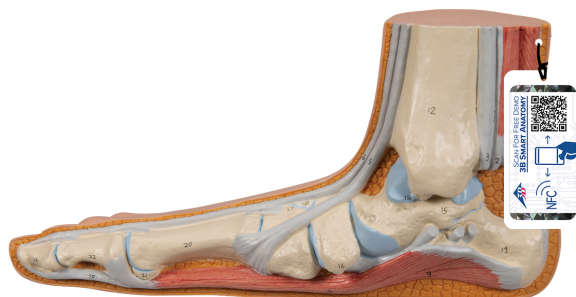
WHERE TIME MOVES AHEAD TO KEEP PACE WITH KNOWLEDGE

SEM- Scientific Educative Methods in Science, Engineering & Medicine

**Mobile :** +91 88495 63724  
**Mobile 1:** +91 98791 03905

**Email:** sem@semtrainers.com  
**Website:** www.semtrainers.com

## Flat Foot (Pes Planus) Model - 3B Smart Anatomy

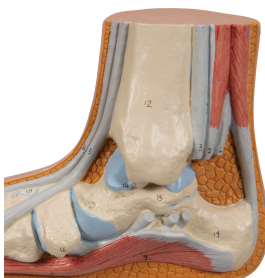
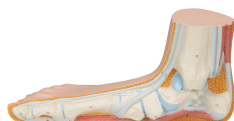


Item No. 1000355 [M31]  
Weight 0.48 kg  
Dimensions 12 x 24 x 10 cm  
Brand 3B Scientific

[Read More](#)

**SKU:**

**Categories:** Joint Models



## Product Description

New **anatomy app** called 3B Smart Anatomy now included for FREE with Flat Foot (Pes Planus) Model.

Every original 3B Scientific anatomy model now includes these additional **FREE features**:

- Free access to the **anatomy course** 3B Smart Anatomy, hosted inside the award-winning Complete Anatomy app by 3D4Medical
- The 3B Smart Anatomy course includes **23 digital anatomy lectures**, 117 different virtual anatomy models and 39 anatomy quizzes to test your knowledge
- Bonus: **FREE warranty upgrade from 3 to 5 years** with every product registration

**TIP:** You will also receive access to a **free 3-day trial to all premium features** of the Complete Anatomy app when you sign up for your 3B Smart Anatomy course.

To unlock these benefits, simply scan the label located on your model and register online. All 3B Smart Anatomy features are **completely free of charge** for you. [Click here](#) to learn more.

Superficial structures of a flat foot are shown. The internal bones, muscles, ligaments and nerves are also represented in this high quality flat foot model. A great depiction of the anatomy of a flat foot. 3B Smart Anatomy explained in 90 seconds: