



SEM

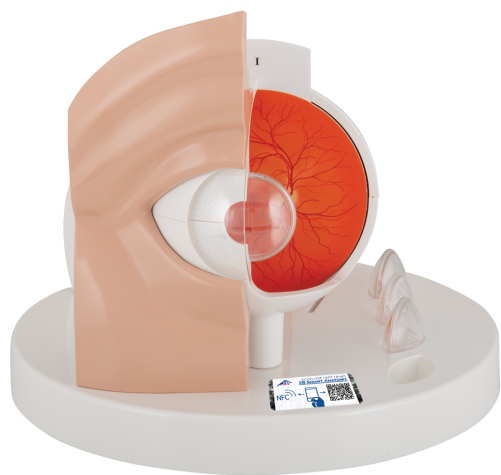
SEM TRAINERS & SYSTEMS

WHERE TIME MOVES AHEAD TO KEEP PACE WITH KNOWLEDGE

SEM- Scientific Educative Methods in Science, Engineering & Medicine

Mobile : +91 88495 63724
Mobile 1: +91 98791 03905

Email: sem@semtrainers.com
Website: www.semtrainers.com



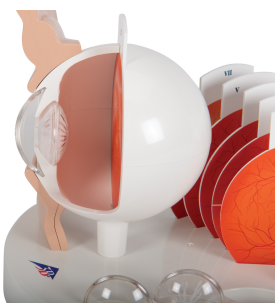
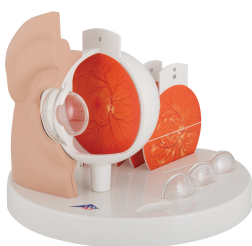
Pathological Human Eye Model - 3B Smart Anatomy

Item No. 1017230 [F17]
Weight 0.99 kg
Dimensions 26 x 26 x 21 cm
Brand 3B Scientific

[Read More](#)

SKU:

Categories: Eye Models



Product Description

New **anatomy app** called 3B Smart Anatomy now included for FREE with Pathological Human Eye Model.

Every original 3B Scientific anatomy model now includes these additional **FREE features**:

- Free access to the **anatomy course** 3B Smart Anatomy, hosted inside the award-winning Complete Anatomy app by 3D4Medical
- The 3B Smart Anatomy course includes **23 digital anatomy lectures**, 117 different virtual anatomy models and 39 anatomy quizzes to test your knowledge
- Bonus: **FREE warranty upgrade from 3 to 5 years** with every product registration

TIP: You will also receive access to a **free 3-day trial to all premium features** of the Complete Anatomy app when you sign up for your 3B Smart Anatomy course.

To unlock these benefits, simply scan the label located on your model and register online. All 3B Smart Anatomy features are **completely free of charge** for you. [Click here](#) to learn more.

This human eye model by 3B Scientific® shows an eye enlarged by a factor of 5. It is a perfect tool to assist the healthcare professional in educating patients in the anatomy and changes of the human eye.

The easy to use switchable and didactically simplified representations of the retina and lens make it possible to explain clearly to the patient the typical changes that occur in a healthy eye due to common diseases. There are various eye problems that can affect one's vision, and with this model you can

easily demonstrate the following diseases:

- Subcapsular cataract
- Cortical cataract
- Nuclear cataract
- Diabetic retinopathy
- Hypertensive retinopathy
- Papillary changes of glaucoma
- Age-related macular degeneration
- Papilloedema
- Central retinal arterial occlusion
- Central retinal venous occlusion
- Rhegmatogenous retinal detachment

3B Smart Anatomy explained in 90 seconds: