



**SEM**

## SEM TRAINERS & SYSTEMS

WHERE TIME MOVES AHEAD TO KEEP PACE WITH KNOWLEDGE

SEM- Scientific Educative Methods in Science, Engineering & Medicine

**Mobile :** +91 88495 63724  
**Mobile 1:** +91 98791 03905

**Email:** sem@semtrainers.com  
**Website:** www.semtrainers.com



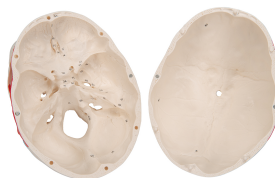
## Classic Human Skull Model painted, 3 part - 3B Smart Anatomy

Item No. 1020168 [A23]  
Weight 0.706 kg  
Dimensions 23.2 x 16.7 x 16.7 cm  
Brand 3B Scientific  
Previous Item No. 1000055

[Read More](#)

**SKU:**

**Categories:** Human Skull Models



## Product Description

New **anatomy app** called 3B Smart Anatomy now included for FREE with Classic Human Skull Model painted, 3 part.

Every original 3B Scientific anatomy model now includes these additional **FREE features**:

- Free access to the **anatomy course** 3B Smart Anatomy, hosted inside the award-winning Complete Anatomy app by 3D4Medical
- The 3B Smart Anatomy course includes **23 digital anatomy lectures**, 117 different virtual anatomy models and 39 anatomy quizzes to test your knowledge
- Bonus: **FREE warranty upgrade from 3 to 5 years** with every product registration

**TIP:** You will also receive access to a **free 3-day trial to all premium features** of the Complete Anatomy app when you sign up for your 3B Smart Anatomy course.

To unlock these benefits, simply scan the label located on your model and register online. All 3B Smart Anatomy features are **completely free of charge** for you. [Click here](#) to learn more.

This replica of the human skull is a fantastic tool for teaching and learning the anatomy of the skull. The muscle origins (red) and insertions (blue) are shown in color on the left side of the skull. Cranial bones and structures are numbered on the right side. Jaw hinges with spring to simulate real movement. This skull model identifies over 140 anatomical details.

- High-quality original casts
- Skull is handmade of hard, unbreakable plastic
- Highly accurate representation of the fissures, foramina, processes, sutures etc.
- Can be disassembled into Skull Cap, Base of Skull and Mandible
- As an option, you can insert a 5-part brain (C 18) into the skull
- Now with magnetic connections

This high quality skull is a great anatomy teaching tool!

3B Smart Anatomy explained in 90 seconds: