



**SEM**

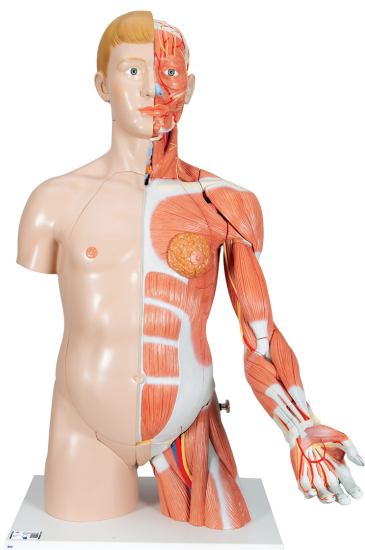
## SEM TRAINERS & SYSTEMS

WHERE TIME MOVES AHEAD TO KEEP PACE WITH KNOWLEDGE

SEM- Scientific Educative Methods in Science, Engineering & Medicine

**Mobile :** +91 88495 63724  
**Mobile 1:** +91 98791 03905

**Email:** sem@semtrainers.com  
**Website:** www.semtrainers.com



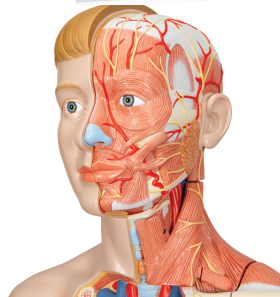
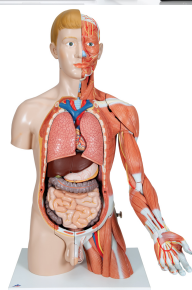
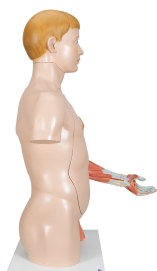
## Life-Size Dual Sex Human Torso Model with Muscle Arm, 33 part - 3B Smart Anatomy

Item No. 1000205 [B42]  
Weight 15.5 kg  
Dimensions 90 cm  
Brand 3B Scientific

[Read More](#)

**SKU:**

**Categories:** Human Torso Models



## Product Description

New **anatomy app** called 3B Smart Anatomy now included for FREE with Life-Size Dual Sex Human Torso Model with Muscle Arm, 33 part.

Every original 3B Scientific anatomy model now includes these additional **FREE features**:

- Free access to the **anatomy course** 3B Smart Anatomy, hosted inside the award-winning Complete Anatomy app by 3D4Medical
- The 3B Smart Anatomy course includes **23 digital anatomy lectures**, 117 different virtual anatomy models and 39 anatomy quizzes to test your knowledge
- Bonus: **FREE warranty upgrade from 3 to 5 years** with every product registration

**TIP:** You will also receive access to a **free 3-day trial to all premium features** of the Complete Anatomy app when you sign up for your 3B Smart Anatomy course.

To unlock these benefits, simply scan the label located on your model and register online. All 3B Smart Anatomy features are **completely free of charge** for you. [Click here](#) to learn more.

A feature of this life-size human torso that is unique worldwide is the removable 6-part muscle arm. The high-quality human torso model therefore fully represents the complete anatomy of the human upper body. The great detail of this deluxe torso makes it especially suitable for the high standards of medical school. The right half of the torso shows the skin, the left half the superficial and deeper muscles with nerves, vessels and bony structures. The versatility of this aesthetically designed human torso model is rounded off by the exact representation of the internal organs. The following parts of the deluxe torso model are removable:

- 2-part head
- Brain half
- Sternocleidomastoideus muscle
- 6-part muscle arm (removable Muscles: deltoid , biceps brachii, triceps brachii, palmaris longus with flexor carpi radialis, brachioradialis with extensor carpi radialist)
- Upper leg stump
- Chest/abdominal wall with detachable mammary gland
- Torso body
- 2 lungs
- 2-part heart
- Liver with gall bladder
- 2-part stomach

- Kidney half
- 4-part intestinal tract
- 3-part female genital insert with fetus
- 4-part male genital insert

This extremely detailed torso is supplied on base board. All the organs in this human torso are hand painted for a quality product. This great human anatomy educational tool and makes learning the location of the human organs easy. It is also supplied with the 3B Torso Guide. Key card in L/G/E/F/S/P/J.

3B Smart Anatomy explained in 90 seconds: