



**SEM**

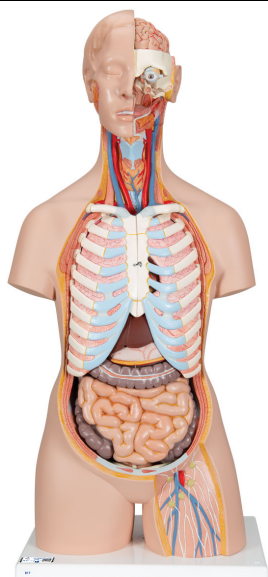
## SEM TRAINERS & SYSTEMS

WHERE TIME MOVES AHEAD TO KEEP PACE WITH KNOWLEDGE

SEM- Scientific Educative Methods in Science, Engineering & Medicine

**Mobile :** +91 88495 63724  
**Mobile 1:** +91 98791 03905

**Email:** sem@semtrainers.com  
**Website:** www.semtrainers.com



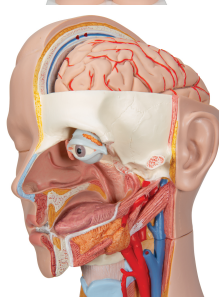
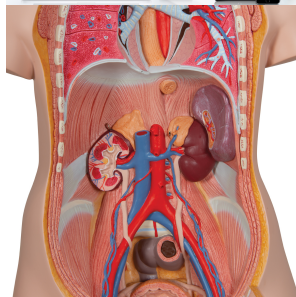
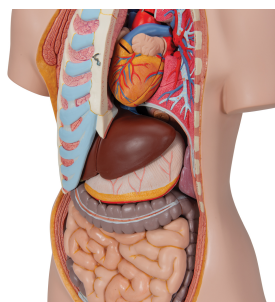
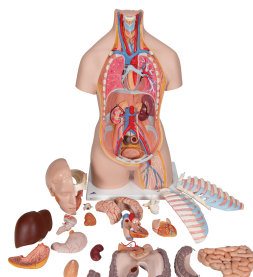
## Classic Unisex Human Torso Model with Open Back, 21 part - 3B Smart Anatomy

Item No. 1000192 [B17]  
Weight 9.593 kg  
Dimensions 87 x 38 x 25 cm  
Brand 3B Scientific

[Read More](#)

**SKU:**

**Categories:** Human Torso Models



## Product Description

New **anatomy app** called 3B Smart Anatomy now included for FREE with Classic Unisex Human Torso Model with Open Back, 21 part.

Every original 3B Scientific anatomy model now includes these additional **FREE features**:

- Free access to the **anatomy course** 3B Smart Anatomy, hosted inside the award-winning Complete Anatomy app by 3D4Medical
- The 3B Smart Anatomy course includes **23 digital anatomy lectures**, 117 different virtual anatomy models and 39 anatomy quizzes to test your knowledge
- Bonus: **FREE warranty upgrade from 3 to 5 years** with every product registration

**TIP:** You will also receive access to a **free 3-day trial to all premium features** of the Complete Anatomy app when you sign up for your 3B Smart Anatomy course.

To unlock these benefits, simply scan the label located on your model and register online. All 3B Smart Anatomy features are **completely free of charge** for you. [Click here](#) to learn more.

This classic torso is hand-painted true to detail and made of high-quality plastic. All 3B torsos are also developed and modeled in Germany. This human torso has the unique feature of an open neck and back section going from the cerebellum to the coccyx. Vertebrae, intervertebral discs, spinal cord, spinal nerves, vertebral arteries, and many other features are represented in detail in this detailed replica of the human anatomy.

The features and removable parts and organs in this unisex torso include:

- 7th thoracic vertebra removable
- 6-part head
- 2-part stomach
- Lungs
- 2-part heart
- Liver/gall Bladder
- 4-part intestine
- Kidney half
- Bladder half
- Open back
- Brain

All the organs in this human torso are hand painted for a quality product. This great human anatomy

educational tool and makes learning the location of the human organs easy. It is also supplied with the 3B Torso Guide.

3B Smart Anatomy explained in 90 seconds: