



**SEM**

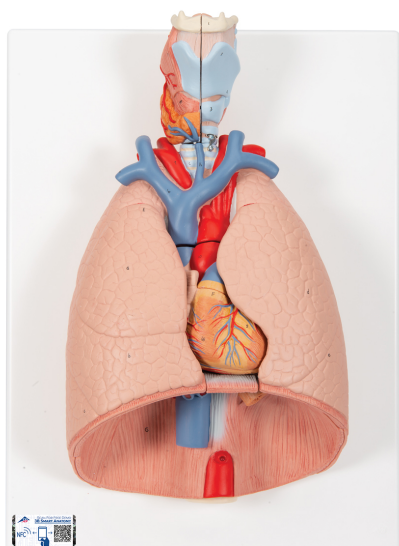
## SEM TRAINERS & SYSTEMS

WHERE TIME MOVES AHEAD TO KEEP PACE WITH KNOWLEDGE

SEM- Scientific Educative Methods in Science, Engineering & Medicine

**Mobile :** +91 88495 63724  
**Mobile 1:** +91 98791 03905

**Email:** sem@semtrainers.com  
**Website:** www.semtrainers.com



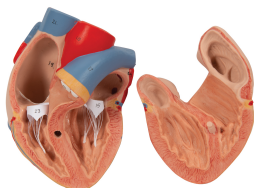
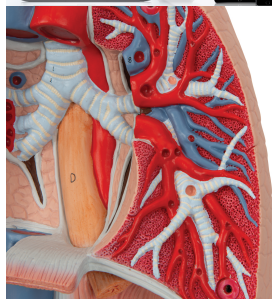
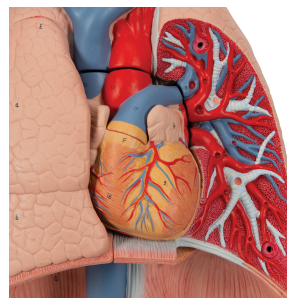
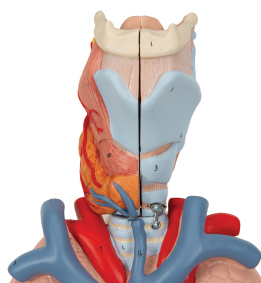
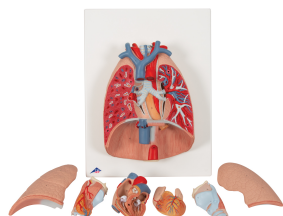
## Human Lung Model with Larynx, 7 part - 3B Smart Anatomy

Item No. 1000270 [G15]  
Weight 1.845 kg  
Dimensions 41 x 31 x 12 cm  
Brand 3B Scientific

[Read More](#)

**SKU:**

**Categories:**Lung Models



## Product Description

New **anatomy app** called 3B Smart Anatomy now included for FREE with Human Lung Model with Larynx, 7 part.

Every original 3B Scientific anatomy model now includes these additional **FREE features**:

- Free access to the **anatomy course** 3B Smart Anatomy, hosted inside the award-winning Complete Anatomy app by 3D4Medical
- The 3B Smart Anatomy course includes **23 digital anatomy lectures**, 117 different virtual anatomy models and 39 anatomy quizzes to test your knowledge
- Bonus: **FREE warranty upgrade from 3 to 5 years** with every product registration

**TIP:** You will also receive access to a **free 3-day trial to all premium features** of the Complete Anatomy app when you sign up for your 3B Smart Anatomy course.

To unlock these benefits, simply scan the label located on your model and register online. All 3B Smart Anatomy features are **completely free of charge** for you. [Click here](#) to learn more.

The lung model with larynx is first class. The high quality lung model contains the following removable parts for added anatomical detail:

- 2-part larynx
- Trachea with bronchial tree
- 2-part heart
- Subclavian artery and vein
- Vena cava
- Aorta
- Pulmonary artery
- Esophagus
- 2-part lung (front halves removable)
- Diaphragm

This is a great model of the anatomy of the lung area. The lung model with larynx is on baseboard for easy display in classroom or doctor's office.

3B Smart Anatomy explained in 90 seconds: