



SEM

SEM TRAINERS & SYSTEMS

WHERE TIME MOVES AHEAD TO KEEP PACE WITH KNOWLEDGE

SEM- Scientific Educative Methods in Science, Engineering & Medicine

Mobile : +91 88495 63724

Mobile 1: +91 98791 03905

Email: sem@semtrainers.com

Website: www.semtrainers.com



Deluxe Flexible Spine Model with Femur Heads, Painted Muscles & Sacral Opening - 3B Smart Anatomy

Item No. 1000127 [A58/7]

Weight 2.399 kg

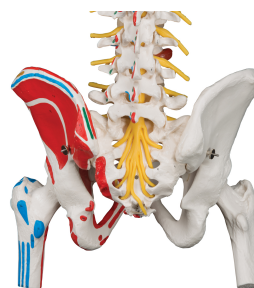
Dimensions 83 cm

Brand 3B Scientific

[Read More](#)

SKU:

Categories: Human Spine Models



Product Description

New **anatomy app** called 3B Smart Anatomy now included for FREE with Deluxe Flexible Spine Model with Femur Heads, Painted Muscles & Sacral Opening.

Every original 3B Scientific anatomy model now includes these additional **FREE features**:

- Free access to the **anatomy course** 3B Smart Anatomy, hosted inside the award-winning Complete Anatomy app by 3D4Medical
- The 3B Smart Anatomy course includes **23 digital anatomy lectures**, 117 different virtual anatomy models and 39 anatomy quizzes to test your knowledge
- Bonus: **FREE warranty upgrade from 3 to 5 years** with every product registration

TIP: You will also receive access to a **free 3-day trial to all premium features** of the Complete Anatomy app when you sign up for your 3B Smart Anatomy course.

To unlock these benefits, simply scan the label located on your model and register online. All 3B Smart Anatomy features are **completely free of charge** for you. [Click here](#) to learn more.

Painted spines add a new dimension to demonstrations about the anatomy of the human spinal column. Muscle origins (red) and insertions (blue) are painted on left innominate, femur and vertebrae of the human spine replica. In addition to all features of the Classic Spine Series our Deluxe Spine Model has a sacral opening and exposed brain stem for advanced anatomical studies. Other features of the spine are:

- Full pelvis and occipital plate
- Fully flexible mounting throughout spine
- L3-L4 disc prolapsed on spinal column
- Spinal nerve exits
- Cervical vertebral artery
- Male pelvis
- Cauda equina
- With movable mounted femur heads

This high quality flexible spine with femur heads and painted muscles is a great teaching tool for the

anatomy of the human spinal column.

Stand is not included with spine, please see [Stand for Spinal Columns and Skeletons](#).
3B Smart Anatomy explained in 90 seconds: