



SEM

SEM TRAINERS & SYSTEMS

WHERE TIME MOVES AHEAD TO KEEP PACE WITH KNOWLEDGE

SEM- Scientific Educative Methods in Science, Engineering & Medicine

Mobile : +91 88495 63724
Mobile 1: +91 98791 03905

Email: sem@semtrainers.com
Website: www.semtrainers.com

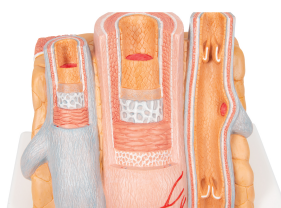
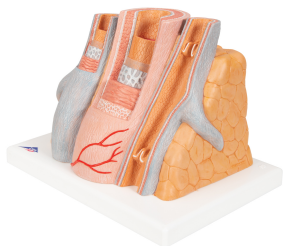
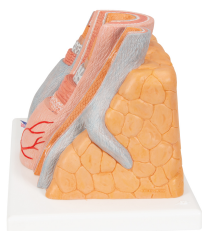
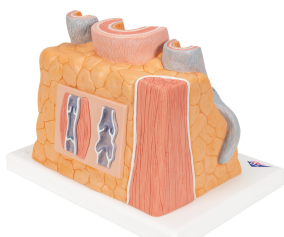
3B MICRO

Item No. 1000279 [G42]
Weight 0.97 kg
Dimensions 26 x 19 x 18.5 cm
Brand 3B Scientific

[Read More](#)

SKU:

Categories:Microanatomy Models



Product Description

New **anatomy app** called 3B Smart Anatomy now included for FREE with 3B MICROanatomy™ Artery & Vein Model, 14 times Enlarged.

Every original 3B Scientific anatomy model now includes these additional **FREE features**:

- Free access to the **anatomy course** 3B Smart Anatomy, hosted inside the award-winning Complete Anatomy app by 3D4Medical
- The 3B Smart Anatomy course includes **23 digital anatomy lectures**, 117 different virtual anatomy models and 39 anatomy quizzes to test your knowledge
- Bonus: **FREE warranty upgrade from 3 to 5 years** with every product registration

TIP: You will also receive access to a **free 3-day trial to all premium features** of the Complete Anatomy app when you sign up for your 3B Smart Anatomy course.

To unlock these benefits, simply scan the label located on your model and register online. All 3B Smart Anatomy features are **completely free of charge** for you. [Click here](#) to learn more.

The artery and vein model shows a medium-sized muscular artery with two adjacent veins from the antebrachial area with adjoining fat tissue and muscle enlarged 14 times. The MICROanatomy™ circulatory system model illustrates the reciprocal anatomical relationship of artery and vein and the basic functional techniques of the venous valves (“valve function” and “muscle pump”). The left vein and the middle artery are fenestrated in the upper anterior segment, revealing the various layers of the wall structure in a cross and longitudinal section and in top view. The right vein is opened throughout in the anterior segment, revealing the orifice of a feeder vein and two venous valves, i.e. “flap valves” formed by a duplication of the tunica intima. On the rear of the artery and vein model, the relief of two veins is shown to illustrate the functional aspect of the venous valves. A great tool for teaching about the human circulatory system. Artery and vein supplied on base.
3B Smart Anatomy explained in 90 seconds: