



SEM

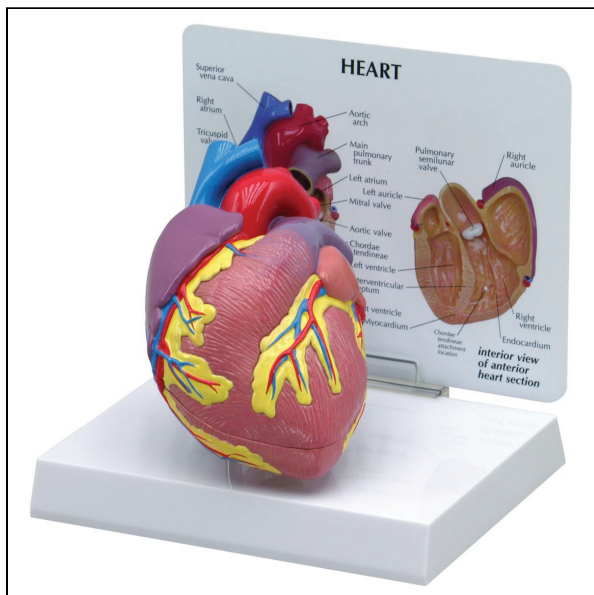
SEM TRAINERS & SYSTEMS

WHERE TIME MOVES AHEAD TO KEEP PACE WITH KNOWLEDGE

SEM- Scientific Educative Methods in Science, Engineering & Medicine

Mobile : +91 88495 63724
Mobile 1: +91 98791 03905

Email: sem@semtrainers.com
Website: www.semtrainers.com



Heart Model

Item No. 1019529
Weight 0.5 kg
MPN: 2500

[Read More](#)

SKU:

Categories: Human Heart Models

Product Description

Full size two-piece normal heart model opens in half to show inner chambers and valves of the heart, as well as aortic arch, superior and inferior vena cava, pulmonary and cardiac veins.

- Model size: 3.75 x 4 x 4.25"
- Base: 6.5 x 5"