



SEM

SEM TRAINERS & SYSTEMS

WHERE TIME MOVES AHEAD TO KEEP PACE WITH KNOWLEDGE

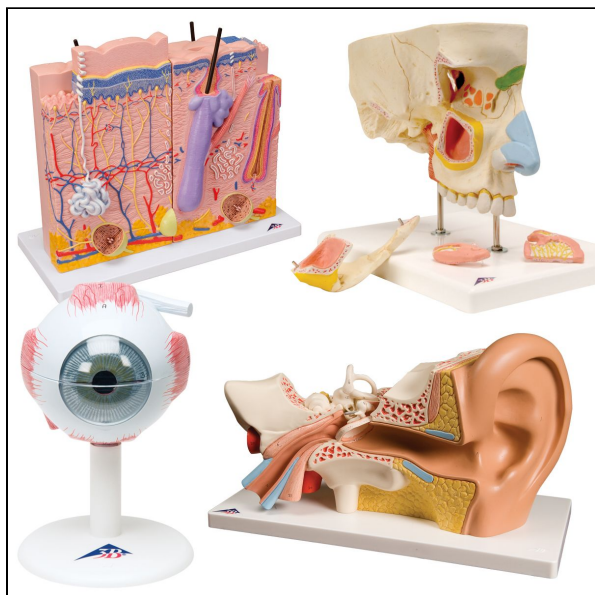
SEM- Scientific Educative Methods in Science, Engineering & Medicine

Mobile : +91 88495 63724

Mobile 1: +91 98791 03905

Email: sem@semtrainers.com

Website: www.semtrainers.com



Anatomy Set Senses

Item No. 8000847

Brand 3B Scientific

[Read More](#)

SKU:

Categories:Anatomy Sets

Product Description

Buy together and save ! **Ear:** This high quality model of the human ear represents outer, middle and inner ear. The detailed human ear model has removable eardrum with hammer, anvil and stirrup as well as 2-part labyrinth with cochlea and auditory/balance nerve. Ear on base for easy display in a classroom or doctor's office. This ear model is a great way to teach and study the anatomy of the human ear! **Eye:** This anatomical human eye model dissects into:

- Both halves of sclera with cornea and eye muscle attachments
- Both halves of the choroid with iris and retina
- Eye lens
- Vitreous humour

Nose: This nose model illustrates the structure of the nose with the paranasal sinuses in the upper right half of a face in 1.5-fold enlargement. **Skin:** The skin is shown 80 times magnified, so even the

smallest structures can be seen in detail. It can be taken apart easily thanks to magnetic connections for better demonstration, and represents the three most important sections of skin: the human scalp, the palm of a hand, and the back of a hand.