



**SEM**

## SEM TRAINERS & SYSTEMS

WHERE TIME MOVES AHEAD TO KEEP PACE WITH KNOWLEDGE

SEM- Scientific Educative Methods in Science, Engineering & Medicine

**Mobile :** +91 88495 63724  
**Mobile 1:** +91 98791 03905

**Email:** sem@semtrainers.com  
**Website:** www.semtrainers.com

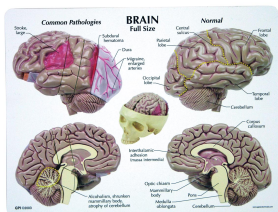
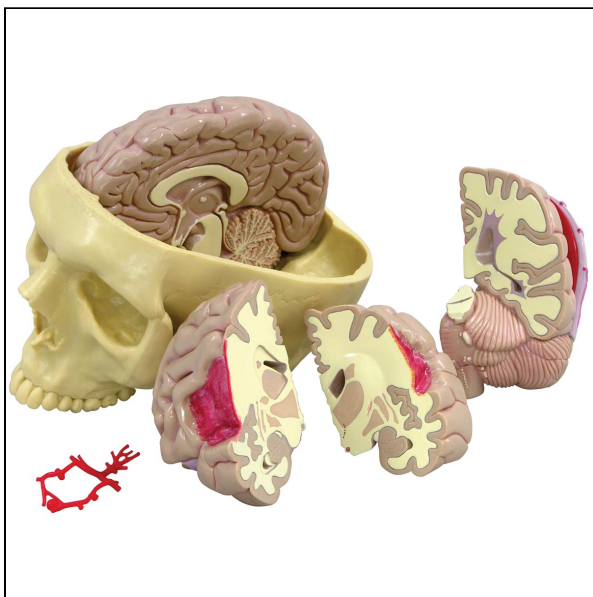
## Brain Model

Item No. 1019542  
Weight 1 kg  
MPN: 2900

[Read More](#)

**SKU:**

**Categories:**Brain Models



## Product Description

Full size segmented brain model features half normal side and three-piece sectioned pathology half, as well as Circle of Willis with aneurysm. The brain, which sits inside a partial skull, features the following pathologies which are also illustrated on a two-sided education card: alcoholism, Alzheimer's, aneurysm, depression related tumor, seizure related tumor, migraine, multiple sclerosis, Parkinson's disease, stroke, and subdural hematoma.

- Model size: 5 x 6.75 x 5"