



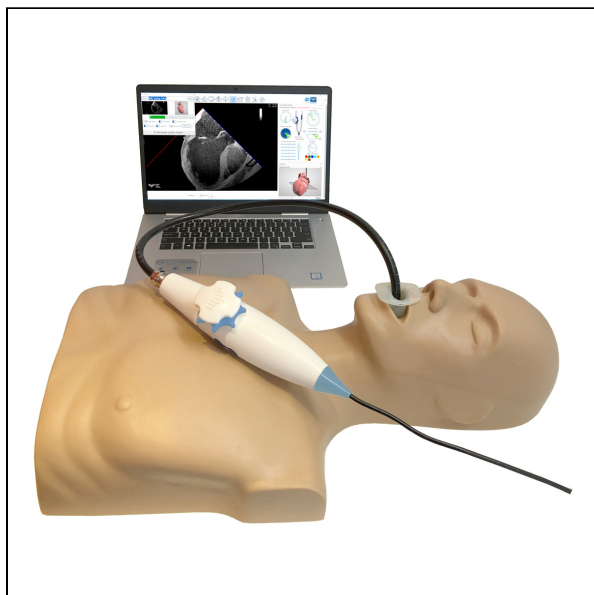
SEM TRAINERS & SYSTEMS

WHERE TIME MOVES AHEAD TO KEEP PACE WITH KNOWLEDGE

SEM- Scientific Educative Methods in Science, Engineering & Medicine

Mobile : +91 88495 63724
Mobile 1: +91 98791 03905

Email: sem@semtrainers.com
Website: www.semtrainers.com



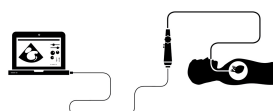
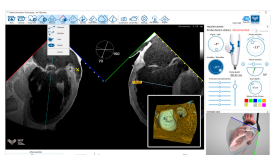
MrTEEmothy® Standard Transesophageal Echocardiography Simulator

Item No. 1022128
Weight 7 kg
Dimensions 60 x 36 x 22 cm
MPN: TEE-MST-01

[Read More](#)

SKU:

Categories: Transesophageal Echocardiography (TEE)



Product Description

The transesophageal echocardiography (TEE) simulator MrTEEmothy® is composed of a phantom and a TEE probe, connected to a dedicated laptop (included) by a USB cable. Advanced software and 3D visualization were specifically developed for the CT scan dataset. The screen interface shows not only 2D cross-sections similar to TEE images, but also the components of the probe motion such as probe

depth, bends, rotation or the angle of the imaging plane.

The device is used with a laptop therefore is fully mobile and can be taken to any teaching location. It is easily connected to an external monitor, which allows for a simultaneous training of many students.

- MrTEEmothy® advantages and innovation were confirmed by a European patent (EP2538398)
- Suitable for training students, residents, cardiologists, anesthetists and intensive care specialists who want to obtain skills without discomfort and the risk of unnecessary harm to patients
- Easily connected to a large monitor for a group training

The advantages of MrTEEmothy®:

- Capability to use the CT data from a range of real patients with numerous pathologies
- Biplane option showing two simultaneous sections steered independently – as in contemporary 3D echo machines
- An advanced game-like module can be used to practice and test the ability to obtain the standard TEE views recommended by the imaging guidelines
- Anatomical differences from patient to patient allow the training of individual cases
- Realistic feeling of the probe operation in a patient thanks to the unique software based on a three-dimensional dataset obtained from CT

Training benefits:

- Learning the TEE normal and pathological anatomy
- Pointing anatomical details with color markers positioned in three-dimensional space
- Practicing optimal acquisition and recording of standard TEE views
- Interpretation of individual pathology
- Performing measurements

	MrTEEmothy® Standard	MrTEEmothy® Expert
Article number	1022128	1022130
Hardware		
MrTEEmothy® torso	YES	YES
TEE simulation USB probe (accuracy of $\pm 0.5\text{mm}$ in depth measurement and $\pm 1^\circ$ in plane rotation angle)	YES	YES
DELL laptop with a pre-installed software	YES	YES

USB ECHO panel	–	YES
Transportation case	YES	YES
Warranty	1 year for hardware	2 years for hardware & software
Software		
2D and cross-plane imaging	YES	YES
Measurements package	YES	YES
Probe position indicators	YES	YES
Cartoon 3D model with probe and plane orientation	YES	YES
User color markers	YES	YES
Trainer with examination module	–	YES
Color flow module	–	YES
3D TEE viewer simulator	–	YES
Cases		
One normal and one pathology case	YES	YES
Additional 4 pathology cases	–	YES