



SEM

SEM TRAINERS & SYSTEMS

WHERE TIME MOVES AHEAD TO KEEP PACE WITH KNOWLEDGE

SEM- Scientific Educative Methods in Science, Engineering & Medicine

Mobile : +91 88495 63724
Mobile 1: +91 98791 03905

Email: sem@semtrainers.com
Website: www.semtrainers.com



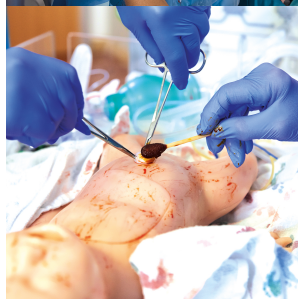
Advanced Lucy - Emotionally Engaging Birthing Simulation

Item No. 1021723
Weight 43.29 kg
Dimensions 167 cm
MPN: LF00040

[Read More](#)

SKU:

Categories:Gynecology



Product Description

The new family of Life/form® Lucy Birthing Simulators is a comprehensive birthing simulation solution covering obstetrical events from prenatal to postnatal delivery scenarios with a new level of physical realism for an emotionally engaging learning experience.

Anatomically accurate, Lucy birthing simulators allow students to experience realistic normal and abnormal deliveries. Lucy comes in three different versions to meet your individual clinical and economic training requirements: Basic, Complete, and Advanced Lucy.

Advanced Lucy Maternal and Neonatal Birthing Simulator is a birthing simulation system designed to present the complex needs of a growing demographic with unique health and physical challenges. Creating a new level of physical realism will allow a near-human connection and enhance the immersion in obstetrical training. Lucy is designed to provide a comprehensive and economical birthing experience from prenatal to postnatal delivery scenarios. This anatomically accurate obstetrical and birthing simulator allows students to experience realistic normal and abnormal deliveries. The quality and simple design make Lucy easy to use and care for while teaching patient techniques for all levels of educator training.

Apart from practicing many birthing scenarios, Advanced Lucy allows learners to benefit from features such as blood pressure measurement, intravenous injection, a complete set of clots and hemorrhages or blood clotting. Advanced Lucy comes with two babies: a Micro-Preemie Simulator and a Newborn Nursing and ALS Simulator. Two carrying bags are provided.

General Features:

- Lightweight, full-body female - 66" (167 cm) long, 35-lb. (16 kg) weight
- Simple to transport in pre-hospital scenario training
- Superior range of motion with fully articulated joints
- Bony landmarks including ischial spines
- Change appearance quickly with multiple hair and eye color combinations

Functions

- Airway management - intubation and ventilation with chest rise
- Amniotic sac
- Articulating arms and legs
- Articulating baby - 18" (45 cm) long, 22-lb. (1 kg) weight
- Birthing positions - hands and knees, lateral, supine

- Breech deliveries - complete, incomplete, Footling, and Frank
- Cervical dilation - 6 stages
- Cesarean section delivery
- CPR
- Deliveries - vaginal, cesarean, forceps-assisted, and vacuum-assisted
- Episiotomy repair
- External version
- Fetal palpation - abdominal and Leopold's maneuvers
- Fetal suction
- Fundal massage
- Intramuscular injection sites (maternal only), right deltoid, left deltoid, right thigh
- Manual birthing maneuver - instructor/student-controlled fetal descent
- Membrane rupture
- Oral and nasal care - lavage, gavage, suctioning
- Patient positioning and transfer techniques
- Placenta previa
- Postpartum care
- Postpartum hemorrhage
- Scale electrode placement
- Shoulder dystocia maneuvers - McRobert's, Suprapubic Pressure, Rubin's I and II, Wood's Screw, Reverse Wood's Screw, Posterior Arm, Gaskin
- Umbilical cord clamping and cutting
- Umbilical cord prolapse

Delivery content

- Abdominal pad
- Abdominal skin, 2 - 1 normal and 1 cesarean
- Amniotic sac, 50
- Articulating baby
- Cervices, 6 - stages 1-6
- Chest skin
- Clotting blood
- CPR chest
- Eyes, 3 sets - brown, blue, and green
- Fundus
- Hospital gown
- Inflation tubing with squeeze bulb
- Large soft rolling carry case
- Blood Pressure Arm (left, see description below)

- Complete Set of Clots and Hemorrhages, 5 - 1 each of small blood clot, medium blood clot, large blood clot, perineal hemorrhage, and hemorrhage blood pool
- IV Arm (right, see description below)
- Micro-Preemie Simulator (see description below)
- Newborn Nursing Skills and ALS Simulator - full-term newborn
- Lubricating jelly
- Lung bag
- Pelvic block
- Perineal skin, 3 - prenatal, birthing, and episiotomy
- Perineal skin stabilizer pad
- Placenta
- Positioning bag
- Small soft carry case
- Umbilical clamp
- Umbilical cords, 4 - 1 long and 3 short
- Wigs, 3 - black, blond, and brown

Blood Pressure Arm (left)

- Auscultation blood pressure training
- Five Korotkoff sounds
- Variable systolic and diastolic levels, pulse rate, volume, and auscultatory gap
- Palpable radial pulse
- No special stethoscope necessary – use your own equipment
- Hinged at the shoulder for easy access and cuff application practice

IV Arm (right)

- Shoulder intramuscular injection site
- Realistic flashback confirms proper needle placement
- Replaceable skin and veins that roll when palpated
- Arm rotates at the bicep for pronation and supination range of motion and venous access
- Accessible veins at the antecubital fossa, along the forearm, and at the back of the hand

Micro-Preemie Simulator

- Simulates a 25-week neonate
- 2 Birth defects
- Bilateral and unilateral chest rise
- Cannulating umbilicus
- Chest tube placement

- CPR
- GI
- Intubation
- IV access sites
- Removable ostomy site
- Replaceable airway

Newborn Nursing Skills and ALS Simulator

- Full-term newborn, measuring 19" (48 cm) from heel to crown, approximately 7½ lbs. (3.5 kg), with a 14½" (36 cm) head circumference
- Airway, breathing, & ventilation
 - Auscultation of lung sounds during ventilation
 - Bilateral lung expansion or collapsed lung
 - ET Tube Insertion, size 3.5 with a #1 Miller blade
 - Practice chest tube insertion and care of chest tube site
 - Sellick Maneuver
 - BVM
- Birth anomalies
 - Neural tube defect
 - Omphalocele
- CPR
 - Anatomical landmarks
 - Realistic chest compressions
- Umbilicus
 - Patent umbilicus with arteries and vein sites for cannulation or infusion
 - Umbilical reservoir will hold 5 ml
- Venous Access
 - - Access in the right hand and foot
 - - Achieve realistic flashback with pressurized system
- Heel stick

Complete Set of Clots and Hemorrhages

- Durable, reusable moulage for multiple birthing scenarios
- Complete set with various sizes and shapes

- Use alone or add simulated blood or other moulage makeup to enhance the simulation

True Clot, Clotting Blood Product

- Highly realistic simulated clotting blood for use in hemorrhage control training
- Accurately matches the color, opacity, and flow characteristics of human blood

Soft Carry Bag System (large and small)

- Light, durable soft carry bag
- Multiple pockets
- Wheeled on one side with a telescoping or standard handle on the other side