



**SEM**

## SEM TRAINERS & SYSTEMS

WHERE TIME MOVES AHEAD TO KEEP PACE WITH KNOWLEDGE

SEM- Scientific Educative Methods in Science, Engineering & Medicine

**Mobile :** +91 88495 63724  
**Mobile 1:** +91 98791 03905

**Email:** sem@semtrainers.com  
**Website:** www.semtrainers.com



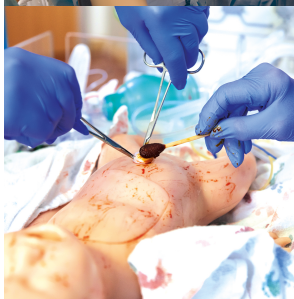
## Basic Lucy - Emotionally Engaging Birthing Simulation

Item No. 1021721  
Weight 16 kg  
Dimensions 167 cm  
MPN: LF00042

[Read More](#)

**SKU:**

**Categories:**Gynecology



## Product Description

The new family of Life/form® Lucy Birthing Simulators is a comprehensive birthing simulation solution covering obstetrical events from prenatal to postnatal delivery scenarios with a new level of physical realism for an emotionally engaging learning experience.

Anatomically accurate, Lucy birthing simulators allow students to experience realistic normal and abnormal deliveries. Lucy comes in three different versions to meet your individual clinical and economic training requirements: Basic, Complete, and Advanced Lucy.

Basic Lucy Maternal and Neonatal Birthing Simulator is a birthing simulation system designed to present the complex needs of a growing demographic with unique health and physical challenges. Creating a new level of physical realism will allow a near-human connection and enhance the immersion in obstetrical training. Lucy is designed to provide a comprehensive and economical birthing experience from prenatal to postnatal delivery scenarios. This anatomically accurate obstetrical and birthing simulator allows students to experience realistic normal and abnormal deliveries. The quality and simple design make Lucy easy to use and care for while teaching patient techniques for all levels of educator training.

Basic Lucy comes with an articulating baby. A soft carrying bag is provided.

### General Features

- Lightweight, full-body female - 66" (167 cm) long, 35-lb. (16 kg) weight
- Simple to transport in pre-hospital scenario training
- Superior range of motion with fully articulated joints
- Bony landmarks including ischial spines
- Change appearance quickly with multiple hair and eye color combinations

### Functions

- Airway management - intubation and ventilation with chest rise
- Amniotic sac
- Articulating arms and legs
- Articulating baby - 18" (45 cm) long, 22-lb. (1 kg) weight
- Birthing positions - hands and knees, lateral, supine
- Breech deliveries - complete, incomplete, Footling, and Frank
- Cervical dilation - 6 stages
- Cesarean section delivery
- CPR

- Deliveries - vaginal, cesarean, forceps-assisted, and vacuum-assisted
- Episiotomy repair
- External version
- Fetal palpation - abdominal and Leopold's maneuvers
- Fetal suction
- Fundal massage
- Intramuscular injection sites (maternal only), right deltoid, left deltoid, right thigh
- Manual birthing maneuver - instructor/student-controlled fetal descent
- Membrane rupture
- Oral and nasal care - lavage, gavage, suctioning
- Patient positioning and transfer techniques
- Placenta previa
- Postpartum care
- Postpartum hemorrhage
- Scale electrode placement
- Shoulder dystocia maneuvers - McRobert's, Suprapubic Pressure, Rubin's I and II, Wood's Screw, Reverse Wood's Screw, Posterior Arm, Gaskin
- Umbilical cord clamping and cutting
- Umbilical cord prolapse

#### Delivery content

- Abdominal pad
- Abdominal skin, 2 - 1 normal and 1 cesarean
- Amniotic sac, 50
- Articulating baby
- Cervices, 6 - stages 1-6
- Chest skin
- CPR chest
- Eyes, 3 sets - brown, blue, and green
- Fundus
- Hospital gown
- Inflation tubing with squeeze bulb
- Lubricating jelly
- Lung bag
- Pelvic block
- Perineal skin, 3 - prenatal, birthing, and episiotomy
- Perineal skin stabilizer pad
- Placenta
- Positioning bag
- Umbilical clamp

- Umbilical cords, 4 - 1 long and 3 short
- Wigs, 3 - black, blond, and brown